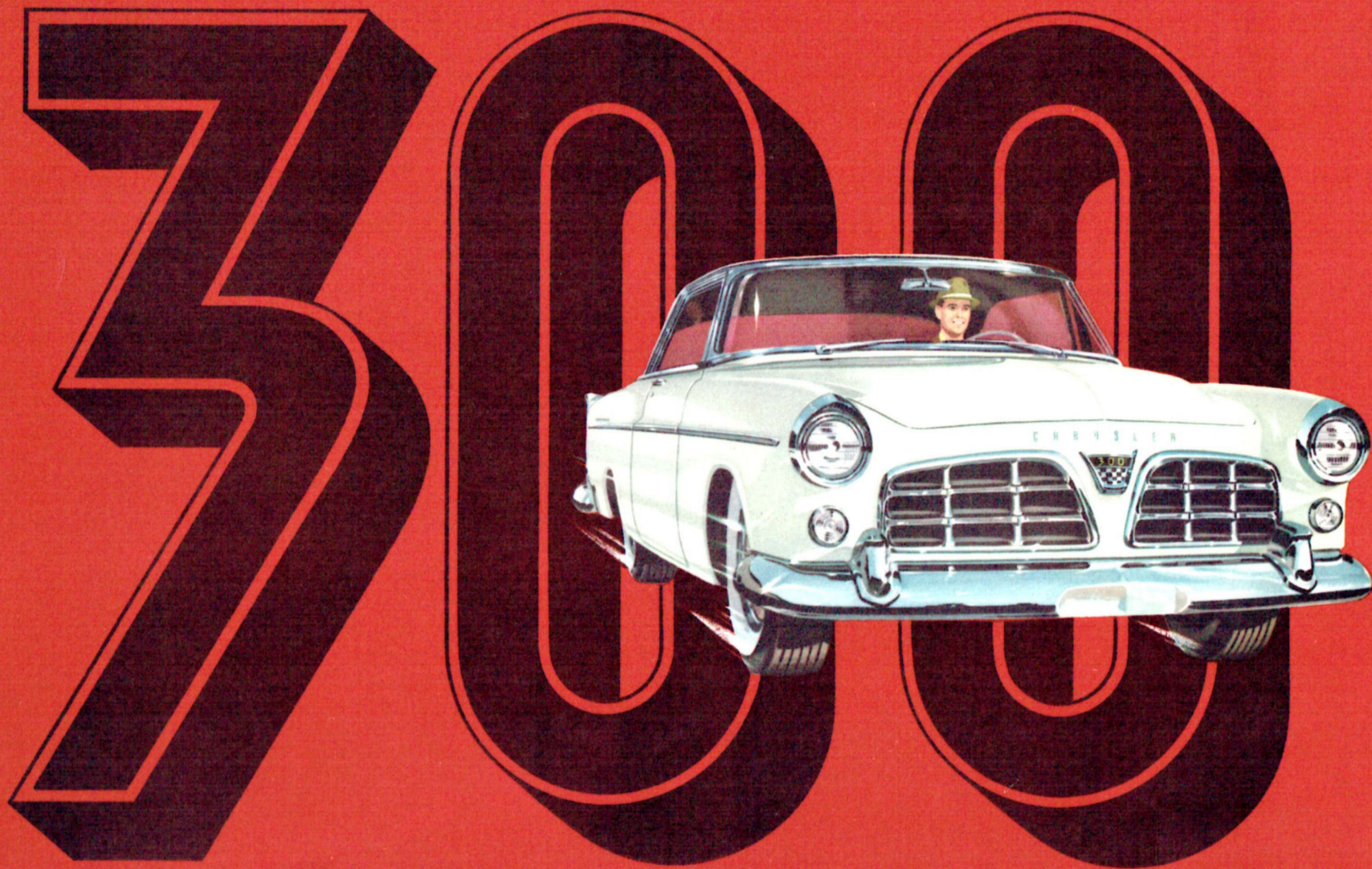
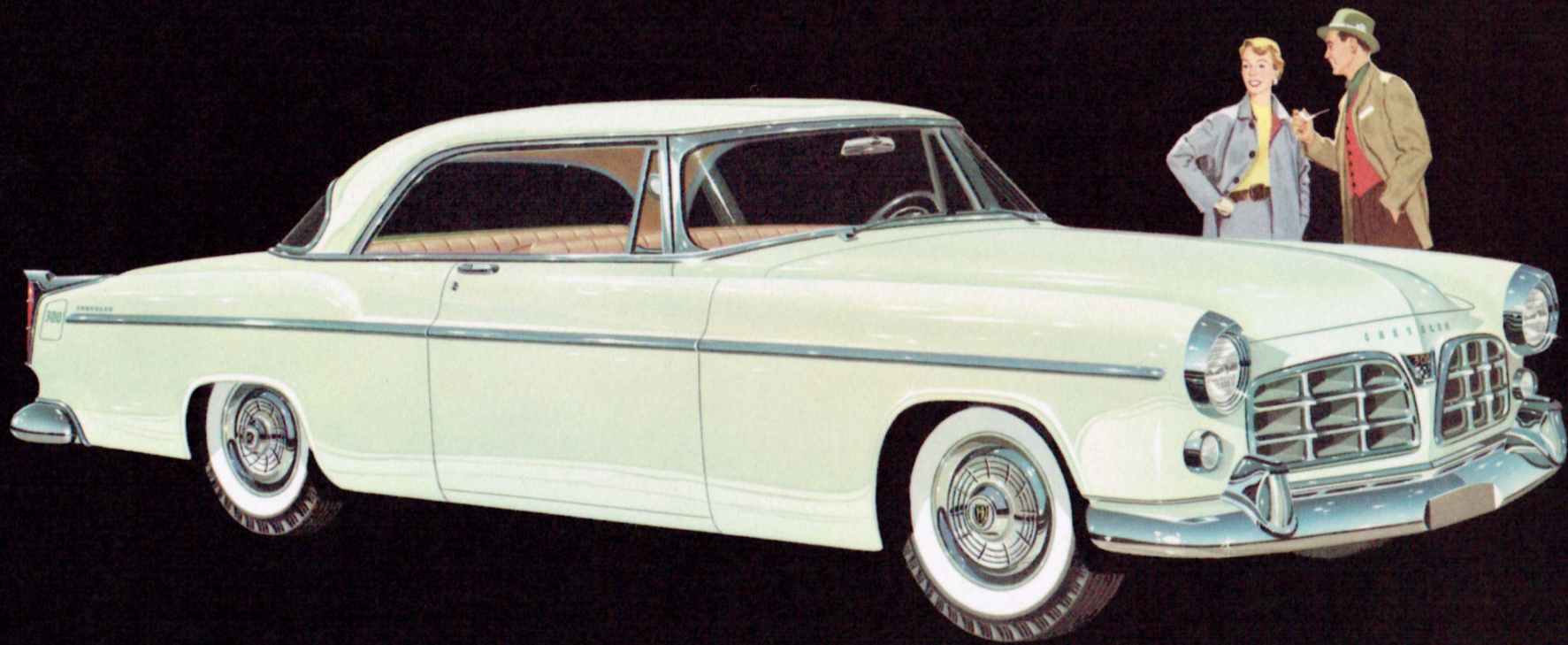


THE
CHRYSLER





● *Smartly, superbly different and distinctive*

THE CHRYSLER 300

America's Greatest Performing Motor Car

The Chrysler 300 — a platinum colored beauty of class and distinction — with the speed of the wind — the maneuverability of a polo pony — the power to pass on the road *safely* — and an all-around performance quite unlike anything you will find available either here in America or abroad.

The Chrysler 300 was designed and built *by popular demand* for the thousands of automobile enthusiasts and sportsmen who want a car with the famous modified Chrysler FirePower engine that established new records at Le Mans, Watkins Glen, and other famous road races — a car with a contemporary look of style and smartness — a car with the feel, the response, and the road-hugging look of European sports cars — and one that would reflect the discriminating good taste of the owner.

The 300 horsepower modified FirePower V-8 Engine has the power that confidently assures boundless pep and performance. The modifications on this great engine include two four-barrel carburetors, a full-race camshaft and rocker-arm valve adjustment.

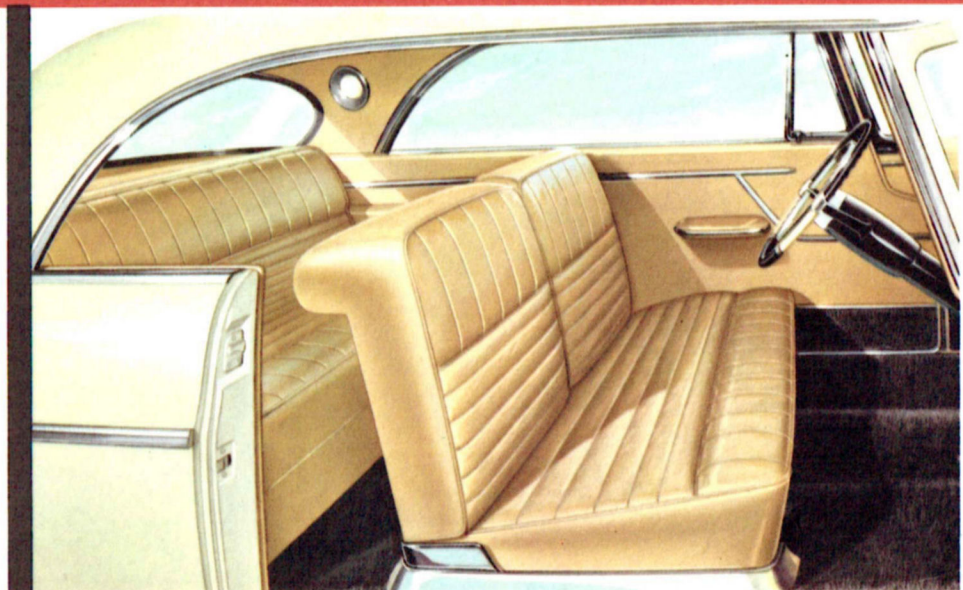
The Chrysler 300 has a special spring suspension that gives a controlled ride, and heavy duty shock absorbers that prevent bottoming on rough roads. There is also a dual exhaust system, power brakes, PowerFlite fully automatic transmission, and Chrysler center-arm steering mechanism. Detailed specifications and equipment are shown on the back page.

The Chrysler 300 will be built in limited quantities only and orders will be filled as they are received.

CHRYSLER

300

Tastefully styled Natural Cowhide lends special distinction to the interior of the CHRYSLER "300" . . . a tailoring in genuine leather complementing the car's exterior style and smartness, yet capable of taking the hardest wear. Exterior colors are available in Platinum, Tango Red, or Black.



CHRYSLER 300 SPECIFICATIONS



Body Style: Sports Coupe.

Engine: FirePower 90° V-8, hemispherical combustion chamber, overhead laterally inclined valves. Bore, 3.81; Stroke, 3.63; Piston Displacement, 331.1 cu. in.; Compression Ratio, 8.5 to 1; Brake Horsepower, 300 hp at 5200 rpm. Aluminum alloy pistons. Three piston rings (top ring chrome plated). Copper-lead crankshaft and connecting rod bearings. Long duration, high output intake and exhaust cams. Tappets—special cast iron cam followers with lash adjustment on valve rocker arm.

Fuel and Lubricating System: Two Down-draft Four Barrel Carburetors. Integral automatic choke velocity controlled secondary draft system with automatic lockout of secondary system during choking and warm-up period. Dual Air Cleaners; mechanical fuel pump; full pressure lubrication; Full-Flow Oil Filter; Oilite Fuel Filter in gas tank. Gas capacity, 20 gallons. Crankcase capacity, 5 quarts.

Cooling System: Thermostatic by-pass temperature control. 4 blade fan. Full length water jacket cooling. Capacity, 25 quarts.

Electrical System: 45 amp Generator. 19 plate, 135 amp hr., 6 volt Battery. 14 mm "Long Reach" Resistor Spark Plugs. Sealed-beam Bulls-Eye Headlamps; Parking Lights; Luggage Compartment Light; Glove Box Light; Directional Signals; Handbrake Flasher Warning Signal; Map Light; Electric Windshield Wipers.

Chassis: Heavy Duty front and rear springs with lowered car height. Increased resistance to deflection and lower center of gravity. Four rubber limit bumpers; rubber-bushed torsion rod stabilizer.

Steering: Manual; symmetrical Idler Arm Steering Linkage, with Three-tooth Roller Steering Gear. Chrysler Full-Time Power Steering available.

Transmission: PowerFlite fully automatic Torque Converter. Upshift automatic from 17 to 65 mph; Downshift automatic at 11 mph; Instantaneous Passing Gear.

Suspension: Front— independent lateral control coil springs with Heavy Duty Shock Absorbers mounted in center. Rear— parallel longitudinal leaf semi-elliptic springs with straddle mounted Heavy Duty Shock Absorbers.

Brakes: Safe-Guard Hydraulic, internal expanding, with cycle-bonded brake lining. Power Brakes standard equipment. Chrysler Easi-Lock independent Parking Brake, with brake handle on panel. Red Flasher Warning Signal.

Tires: Special Safety Super-Cushion Nylon Tubeless White Sidewall Tires; 8.00 x 15, 4 ply. Tread— Front, 60.2 in.; Rear, 58.6 in.

Rear Axle Ratio: 3.36. Optional— 3.54, 3.73, 3.91, or 4.1.

Dimensions: Wheelbase, 126 in. Over-all length, 218.8 in. Width, 79.1 in. Height, 58.6 in.

Standard Equipment: Windshield Washer; Custom Steering Wheel; Dual Exhaust Pipe Deflectors; Safety Cushion Dash Panel.

Optional Equipment at extra cost: Power Steering; 4-Way Electric Front Seat Adjustment; Electric Window Lifts (front doors and rear quarter windows); Radio and Antenna; Heater; Solex Glass; Electric Clock; Wire Wheels (limited quantity) with Tires and Tubes. NOT AVAILABLE— Air-Conditioning; Back-up Lights; Outside Rear-view Mirrors.

All specifications and prices subject to change without notice.

CS-339 Litho in U.S.A. 2-55



CHRYSLER DIVISION • DETROIT