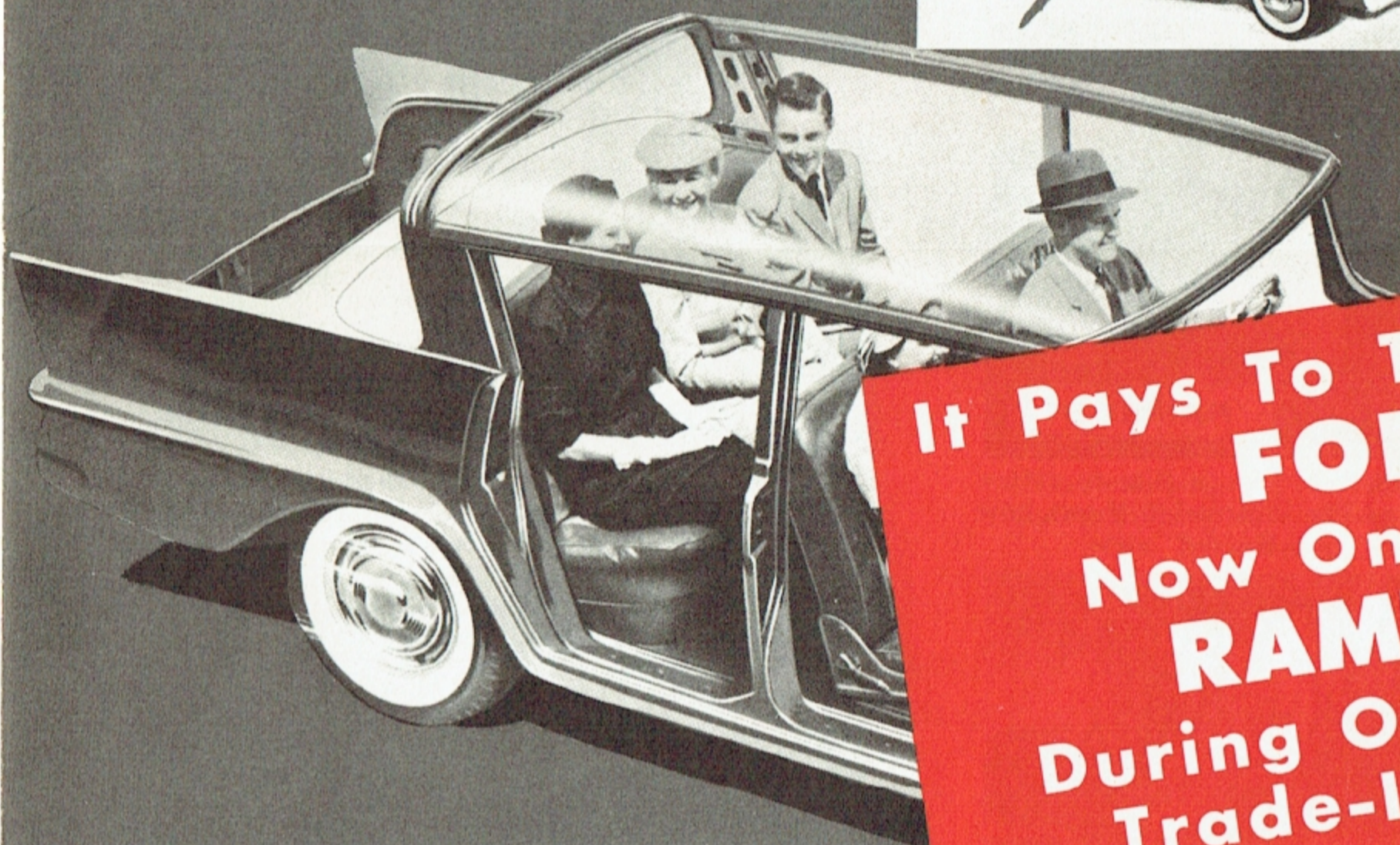


**1958**

# X-RAY

COMPARES THE LOW-PRICED CARS



It Pays To Trade Your  
**FORD**

Now On A New  
**RAMBLER**

During Our Special  
Trade-In Week!

Read Why.....

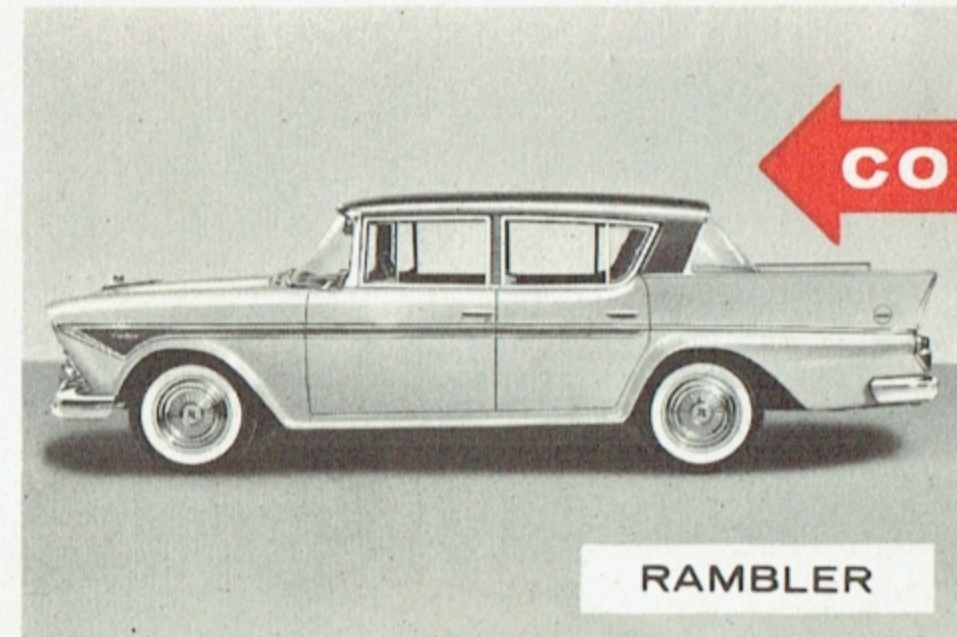
**RAMBLER**

## OFFICIAL FACTS\*

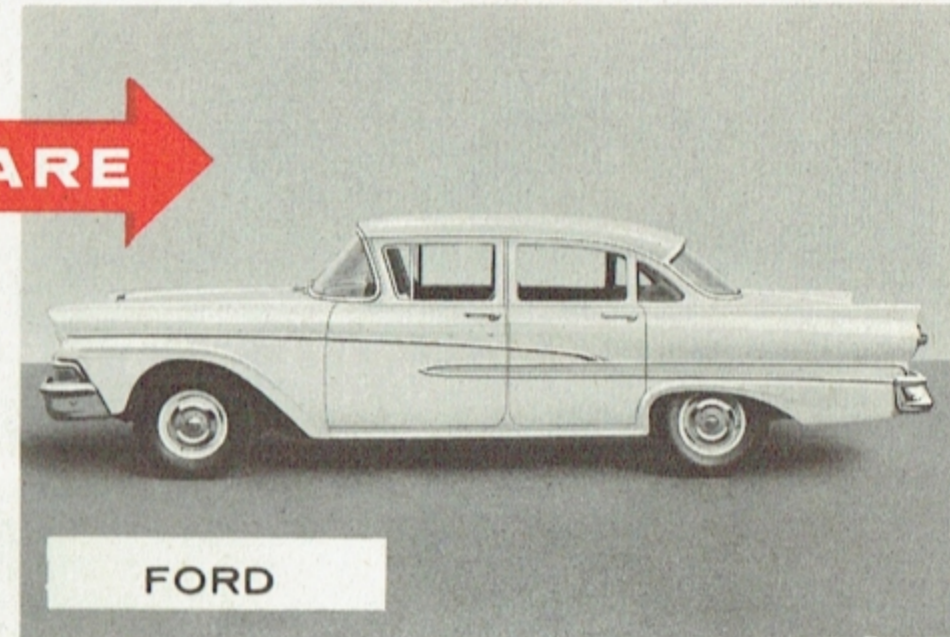
- BASIC DIFFERENCES
- PERFORMANCE-ROOM
- HANDLING EASE
- ECONOMY-SAFETY
- COMFORT-STYLE
- TRADE-IN VALUE

\*From official literature of car makers and from automotive engineering publications.

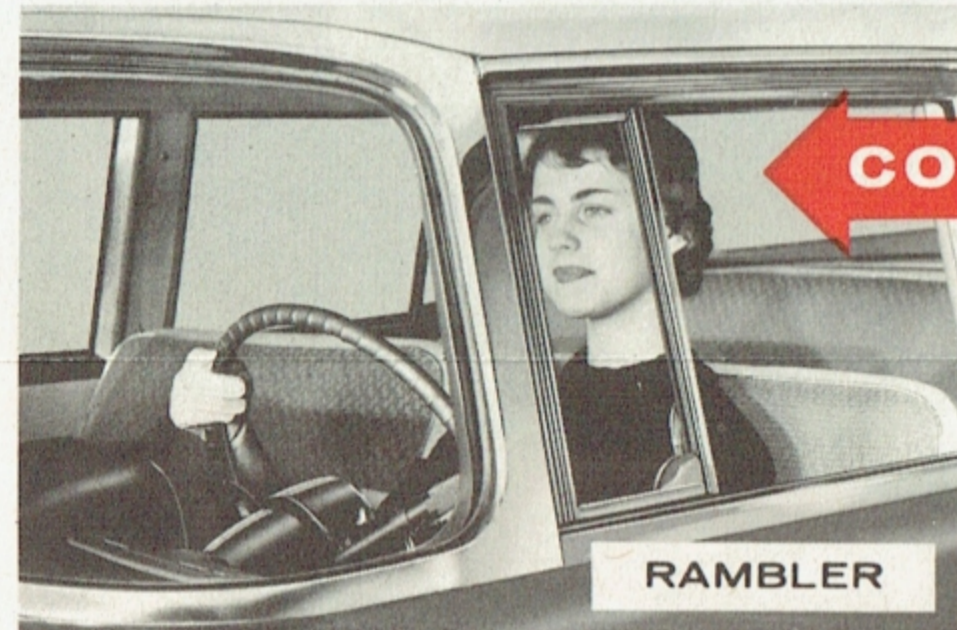
# The 1958 Automotive X-Ray Compares All Low-Price Cars Here Are A Few Of The Revealing Comparisons With Ford—



Advanced-style chrome mouldings are horizontal and dynamic in treatment. The over-all effect is neat and trim.



A lack of smoothness characterizes the 1958 treatment of side lines. The styling lacks the simplicity and flow of past models.



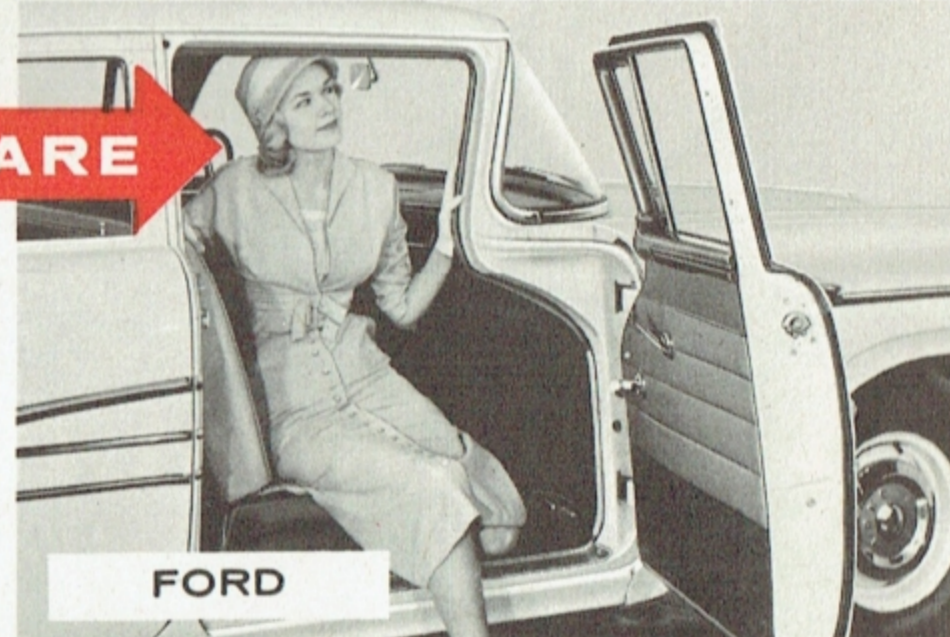
Rambler's vertical windshield post is slim to assure maximum driver vision. The illustration shows how the driver enjoys an unobstructed view.



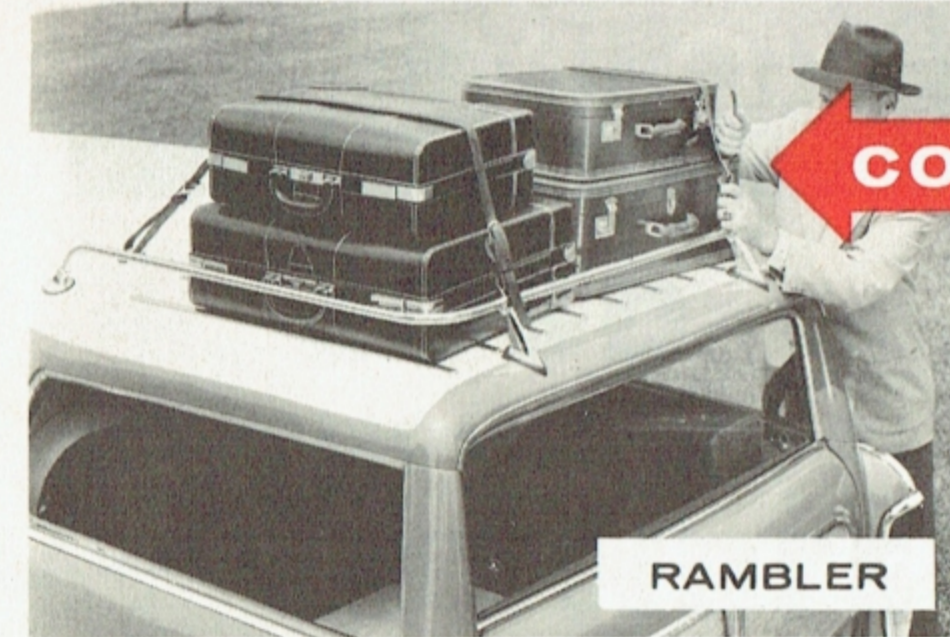
Ford's thick sweptback windshield post lessens visibility . . . creates a driving hazard. Notice how the post is in direct line of driver's view to the side.



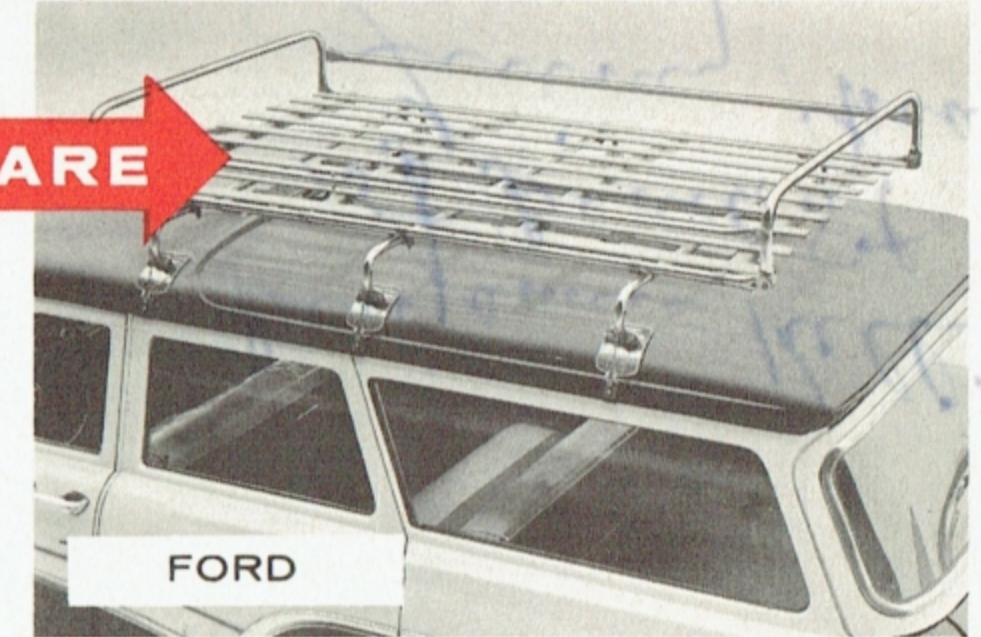
Rambler beats the low price field for comfortable entrance room. Front and rear, Rambler doors are higher and wider than the average of the field.



Impractical design cheats you out of easy entrance. Narrow, low jig-saw front and rear doors call for an acrobat to get in and out with any degree of ease.



Even the lowest-priced Rambler Super Cross Country gives you the "Travel Rack" at no extra cost.



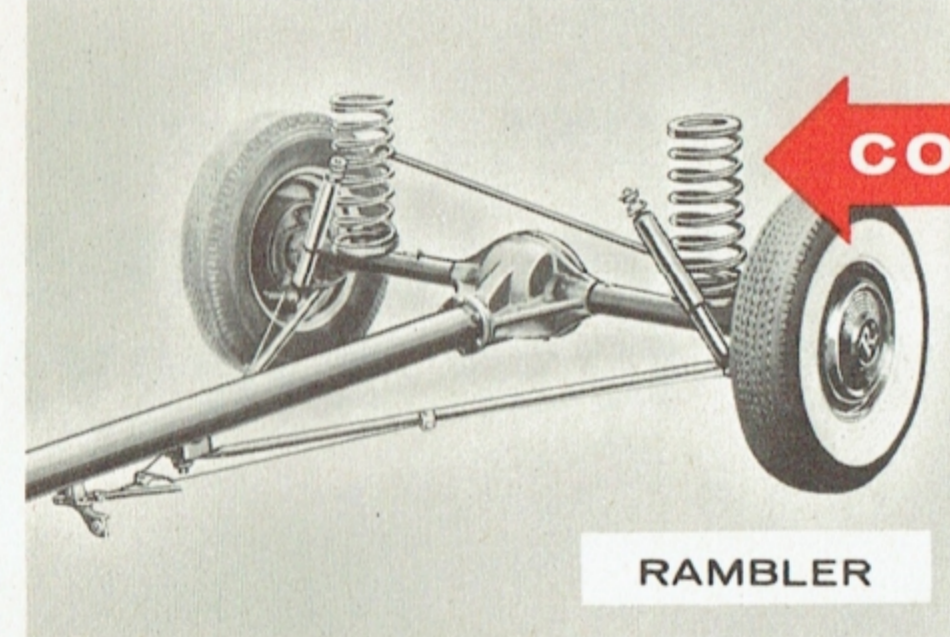
Other station wagons, except top-price models, have only "accessory house" luggage racks.



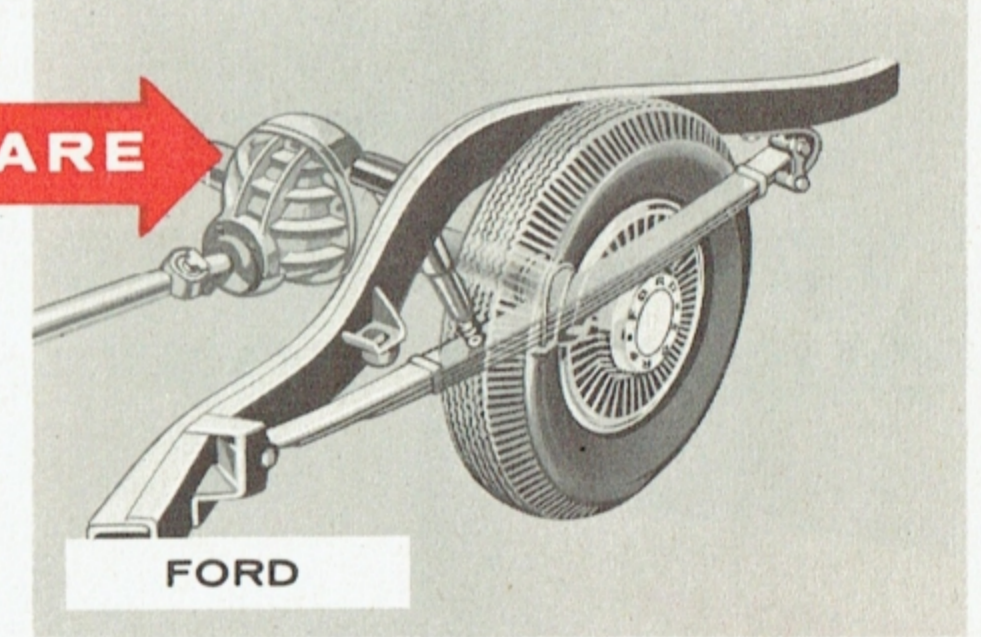
Roll down rear window makes loading a cinch. Can be key-locked in 3 positions.



"Head-cracking, stick-out" upper tail-gates make loading difficult. If left open, they rattle, are unsafe.



Deep coil springs on all four wheels of Rambler never wear out or stiffen up. No lubrication or spring servicing is ever needed.



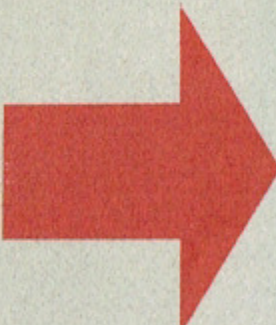
Ordinary leaf springs used on most low-priced cars for rear suspension do not offer as smooth a ride on rough roads, need frequent servicing.



Get More Car For Your Money — See **FREE** Offer On Reverse Side . . .



**FORD**  
Superiority Over  
**Proves RAMBLER**



*Point-By-Point the **X-RAY** Proves  
RAMBLER Superiority Over FORD  
and All Other Low-Price Cars...*

**BEFORE YOU BUY ANY NEW CAR  
YOU OWE IT TO YOURSELF TO GET  
YOUR FREE COPY OF THE 1958 X-RAY!**

**SEE YOUR  
RAMBLER  
DEALER  
TODAY**  
*No Obligation!*