



ECLIPSE COUPE



ECLIPSE SPYDER



LANCER



MIRAGE COUPE



GALANT



MONTERO SPORT



MONTERO

**mitsubishicars.com** We are Mitsubishi. We build quality cars. Yet we also offer something more. Because while a car should answer your needs, it should also stir your emotions. Like it or not, cars are a window through which the world views us. Through that window we can appear dull and lifeless—sensible to the point of boring. Or we can show the world that our hearts beat strong, and our minds are quick. Mitsubishi takes pride in building cars that ignite the vital spark which often lies sleeping just beneath the surface in each of us. Cars that challenge us to **wake up and drive.**™

**mitsubishicars.com/heritage** For over forty years, we've put thoughtful engineering to the test on the international rally circuit. In addition to the obvious thrill of winning, competing against our peers in motor sports helps us develop and refine new ideas. Ideas that find their way to your new car. And inevitably, your heart.



1-888-MITSU2002



**ignore the traffic.**

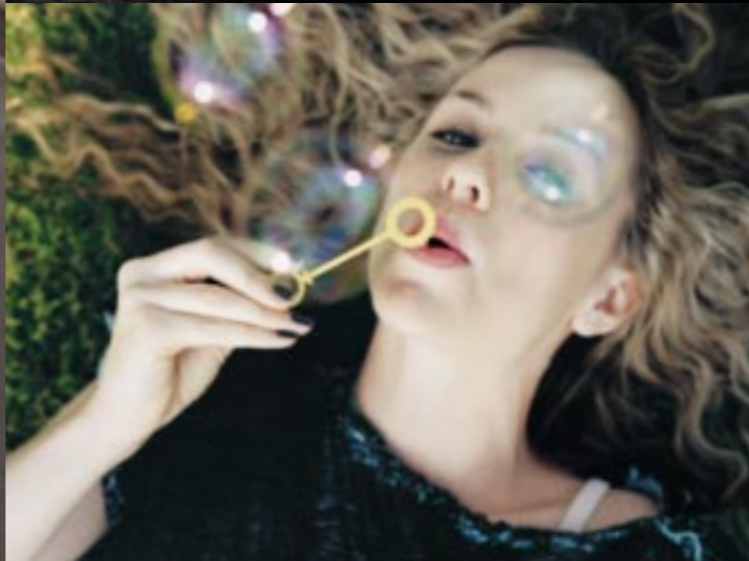
**ignore the billboards.**

**ignore the eyeballing from the next lane.**

**and instead, feel the rush.**



**It doesn't work with every car. We hardly need to tell you that. But drive something with a passionate heart, athletic style, a tendency to pamper, and a healthy disrespect for hills and slow-moving motor homes, and you get to feel a thing or two. Welcome to the 2002 Diamante.**



[mitsubishicars.com/styling](http://mitsubishicars.com/styling)

Maybe you're not comfortable being the center of attention. Don't worry. It'll grow on you. Because while some luxury cars seem to stomp up and down like spoiled children, crying, "Look at me, I'm special!" the Diamante achieves this in a much quieter, more dignified way.

Without boasting or bragging, the Diamante cuts an impressive swath wherever it travels. Its subtle curves and sharp lines give it a distinctiveness that feels self-assured, solid. And we've tailored a few details this year to give it an even more memorable stance. The front, for instance, is newly sculpted for more of an aggressive attitude. The taillights have been redesigned. The rear decklid bears the characteristic Mitsubishi shape – not only striking in its simplicity, but also aerodynamically smart.

come to  
**think of it,**  
maybe the entire world  
does revolve around you.

no self-respecting bird

would dare  
**tarnish**  
**it.**





Places to go, people to see. And who are we to slow you down? Diamante is aerodynamically designed for exceptional stability at highway speeds. In fact, it possesses the lowest drag coefficient (0.28) of any Mitsubishi sold in the U.S. — making it not only one of the best in its class, but more fuel efficient as well.



#### [mitsubishicars.com/performance](http://mitsubishicars.com/performance)

Just punch the Diamante's 3.5-liter, 24-valve V6, and images of runways and control towers will be virtually impossible to ignore. Which is not surprising, considering that this engine, the same one we use in the Montero, is the largest V6 in its class.<sup>1</sup> Mitsubishi engineers have designed it to deliver an aggressive level of torque. So you, and anyone lucky enough to ride with you, can enjoy off-the-line quickness and gutsy passing power. (The kind of power more commonly experienced in cars with high-flying insurance premiums.)

Every Diamante features semi-direct electronic ignition for consistent combustion which, in turn, helps deliver all that explosive power. You'll also appreciate Diamante's completely civilized four-speed automatic transmission with adaptive shift control. It actually "learns" your driving style, and adapts its shifting to match. A stainless steel exhaust system with dual exhaust pipes is included as well. Corrosion-resistant, for sure. The cool look's a bonus.

<sup>1</sup>Class defined as the import segment of the near-luxury class as defined by *Automotive News*.

fasten your seat belt and  
**secure your tray table**  
in the full, upright position.



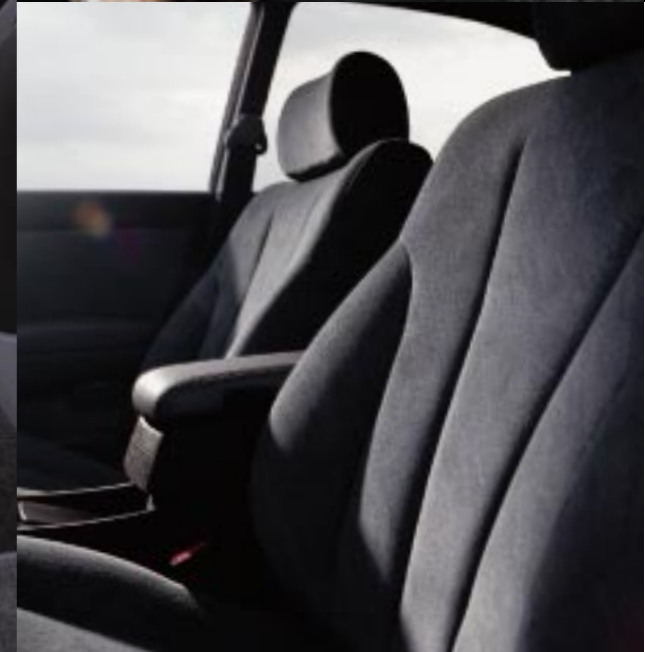


### [mitsubishicars.com/safety](http://mitsubishicars.com/safety)

The Diamante delivers a fine blend of styling and power. But what good is a sharp suit and tie if your hair's not combed? Rest assured, every Diamante comes complete with proper road manners. Delivered, in part, by four-wheel independent suspension and variable-assist power rack-and-pinion steering. Which should bring a satisfied grin to your face each time you challenge an unsuspecting curve. There are anti-lock disc brakes at all four wheels to ensure optimal stopping in a multitude of situations. In addition to ABS, every Diamante now features EBD, a system that distributes brakeforce between your front and rear brakes, thereby adding considerable control when braking. And for added safety, especially in wet conditions, you may opt for traction control – a system that electronically applies braking to any wheel that is slipping.

Your safety, and the safety of your passengers, has always been a primary concern of Mitsubishi engineers. Which is why you'll find a body reinforced with side impact door beams and front and rear crumple zones to direct impact energy away from passengers. You'll also find dual front air bags,<sup>1</sup> child safety locks, and three-point safety belts for all occupants. If you have small children, you'll be glad to know there are upper tether anchors, which let you easily and effectively secure a child seat in the rear. For added security, an alarm system with remote keyless entry, remote trunk release and panic button is a standard feature.

<sup>1</sup>Always place an infant in a rear-facing infant seat in the rear seat. Always transport children 1 to 12 years old in the rear seat and use appropriate child restraints. Always buckle your safety belt. Keep 10" between the center of the air bag cover and your breastbone. Sit well back and upright without leaning against the window or door. Thank you.



[mitsubishicars.com/comfort](http://mitsubishicars.com/comfort)

The ample interior of the Diamante is matched only by its sense of quiet luxury. From the moment you seat yourself in the 14-way adjustable driver seat, with 2-position memory (LS), you'll know exactly what we're talking about.

When you drive the Diamante, you feel looked after, cared for. Diamante LS features a supple, leather-trimmed interior, with leather-wrapped steering wheel and shift knob, and offers heated front seats. Every model features a center console with a storage compartment and a unique cover that can be opened to either side (so choosing a great CD becomes an equal-opportunity endeavor). In addition to two cup holders in the front, there are two for rear seat occupants in the back of the front center console. Then there's the amazing HomeLink® Universal Transceiver (LS). It lets you operate your garage door, home lighting and even home-based appliances, all from the built-in overhead console inside your Diamante. It's a great security feature. Or, as you pull out of the driveway, a fun way to freak out your significant other inside the house.

you might just get used to the

echo.



## mitsubishicars.com/versatility

Every Diamante offers a selection of standard features often found as options on other cars. Which kind of makes a luxurious statement of its own, doesn't it? There are power windows that can be operated up to 30 seconds after turning off the engine. A tilt steering column. Automatic climate control and cruise control. Illuminated vanity mirrors. And two 12-volt accessory outlets – not that you're going to simultaneously talk on your cell phone and blow-dry your hair, but you could if you wanted to.

And what's a luxurious interior that doesn't bring music to your ears? Diamante fulfills this ever-important need by offering the Mitsubishi/Infinity® Premium audio system: 210-watts of power; eight lush, rich speakers; and an AM/FM stereo with CD player. Steering wheel-mounted audio controls add to your enjoyment of this system, while providing a measure of safety. In order to further the pleasure principle during road trips, commutes and errand-running alike, Diamante also offers a one-touch power sunroof, high-luminance instrument cluster and heated power sideview mirrors.<sup>1</sup> Remember, it's OK to feel this good in a car.

<sup>1</sup>These mirrors, along with heated front seats and traction control, are included in the optional All-Weather Package.

If we were to tell you which feature comes with which model for every single one of the features in this brochure, you probably wouldn't have read this far. That's what the **details** pages are for, and you'll find them on the next page. Thank you.



## mitsubishicars.com/accessories

Is it possible to surround yourself with too much luxury? Hardly. So treat yourself to a 6-disc in-dash CD changer for the ultimate in convenience. A sunroof wind deflector to tame the wind. And a cargo mat to maintain a spotless trunk. There are plenty of other accessories to add to your Diamante's repertoire. Just ask your Retailer for details.



### comfort and convenience

#### Standard equipment for both models.

Automatic climate control  
Height-adjustable steering column  
Cruise control  
10-way adjustable driver seat including dual height adjustment  
6-way adjustable front passenger seat  
Power windows with 30-second power reserve  
Power door locks with security logic  
Power trunk and fuel filler door releases, remote hood release  
Security alarm system with remote keyless entry, remote trunk release and panic feature  
Center console with armrest and storage compartment  
Cup holders, front (2) and rear (2)  
12-volt accessory outlets (2)  
Dimming interior, map and rear-seat lights  
Illuminated vanity mirrors  
Rear heater ducts

### audio

100-watt Mitsubishi AM/FM/CD audio system with 6 speakers

### instrumentation

Tachometer  
Digital odometer and digital tripmeters (2)  
Low fuel and oil pressure indicator lights

### safety

Dual front air bags<sup>1</sup>  
Child safety locks  
Tether anchors for upper portion of child seat  
Emergency illuminated inside trunk release  
Side-guard door beams  
Front and rear crumple zones

### engineering

3.5-liter 24-valve V6 engine  
Front-wheel drive  
4-speed automatic transmission with adaptive shift control  
Multi-port fuel injection  
Electronic ignition with anti-theft engine immobilizer  
Stainless steel exhaust system with dual exhaust pipes

### chassis and suspension

Unibody construction  
Front independent suspension with MacPherson struts and stabilizer bar  
Rear independent multi-link suspension with coil springs and stabilizer bar  
Power-assist ventilated front disc/solid rear disc brakes with ABS and Electronic Brakeforce Distribution (EBD)  
Variable-assist power rack-and-pinion steering  
16" alloy wheels  
P215/60 VR16 all-season tires  
Full-size spare wheel and tire

### exterior

Chrome grille accents  
Auto-off headlights  
Color-keyed power sideview mirrors  
Gray bodyside molding  
Electric rear-window defroster with timer  
Speed-sensitive variable intermittent windshield wipers  
Tinted glass with windshield shade band  
Power and glass diversity antennas

### options

**ALL WEATHER PACKAGE:** Traction control system \* heated sideview mirrors \* heated front seats

#### interior measurements

Headroom (in, front/rear)	39.4/37.5
with sunroof	37.6/36.3
Legroom (in, front/rear)	43.6/36.6
Shoulder room (in, front/rear)	55.9/56.0
Hip room (in, front/rear)	54.3/55.8
Cargo volume (cu ft)	14.2
Passenger volume (cu ft)	100.9

#### exterior measurements

Wheelbase (in)	107.1
Length (in)	194.1
Height (in)	53.9
Width (in)	70.3
Track (in, front/rear)	60.8/60.4
Curb weights	
ES	3439
LS	3549

#### performance

Horsepower @ 5000 rpm	205
Torque (lb-ft) @ 4000 rpm	231
<b>EPA fuel economy estimates<sup>2</sup>/capacities</b>	
City/highway	18/25
Fuel tank (gal)	19.0

<sup>1</sup> Always place an infant in a rear-facing infant seat in the rear seat. Always transport children 1 to 12 years old in the rear seat and use appropriate child restraints. Always buckle your safety belt. Keep 10" between the center of the air bag cover and your breastbone. Sit well back and upright without leaning against the window or door. Thank you.  
<sup>2</sup> EPA estimates to be used as a standardized comparison with other vehicles. Your mileage may vary depending on driving style and environmental conditions.

## details



16" five-spoke alloy wheel (ES)



16" six split-spoke polished alloy wheel (LS)



DIAMANTE ES



DIAMANTE LS



martinique green pearl



manhattan beige pearl



richmond red pearl



vail white



franklin silver metallic



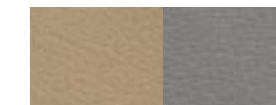
platinum white pearl



pendleton black pearl



tan or gray ascot fabric (ES)



tan or gray leather (LS)

Please see your Mitsubishi Retailer or our website for specific interior/exterior color combinations.

## We'll stand by you with Diamond Care.™

**WARRANTIES\*** Every 2002 Mitsubishi comes with a 3-year/ 36,000-mile New Vehicle Limited Warranty, a 5-year/60,000-mile Powertrain Limited Warranty, and a 7-year/100,000-mile Anti-Corrosion/Perforation Limited Warranty.

**DIAMOND CARE DELIVERY** Your new Mitsubishi will be prepared, inspected and explained to you prior to delivery.

**DIAMOND CARE PROTECTION PLAN** Extended service coverage for up to seven years or 100,000 miles after your purchase.

**LEASING AND FINANCING** Many leasing and financing programs are available through Mitsubishi Motors Credit of America, Inc. See your Retailer for details.

**DIAMOND CARE ROAD SERVICE** Should your Mitsubishi become inoperable due to a warrantable failure in the first three years or 36,000 miles, Mitsubishi Motor Sales of America, Inc. (MMSA), will authorize your vehicle to be towed to the nearest Authorized Retailer or Service Center at no charge. \*\*Towing beyond the three years or 36,000-mile limit for Diamond Care Road Service is covered and reimbursable if the problem that caused the need for the tow is still covered under warranty.

**CONCIERGE SERVICE** Available 24 hours a day, 365 days a year for the first three years or 36,000 miles. We'll do everything to get you back on the road and take care of you if you're stranded. We will assist you in making arrangements such as rental car and hotel reservations. We will also call your home or office to advise family members or colleagues of your inconvenience.

**NOTE** Technical data, features, options and other equipment shown in this brochure are based on the latest information available at the time of printing and are subject to change without notice. Headlights, parking lights, fog lights and instrument panel lights on vehicles may be illuminated for illustration purposes only. Some vehicles are shown with optional equipment. The trademark Mirage is used with the consent of Grand Touring Cars, Inc., Scottsdale, AZ.

**SAFETY** Safety is a two-way street. It requires your attention and cooperation. Please fasten your safety belt, drive responsibly and obey all local traffic laws.

**OPTIONAL EQUIPMENT** Availability of vehicles with specific features may vary. For further information contact your Retailer. For the Retailer nearest you, call 1-888-MITSUBRO2002 or visit our website at [mitsubishicars.com](http://mitsubishicars.com).

\*See your Mitsubishi Motors Retailer for all limited warranty details.  
\*\*Towing will not be covered if your vehicle is driveable and driving would not pose a safety problem or cause further damage to your vehicle; or is inoperable as a result of an accident, owner abuse, lack of maintenance, or driver error. Diamond Care Road Service towing coverage applies only to vehicles within the continental U.S., Alaska and Hawaii.

♻️ Litho in USA on Recycled Paper.

©2001 Mitsubishi Motor Sales of America, Inc., 6400 Katella Ave., Cypress, CA 90630-0064. Part Number NATLBRO-02-002