

# LAND ROVER LR4

2010 MODEL YEAR





**Bold. Flexible. More luxurious.** With a new progressive, more contemporary exterior. With a new engine for even greater breadth of performance and refinement. And an all-new interior that's more practical and more premium than ever before. Added style. Added luxury. And added capability. New 2010 Land Rover LR4.







**Fresh attitude.** A more refined, more modern presence on the road. Striking new headlamp styling with the unique night-time visual signature, a new lattice grille and a new, re-profiled front bumper with improved aerodynamics.

**New levels of power.** The new LR-V8 engine improves driveability, increases refinement and harnesses the very latest technology for outstanding overall performance. More power. More torque. More driving pleasure. New Land Rover LR4.





Tough luxury. New LR4 introduces a more tactile, sumptuous new interior that provides increased levels of craftsmanship and comfort. There are improvements to ergonomics too. And design. Driver information is more clearly presented and access is more intuitive. Premium materials. Premium practicality. New Land Rover LR4.



AIRBAG



**New LR4 puts you in charge.** Land Rover's legendary command driving position connects you with the road and the surrounding environment. Redesigned switches on the steering wheel and controls that are close to hand put intelligent technology at the fingertips. More capability. More driveability. New Land Rover LR4.







**Flexibility. Loads.** Up to seven adults. All travelling in comfort, in their own full-size seat. Or up to 90.33 ft<sup>3</sup> of cargo space. Whatever you're carrying you'll stay well within new LR4's comfort zone. In fact, new LR4 is the comfort zone.





**Outstanding breadth of capability.** No matter where the journey takes you. Terrain Response® configures new LR4's engine, transmission and traction settings to help you cope with all conditions. It gives you instant access to over sixty years of Land Rover's all terrain vehicle expertise for added confidence and security. More technology. New Land Rover LR4.



## EXTERIOR COLORS



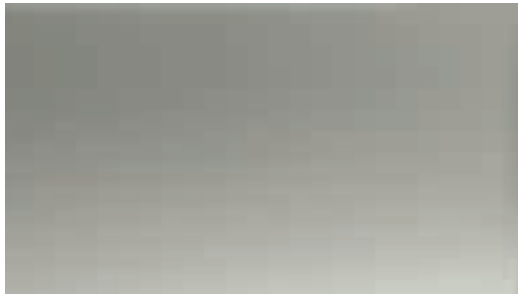
ALASKA WHITE - SOLID



BALI BLUE - METALLIC



BOURNVILLE - METALLIC



IPANEMA SAND - METALLIC



IZMIR BLUE - METALLIC



LUGANO TEAL - METALLIC



RIMINI RED - METALLIC



SANTORINI BLACK - METALLIC



STORNOWAY GREY - METALLIC

† Marmaris Teal replaces Lugano Teal from January 2010



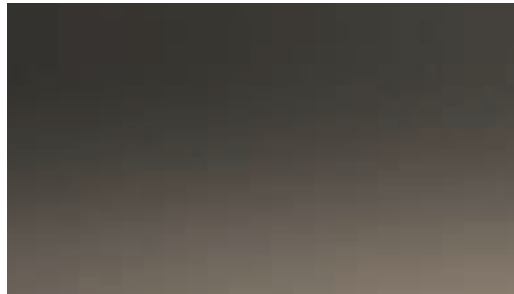
BUCKINGHAM BLUE - METALLIC



GALWAY GREEN - METALLIC



MARMARIS TEAL - METALLIC



NARA BRONZE - METALLIC



ZERMATT SILVER - METALLIC

### INTERIOR FINISH

Choice of interior finishes applied to the centre of the facia and upper door casings.



Straight Grain Walnut



Grand Black Lacquer

### INTERIOR TRIM

#### Seat Trim

Almond Leather

Ebony Leather

Almond Premium Leather\*

Ebony Premium Leather\*

\* Electrically Adjustable Seat Bolsters standard. Almond interior is complemented by a choice of Nutmeg or Arabica to the top of the facia and door casings and Nutmeg carpets.

## WHEELS



**LR4**  
**19 INCH 7-SPOKE ALLOY WHEELS**  
Tire Specification: 255/55 AT



**HSE**  
**19 INCH 7-SPLIT SPOKE ALLOY WHEELS**  
Tire Specification: 255/55 AT



**OPTIONAL**  
**20 INCH 10-SPLIT SPOKE ALLOY WHEELS**  
Tire Specification: 255/50 AT

**Please note:** When choosing vehicles fitted with specific wheel and tire combinations or optional wheels and tires, your intended use of the vehicle should be considered. Wheels with larger diameters and lower profile tires may offer certain styling or driving benefits, but may be more vulnerable to damage, please discuss your requirements with a Retailer when selecting your vehicle and specification.



## STANDARD FEATURES

### Engine and Transmission

- Permanent four-wheel drive
- Cruise Control
- Six-speed adaptive automatic gearbox
- Four-wheel Electronic Traction Control (ETC)
- Hill Descent Control with Gradient Release Control
- Push Button Start
- Lockable Centre Differential
- Two-speed electric transfer box
- Front/rear split differentials.

### Suspension and Steering

- Power assisted speed proportional and variable ratio steering
- Independent front and rear suspension
- Active Roll Mitigation (ARM)
- Dynamic Stability Control (DSC).

### Safety and Security

- Electric Park Brake (EPB)
- Electronic Brake Assist (EBA)
- Passive engine immobilisation
- 4 Channel all-terrain Anti Braking System (ABS) with all round ventilated disc brakes
- Auto lock upon drive away
- Centrally mounted high level stop lamp
- Row one driver and passenger front, side and head curtain airbags. Row two head curtain airbags
- Tire Pressure Monitoring System (TPMS).

### Interior

- Automatic climate control
- 5 inch TFT Driver Information Centre
- Global open/close windows
- Steering column - manual adjust for height and reach
- Steering column - electric lock (market variation)
- Remote steering wheel mounted audio controls
- **harman/kardon**® audio system featuring nine speakers including passive sub-woofer, audio amplifier and single CD
- Smokers Pack
- Loadspace cover - parcel shelf
- Sunvisors - illuminated vanity mirrors
- Bright Pack
- Leather Pack.

### Exterior

- 19 inch 7-Spoke Alloy Wheels
- Upper/lower split rear tailgate
- Colour coded front bumper, wheel arches and tailgate applique panel
- Privacy glass to rear of B post
- Rear park distance control
- Sunroof and Alpine roof.

### OPTIONAL FEATURES

- Surround Camera System with power folding exterior mirrors and approach lamps
- Rear seat entertainment system
- Roof rails
- iPod® connectivity lead no cost option.

### OPTION PACKAGE

#### 7 Seat Package

Row three seats and head airbag, accessory socket row three/load space, complex 35:30:35 row two seats, map lamps row three.

#### 7 Seat Comfort Package

7 Seat Pack and rear climate control.

#### Cold Climate Package

Heated front screen, heated washer jets, heated seats front and rear, heated steering wheel (US market).

#### Bright Package

Front fog lamps, headlamp power wash, automatic headlamps, rain sensing wipers, electrochromatic interior mirror including Homelink, puddle and footwell lamps.

#### Leather Package

Leather seat facings, driver and passenger armrest, leather gearknob and gaiter, eight-way electric driver and passenger seats, driving seat memory and power lumbar support.

#### Premium Leather Package

Premium leather seat facings, driver and passenger armrest, leather gearknob and gaiter, eight-way electric driver and passenger seats, driver seat memory and power lumbar support, electrically adjustable front seat bolsters, premium leather centre console lid.

#### Tow Pack

Plug in tow ball and socket.

#### HD Pack

Active Rear Locking Differential, Spare Wheel - Full size alloy.

### HSE Package

Sirius Satellite Digital Audio Receiver System (SDARS)



**harman/kardon**® Hi ICE audio system featuring nine speakers including passive sub-woofer, audio amplifier, USB connectivity and single CD  
Portable Audio Interface - allows connection of iPod®, MP3 player and Mass USB storage device (iPod connectivity lead no cost option)\*

Cold Climate Pack (USA market only)

Steering Wheel - Heated (Canada market only)

HSE Badge

19 inch 7-Spoke Alloy Wheels

Parking Aid - Front

Bluetooth® telephone connectivity

Premium Navigation System

Steering Column - Electric Adjustment for Height and Reach.

### HSE Plus Package

*In addition to the HSE Pack:*



HD Digital Radio (USA only)

Automatic headlamps

with high beam assist

Interior Mood Lighting

Keyless Entry

Parking Aid - Rear Camera.

### HSE LUX Package

*In addition to the HSE Plus Pack:*

**harman/kardon**® LOGIC7® Premium ICE audio system featuring 14 speakers including sub-woofer, DSP amplifier, rear seat headphone modules, USB connectivity and single CD. Fitted in conjunction with the navigation system

Centre Console - Front, lower cooler box

Adaptive Front Headlamps

Premium Leather Pack.

### ENGINE CAPACITY

V8

<b>Max Power</b>	BHP/rpm (SAE)	375/6500
	kW/rpm	276/6500
	PS/rpm (EEC)	375/6500
<b>Max Torque</b>	ft/lbs (SAE)	375/3500
	Nm/rpm (EEC)	510/3500
<b>Acceleration</b>	0-60 mph	7.5
	0-100 kph	7.9
<b>Max Speed</b>	Mph	121
	Kph	195
<b>CO<sub>2</sub></b>	g/km	328

Preliminary data correct at time of publication.

The Bluetooth® word mark and logos are owned by the Bluetooth Sig. Inc. and any use of such marketing by Land Rover is under license.

**harman/kardon**® and LOGIC7® are registered trademarks of Harman International Industries Incorporated.

iPod® is a trademark of Apple Inc.

[www.LandRoverUSA.com](http://www.LandRoverUSA.com)

**IMPORTANT NOTICE:** This publication is for international usage and while Land Rover take the utmost care in ensuring that all the details in the publication are correct at the time of going to press, we are constantly striving for improvement and therefore reserve the right to alter specifications and equipment without notice. Details of specifications and equipment are also subject to change to suit local market conditions and requirements, and not all products are available in every market. Some vehicles may be shown with accessories or optional equipment fitted. The colors reproduced here are subject to the limitations of the printing process and may therefore vary slightly from the actual vehicle. The company reserves the right to alter or withdraw any color finish without notice. Some of these colors may not be obtainable in your country, please check availability with your Land Rover Retailer. Please consult your Land Rover Retailer who will be pleased to advise you on current specifications and delivery availability. Distributors and Retailers are not agents of Land Rover and have absolutely no authority to bind Land Rover to any express or implied undertaking or representation.

Jaguar Land Rover North America, LLC  
555 MacArthur Blvd.  
Mahwah, NJ 07430  
1-800-FIND-4WD  
[www.LandRoverUSA.com](http://www.LandRoverUSA.com)

©Land Rover 2009. Publication Number: LRML 2890/09



BY APPOINTMENT  
TO HM THE QUEEN  
MANUFACTURERS OF  
LAND ROVER VEHICLES  
LAND ROVER, WARWICK



BY APPOINTMENT  
TO HRH THE DUKE OF EDINBURGH  
MANUFACTURERS OF  
LAND ROVER VEHICLES  
LAND ROVER, WARWICK



BY APPOINTMENT  
TO HRH THE PRINCE OF WALES  
MANUFACTURERS OF  
LAND ROVER VEHICLES  
LAND ROVER, WARWICK

