



MASERATI

MASERATI GRANTURISMO • MASERATI GRANTURISMO S



Information  
DEALER

IN A TIME WHEN CAR RACES HAD ONLY ONE FORMULA,  
MASERATI BEGAN USING THE SAME ENGINES FOR THE OPEN ROAD.

THE GRANTURISMO WAS BORN.









MASERATI GRANTURISMO S AUTOMATIC

<b>AUTHENTICITY</b> .....	6
ONLY THOSE WHO INVENTED IT CAN REDEFINE IT.	
<b>DESIGN</b> .....	11
STYLE IS A FAMILY TRAIT, UNMISTAKABLE THROUGHOUT GENERATIONS.	
<b>COMFORT</b> .....	16
ONE DRIVER’S SEAT. FOUR DRIVING EXPERIENCES.	
<b>TECHNOLOGY</b> .....	24
WITH VISION THERE IS LIGHT.	
<b>SAFETY</b> .....	46
PERFORMANCE AND SAFETY GO HAND IN HAND.	
<b>CRAFTSMANSHIP</b> .....	53
MASERATI GRAN TURISMO CUSTOMIZATION: TO WISH IS TO HAVE.	
<b>MASERATI PROGRAMS</b> .....	68
ENHANCING THE OWNERSHIP EXPERIENCE.	









Information provided by:



# 1. AUTHENTICITY

ONLY THOSE WHO INVENTED IT CAN REDEFINE IT.

**IT WAS 1947.** The original idea of installing a racing engine in a roadgoing car gave birth to the famed A6 1500 GT Pininfarina, the first Maserati “Granturismo.” Ever since, Maserati has led the world in the construction of cars with unmistakable class and thrilling performance—exciting to drive, with a comfortable interior and with an eye toward safety.

**60 YEARS LATER, THE DREAM LIVES ON.** Designed for daily as well as long journeys, **the Maserati GranTurismo** has been created for those who appreciate true sophistication, and want their car to deliver an emotional driving experience day after day.

**THE MASERATI PHILOSOPHY LOOKS TO THE FUTURE.** Excellence is achieved through passion in terms of both technology and hand-crafted quality. This is what it takes to win more than 30 international “Best Car” awards.\* In the modern, high-tech Modena factory, expertise, professionalism and loving care over every detail make our cars unique. All this is the outcome of the genuine passion that every engineer, technician and specialist uses to design, test and finish every single car as if it were their own.

\* visit the site [www.maseratitowards.com](http://www.maseratitowards.com)







STYLE IS A FAMILY TRAIT, UNMISTAKABLE THROUGHOUT GENERATIONS.





EUROPEAN VERSION SHOWN





MASERATI GRANTURISMO WITH 20" OPTIONAL WHEELS SHOWN

Information Provided by:  
**DEALER**  
E-PROCESS

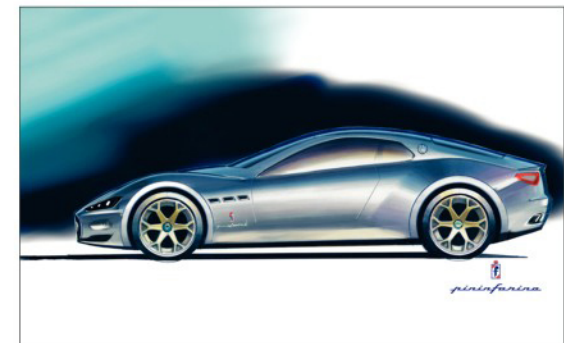
## 2. DESIGN

MASERATI  
DESIGN

STYLE IS A FAMILY TRAIT, UNMISTAKABLE THROUGHOUT GENERATIONS.

II

**EVERY NEW MASERATI IS ALWAYS STYLED TO BE A UNIQUE SYMBOL OF PRESTIGE. THE LINES, CURVES AND CONTOURS OF THIS GENERATION HAVE BEEN DRAWN BY PININFARINA'S MASTERLY HAND.** With its decisive personality and blend of power and elegance, the new Maserati GranTurismo is a modern day masterpiece. What's more, its style and design are combined with a presence of muscular lines and functional forms. Inspired by the Maserati Birdcage 75th concept car, the exterior appears powerful, with a natural fluidity that starts at the front grille and extends all the way along the sides to the tail lights. This stunning design, with careful attention paid to every detail, is the outcome of lengthy and meticulous aerodynamic studies. The wind tunnel, where the finishing touches were put on the GranTurismo's lines, was a crucial stage in this Maserati's development.





### GUIDE TO A UNIQUE STYLE

---

The imposing and captivating **front** culminates in the oval grille, with the headlights extending horizontally alongside to blend perfectly into the front end. The grille, comprised of vertical concave slats, is adorned with a chrome Trident that appears to be suspended in the middle. The long hood, with the classic “V” shape, has three air intakes on each side in classic Maserati style, which lighten the nose section and give an overall image of dynamism and verve.

The **rear** also echoes the GranTurismo’s sportiness and high-tech soul: the triangular rear lights use 96 LED lights, and a wide aerodynamic diffuser opens out over the bottom part of the bumper.

The **lines** of the interior highlight the unmistakable Maserati style: the distinctive “V” runs right along the top of the dashboard, outlining the traditional oval Maserati clock, and underscoring the exclusivity of this interior design. It also appears as the marque’s signature symbol on a variety of detail features, from the door panels to the rear pillars.

The restrained yet charismatic **detailing** is exquisite: the subtle chrome ring that decorates the buttons on the dashboard and steering wheel, the Trident logo that is hand-crafted on the seat head-rests, the Alcantara™ trim that lines the back of the paddle shifters and the storage compartments, all lined in soft, tactile material. These are just a few more examples of the attention to detail in which Maserati believes so strongly. All this creates an overall image that cannot fail to impress.

The result is a dynamic body and refined interior to match the GranTurismo’s prodigious power and performance.



### AN ATHLETIC LOOK FOR THE MASERATI GRANTURISMO S AUTOMATIC

---

Lean and athletic, the Maserati GranTurismo S is immediately recognisable by a series of stylistic details that underline its sporting nature. From the attractive black color of the grille and multi-Trident inspired 20" rims, to the integrated sideskirts all this not only gives the car a decidedly sportier, more aggressive character, but also increases its aerodynamic efficiency.









ONE DRIVER'S SEAT. FOUR DRIVING EXPERIENCES.

Information Provided by:  
**DEALER**

# 3. COMFORT

ONE DRIVER'S SEAT. FOUR DRIVING EXPERIENCES.

**ON LONG JOURNEYS OR ON DAILY DRIVES, TRAVEL IS ALWAYS SENSIBLE. PLEASURE IS JUST AS IMPORTANT AS SPEED AND SAFETY.** Designed for daily driving as well as long journeys, the Maserati GranTurismo comfortably allows 4 adults to fully appreciate the pleasures of life on-board, surrounded by materials and craftsmanship that are unmistakably Maserati. The spacious seating allows for plenty of room to stretch one's legs, relax, and enjoy the ride in the car's beautifully finished interior.





Information Provided by:  
**DEALER**  
COM









Information provided by  
**DEALER**

ALUMINUM COLORED TRIM SHOWN. NOT AVAILABLE IN NORTH AMERICA



### A LUXURIOUS, FUNCTIONAL INTERIOR

---

Both 10-way electrically adjustable **front seats** are designed with a sports configuration of both the seat and the seat-back. Again the classic Maserati “V” shape adorns these body-enveloping seats. Creating a superior level of comfort and supporting the top half of the body and legs when maneuvering curves at high speeds, the seats can keep you warm with three temperature settings.

The **steering wheel** reflects the sporty design and styling of the seats: leather-covered, and ergonomically positioned, it invites the driver to comfortably grip the wheel and maintain control while managing interactive driving and additional vehicle functions. The most often used multimedia functions can be controlled through the buttons on the steering wheel, and are displayed on the 7” screen of the **Maserati Multi Media System**, in the center of the dashboard.

Access to the **rear seats** is simple thanks to the **Easy Entry** system on both driver and passenger sides: the front seats move forward electronically, giving ample room to enter or exit the second row of seats. There are two individual seats for those sitting in the back with the same sporty profile as the front seats and well suited for two adults.

Comfort in the back is enhanced by the center pull-down armrest and two climate control vents. Further examples of the attention paid to rear seat passengers are the two cup-holders located on the back of the center console, the courtesy lights, and the side pockets.



## LUXURY IN MUSIC

---

Those drivers and passengers who are looking for top quality audio systems will be particularly impressed by the **Bose® Surround Sound System**, that has been specially designed and built to match and blend in with the GranTurismo's acoustics. Starting from the idea that top audio quality should be designed into the car from the very beginning, Bose® has created a system that can offer music reproduction on a par with that of the best concert halls in terms of depth, clarity, and tone: 11 speakers delivering both power and clarity for superior sound.

## COMFORTABLE IN ALL CONDITIONS

---

The **automatic dual-zone climate control** allows those on-board to select different temperature settings and is designed to automatically adjust the intensity of ventilation in relation to the outside temperature. The system is fitted with a defogging sensor: if the glass surfaces start to fog up, this automatically operates to reduce the humidity content of the air.

When traveling over long distances, it is a pleasure to find that the car's interior offers a vast array of luxury; Maserati offers its customers the choice of a vast selection of materials and color combinations, to create an environment that is truly to their own tastes, making each journey a sensual experience.





WITH VISION THERE IS LIGHT.



Pro





Information Provided by



# 4. TECHNOLOGY

WITH VISION THERE IS LIGHT.

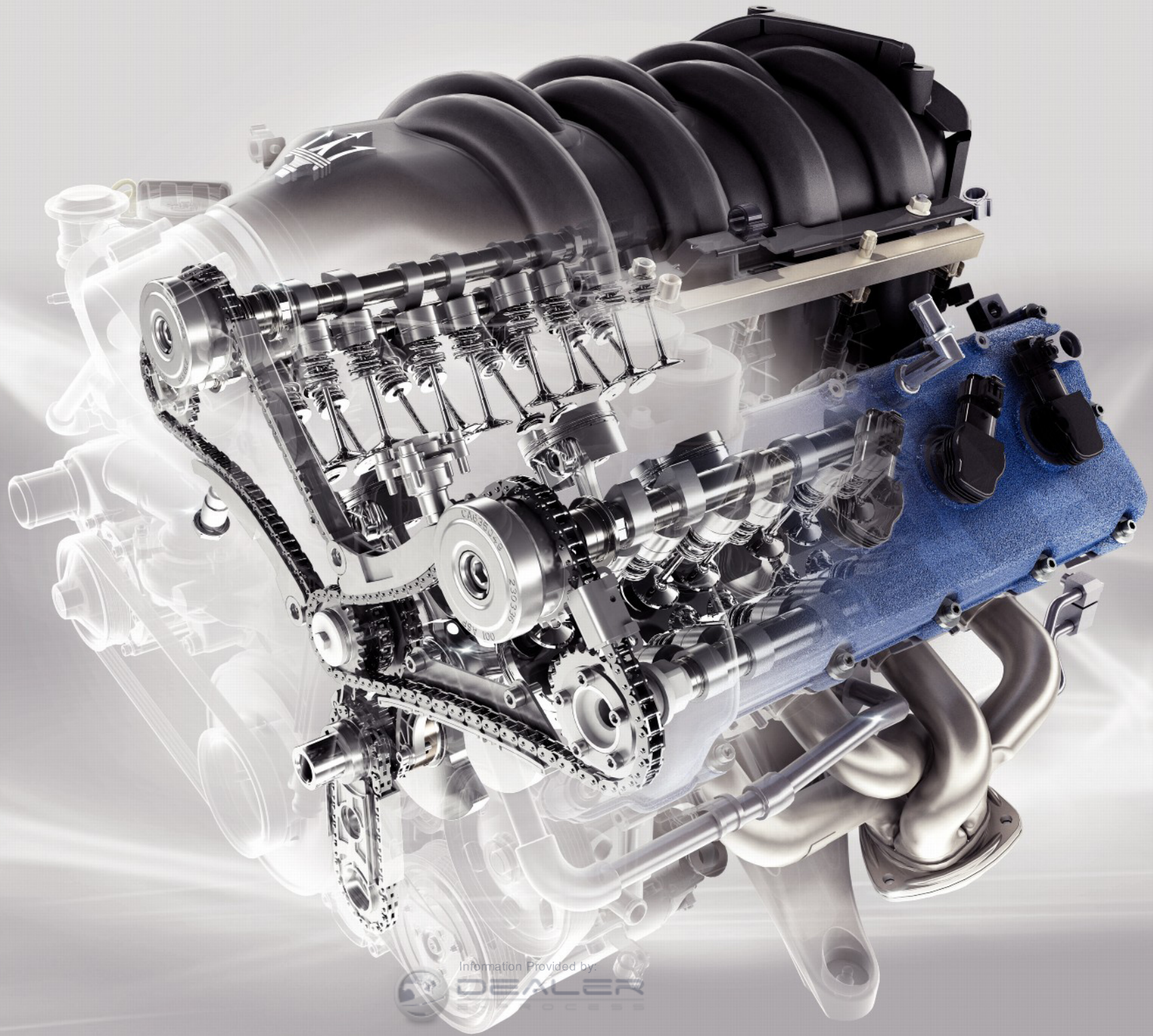
**SOME CARS, LIKE THOSE WHO CHOOSE TO OWN THEM, HAVE AN IMMENSE HEART.** The vital pulse of the Maserati GranTurismo comes from its V8, 4.2 L or 4.7 L for the GranTurismo S engine. The masterly design of this engine generates the power and rapidity typical of the competition engines from which Maserati has always drawn its inspiration. This V8 has been designed to give extreme responsiveness to every input on the accelerator. The new Maserati GranTurismo is a car that can satisfy any desire, but with particular attention to fuel consumption, maintaining a smooth ride, and noise control in the car's interior.





Information Provided by  
**DEALER**  
E-PROCESS





MASERATI V8 ENGINE 4.2 L

Information Provided by:  
**DEALER**



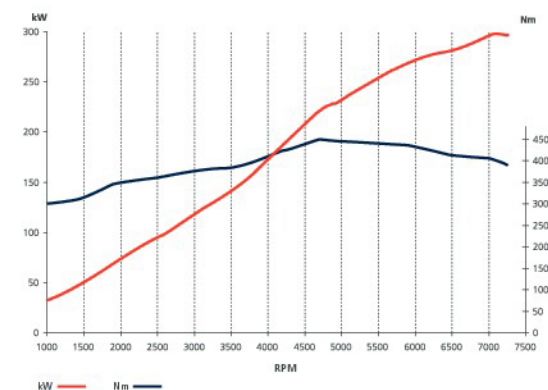
### MASERATI GRANTURISMO - V8 - 4.244 cm<sup>3</sup> - 405 HP

Compact, light (just 397 lbs - 186 kg) and very responsive, the Maserati GranTurismo engine can deliver 405 hp at 7,100 rpm, equivalent to a specific power of 96.4 hp/liter, and a maximum torque of 339 lb-ft torque (460 Nm) at 4,750 rpm, of which 75% is developed at just 2,500 rpm. The result is astonishing: 0-60 mph in 5.1 sec (0-100 km/h in 5.2 sec). The V8's timing is operated by two twin chain-driven overhead camshafts per bank, and four valves per cylinder controlled by hydraulic tappets; the lubrication system features a wet sump, resulting in a smoother running engine.

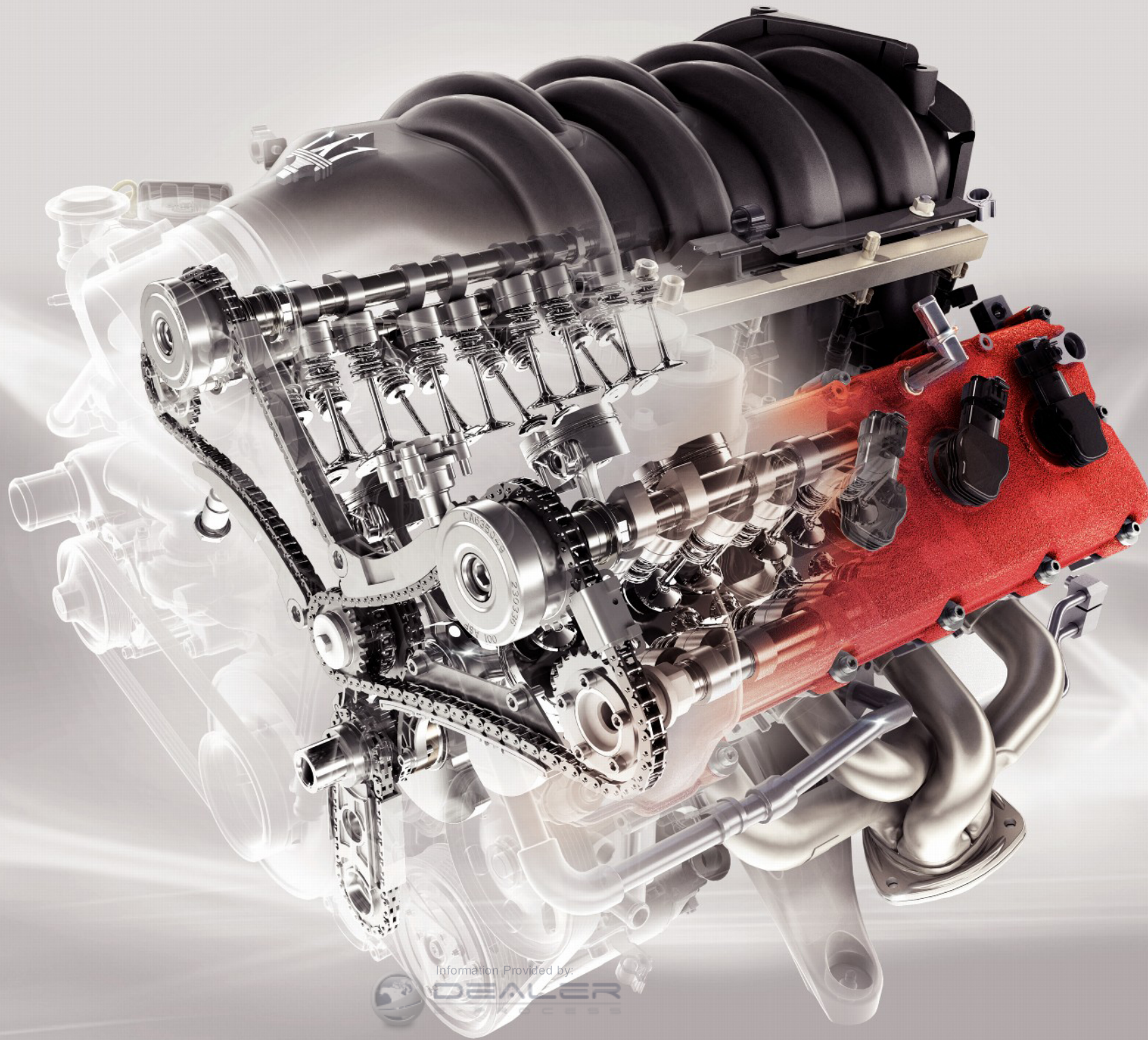
The powerplant's dynamic performance is constantly optimized by its microprocessor control units (ECUs), which communicate with the other systems through a CAN (Controlled Area Network) line. The **acceleration** provided by the Maserati V8 is immediate, and thanks to the electronic **Drive by Wire** throttle control, the car responds to even the slightest touch of the pedal.

**The 6-speed automatic transmission by ZF** is designed to provide smooth, relaxed driving, without losing any of the excitement of a great touring car. The winning team of Maserati and ZF is responsible for creating the reliability and refinement that can be expected of this transmission, along with a host of innovations in transmission technology. The transmission is designed to respond with the utmost versatility in every situation, and has the capability to automatically select the optimal operating mode. In the highest-performance mode, for those who want to push the Maserati GranTurismo's sporting soul to its limits, the transmission allows ultra-fast gear changes up to 7,200 rpm, a much higher engine speed compared with its direct rivals. For a more relaxed driving style, the transmission has been designed with ratios that reduce fuel consumption and interior noise at high speeds, maintaining unrivaled comfort and smooth gear shifts.

The Maserati V8 engine sound is unique: deep-toned at low rpms, fearsome in its crescendo, and awe-inspiring at its highest rpms. Four chrome tailpipes provide controlled amplification of the engine note, an absolute thrill for anyone on-board a Maserati GranTurismo.







MASERATI V8 ENGINE 4.7 L

Information Provided by:  
**DEALER**



### MASERATI GRANTURISMO S - V8 - 4.691 cm<sup>3</sup> - 433 hp

---

A state-of-the-art wet sump powerplant: the powerful new 4.7 liter V8 engine, can generate 433 hp at 7,000 rpm, and a maximum torque of 361 lb-ft torque (490 Nm) at 4,750 rpm.

Specially developed to increase the car's performance and make the Maserati GranTurismo S an even more thrilling driving experience, it soars to 7,200 rpm, with a rev limiter set at 7,600 rpm.

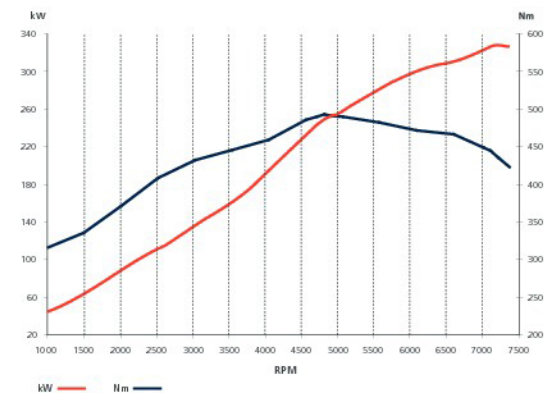
As well as providing the smoothest of motoring for everyday use, this new engine reveals an unmistakable sporting character as the accelerator pedal goes down, and a deep sound erupts from the exhaust as the pneumatic bypass valves open.

The increase in displacement compared to the existing Maserati V8 4.2 liter powerplant has been achieved with careful consideration of the unit's weight and size; the steel cylinder linings make a major contribution to keeping down the engine's weight and size, especially its length.

Dynamic performance is further optimised by the single timing chain, which also gives the engine exceptional reliability and minimizes fuel consumption by reducing friction.

Sharing the philosophy of the latest Maserati engines, the 4.7 liter powerplant of the GranTurismo S has a wet sump lubrication system, reducing the number of oil pumps to provide a significant drop in operating noise, another feature in this car's ideal balance between comfort and sporting performance.

The result is clear: 0 to 60 mph in just 4.9 seconds.





Information Provided by  
**DEALER**





Information Provided by



MASERATI GRANTURISMO S AUTOMATIC



*Pressing the SPORT button also changes:*

- The way the Maserati stability control system (MSP) operates;
- The stiffening of the electronically controlled Skyhook suspension;
- On the GranTurismo S, the valves in the exhaust system open at engine speeds over 3000 rpm giving the exhaust gases an unimpeded exit path and a unique voice to the engine.

## THE EVOLUTION OF THE TRANSMISSION

---

The GranTurismo's **transmission** is fitted with auto-adaptive software designed to automatically adjust gear changing to different driving styles and road conditions. There are 4 different operating modes.

**Normal Mode.** When driving normally, with steady acceleration, gear changes occur at relatively low revs to achieve the most comfortable ride. If the driving style becomes more sporty while in Auto Normal mode, the gear shifts automatically take place at higher engine speeds to enhance performance.

**Sport Mode. Selected via the SPORT button,** this is intended for those who prefer a sporty driving style. Gear changing takes place at very high engine speeds and, thanks to a "fuel control" engine program specially developed for the Maserati GranTurismo, gear shifts are 40% faster than in Normal Mode. Automatic downshifts are programmed to provide the lowest gear possible as a curve approaches; this helps maximize control through the curve and provides extra speed when exiting the bend. In this mode one can fully appreciate the exhilarating way the GranTurismo copes with a series of fast corners.



---

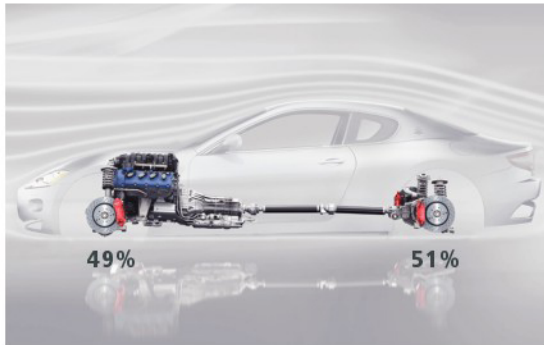
**ICE Mode.** Selected by pressing the ICE button, this has been developed for conditions where tire grip is poor. Activation of the Auto ICE mode reduces the maximum torque at the wheels, helps prevent starts in first gear, and only allows gear changes at a maximum of 3,000 rpm. This mode helps to provide traction even in the most slippery conditions.

**Manual Mode.** Manual Mode is available for maximum driving enjoyment and can be selected by moving the gear lever from “D” to the “+”/“-” position. In this case the gears are selected directly by the driver sequentially, either via the gear shift lever or the paddles integrated on the steering column (Active Shifting). The driver can switch from using the gear shift lever to the paddles (leaving the gear lever in the “+”/“-” position) at any time.

The paddle shifter used by Maserati, different from most other similar systems as they are connected to the steering column, are truly user-friendly, thanks to their size and ergonomic positioning.

The **automatic transmission** is located at the front of the car in line with the engine. The **drive shaft** is articulated into two sections, transmitting the drive to the wheels via a self-locking differential (lock percentages: 25% in traction, 45% in release) which helps both to limit slip and to provide optimal traction control.





*The main benefits of the optimal Maserati weight distribution are:*

- Maximization of traction when accelerating
- Optimization of traction when accelerating on low grip surfaces
- Outstanding road holding (lateral acceleration up to 1 g)
- Exceptionally stable and balanced performance during emergency maneuvers
- Better balance and traction during braking.

### INNOVATIVE FROM EVERY POINT OF VIEW

---

The **exhaust system** connected to the V8 engine uses metal catalysts rather than those made of ceramic material, just like on racing engines. Driving a Maserati GranTurismo, the customer is behind the wheel of a car that meets the most stringent current anti-pollution laws, without having to compromise in terms of performance.

The new **load-bearing body** design boasts a mix of materials and technologies for weight optimization and strength. The central structure is made of steel, the hood and front reinforcement member of aluminum, and the trunk lid is constructed using **Sheet Molding Compound (SMC)** technology.

This technology keeps the component weight down and is more resistant to minor damage and corrosion. Its versatility also allowed the designers more room to apply their creative flair.

The GranTurismo's extremely rigid body, in conjunction with its sophisticated suspension system, helps to enhance the car's dynamic handling, while also reducing vibration. This optimizes on-board comfort whatever the road surface, and reduces movement of internal components. The **unibody**, constructed in high-strength steel box sections, incorporates a tubular structure in the rear to support the suspension and differential, while in the front it supports the suspension and engine.

This layout achieves the traditional Maserati rear biased weight distribution (49% front - 51% rear) with a slightly higher load on the rear axle. This makes the Maserati GranTurismo enjoyable to drive, responsive to commands, and enhances its safety. Moving the engine back behind the front axle generates a large number of dynamic benefits. In everyday use, it translates into balanced and predictable performance designed to make driving very easy.











---

Maserati is also justly proud of the GranTurismo's **suspension** and **steering**. The chassis features a front and rear wishbone suspension with forged aluminum hubs and arms in order to reduce weight in the unsprung mass. The suspension layout benefits from **Antidive** technology, which limits the front from pitching down when braking, and **Antisquat** technology, which limits the rear from pitching down when accelerating.

**The Skyhook system**, developed in collaboration with Mannesmann-Sachs, is designed to provide automatic and continuous control of the damping, absorbing irregularities in the road. This provides the highest level of on-board comfort, without penalizing performance and sporty handling. This system uses acceleration sensors that register the movements of each wheel and the body of the car: the control unit processes this data and interprets the driving conditions and the road surface, instantly adapting the setting of the shock absorbers accordingly, thanks to their proportional valves.

The Skyhook Suspension system gives the Maserati owner another advantage—it lets you adapt the dynamic behavior of the car to your own driving style and to road conditions, by choosing between two different settings, **Normal** and **Sport** (selected via the SPORT button). The first mode is characterized by soft damping for greater comfort. Alternatively, by pressing the SPORT button you can switch to a more firm setup, with greatly reduced roll angles and load transfer, enhancing the stability of the car. The new Maserati GranTurismo is suitable for everyday use but it is also a true sports car. This is clearly reflected in the sizes of **wheels** and **tires** selected for the car: a balanced combination of road holding and comfort. A sport-tuned single rate damping suspension system is available as an option on the GranTurismo S.

### **BRAKING SYSTEM: DUAL-CAST DISC TECHNOLOGY**

---

The Maserati **GranTurismo** has a **Brembo braking system** comprised of four ventilated discs, each with 48 precision perforations (disc diameter and thickness: 13 in x 1.26 in – 330 mm x 32 mm at the front; 13 in x 1.1 in – 330 mm x 28 mm at the rear). The calipers have four pistons of different diameters with ceramic isolating linings; the 4-channel **ABS** has electronically controlled braking distribution (**EBD**) integrated in the Maserati Stability Program (**MSP**).

The Maserati **GranTurismo S** is equipped with a **high-performing braking system**, with **dual-cast front brake discs**, developed in association with Brembo®.

Comprised of four ventilated discs, each with 48 precision perforations (disc diameter and thickness: 14.2 in x 1.26 in – 360 mm x 32 mm at the front; 13 in x 1.1 in – 330 mm x 28 mm at the rear), the dual-cast braking system for the front discs of the Maserati GranTurismo S consists of a cast iron disc and an aluminum hub. This combines the benefits of a larger disc for greater braking surface and cast iron's excellent performance at high temperatures while reducing the weight via the use of light weight aluminum. The rear discs are cast iron for the disc and hub.

The new Brembo® braking system for the front discs is completed by powerful six-piston aluminum fixed calipers, while the rear discs are slowed by four-piston calipers. The standard Black calipers of the Maserati GranTurismo are also available in 5 customized colors: Titanium and Yellow for a more striking look, Silver and Dark Blue for a more elegant effect and Red.





20" LIGHT ALLOY WHEEL IN TRIDENT DESIGN (STANDARD ON GRANTURISMO S)



### GRANTURISMO S EXHAUST SYSTEM

---

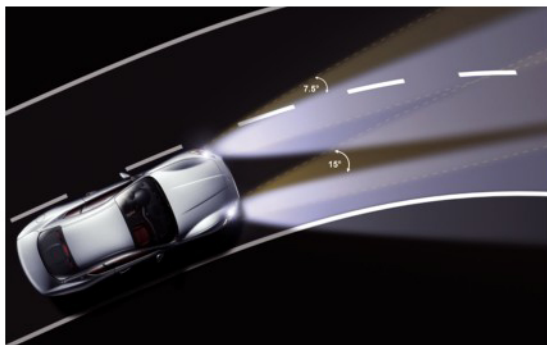
The exhaust system connected to the V8 engine uses metal catalysts rather than those made of ceramic material, just like on racing engines. Driving a Maserati GranTurismo S, the customer is behind the wheel of a car that meets or exceeds current emissions laws, without having to compromise in terms of performance.

The cylinder heads are made of aluminum alloy and integrate the system carrying secondary air into the exhaust manifolds, to help obtain low emission levels. All the conduits for water, oil and secondary air are cast directly into the engine to create a highly rigid, space-saving system, with improved durability and low engine noise. The exhaust silencers are also controlled by the “Sport” button on the dashboard. In Normal mode special exhaust flaps are closed, forcing the exhaust to follow a longer path. A longer exhaust path means the exhaust will lose energy and as a consequence the engine sound is reduced. The Normal mode is designed to provide comfort on board but also limits top engine performance. In the Sport mode, the exhaust flaps are opened allowing the exhaust to follow a shorter, quicker path. In addition to allowing a louder, deeper and more pronounced sound, the shorter path reduces back pressure allowing the engine to develop maximum power (433 hp). The Sport mode unleashes the full performance of the GranTurismo S with an audible growl from the exhaust.





Information Provided by  
**DEALER**  
E-PROCESS



*As far as security is concerned, the new Maserati GranTurismo is protected by an immobilizer with a transponder in the ignition key, and an alarm system consisting of:*

- An anti-lifting sensor, and volumetric ultrasound sensors
- Perimeter protection
- A siren under the hood
- A 3-button remote control with door lock/unlock and trunk-unlock functions.

### FLUID MOVEMENT, TOTAL CONTROL

---

With the new Maserati GranTurismo, visibility is really outstanding. The **Adaptive Light Control** increases the already high level of efficiency of the bi-xenon headlights, thanks to a special rotating mechanism. This function is designed to increase visibility on curves at night: the electronic unit controlling the beams instantly receives information on the steering angle, yaw, and speed of the vehicle and adjusts electrical devices inside the headlights to turn the beams in the appropriate direction. The rear lights feature 96 LEDs, which make the car clearly visible at night. These triangular lights also provide style which, for Maserati, is also top priority.

With **parking sensors** incorporated in the rear bumper, parking is made extremely simple; a display on the dashboard will help inform you how far you are from an obstacle while parking.

When traveling at a constant speed you can activate the **Cruise Control** to automatically maintain a pre-set speed. With the Cruise Control activated, the gear changes follow precise and pre-established strategies, taking into consideration the gradient of the road, and calibrated to maintain the maximum comfort for those on-board.

Electrochromic internal mirrors and electrically operated external door mirrors darken progressively as the intensity of light increases to prevent dazzling. And when you arrive home, the **Home Link** remote control allows for up to three frequencies to be programmed directly into the on-board system, for three different automatic garage doors or gates.



---

The new Maserati GranTurismo is equipped with the Maserati **Multi Media System (MMS)**: thanks to the large 7-inch color TFT high resolution display in the center of the dashboard, you can display the functions of the single-disc CD player, satellite navigation system (where available), car radio and on-board computer.

The performance of this system is enhanced by 30 GB of internal memory, which is capable of supporting the full map display and loading thousands of music files, the “jukebox” function, thus making it possible to do away with a CD changer. The vast internal memory notably reduces the time required to calculate a route and allows you to upload approximately 400 CDs, which can be copied directly from the Audio CD player.

The **satellite navigation** with its clear color display, and 3D graphic processor makes following a route extremely easy.

The system is simple and intuitive to use thanks to the controls at the center of the dashboard, while the steering wheel buttons give you easy access to the most frequently used functions. And from the perspective of comfort and safety, the audio system and navigation system can be operated through a voice command system to help limit distractions while driving.





REAR VIEW





PERFORMANCE AND SAFETY GO HAND IN HAND.



# 5. SAFETY

PERFORMANCE AND SAFETY GO HAND IN HAND.

Beauty and elegance are not enough. Even power, versatility and handling are not enough. **Maserati also strives to produce cars with a high degree of safety engineering.**

Feeling secure and comfortable on the road **ACTIVELY** contributes to the pleasure of driving:

- Electronic power steering is always functional when the car is moving. It provides the right amount of feel at high speeds as well as light and comfortable steering when maneuvering at low speed
- Race track developed Brembo brakes with four perforated self-ventilating discs with fixed calipers offer optimal stopping power
- Exclusive Maserati Stability Program (**MSP**) stability control system includes **ABS**, **EBD** and **ASR**
- **EPB** electronic parking brake
- Tire Pressure Monitoring System (**TPMS**) continuously checks the tire pressure
- **Adaptive Light System** turns the headlights in the direction of the car when going around curves.

## **AND PASSIVELY:**

- Unibody built using a new load-bearing body system
- Front airbags, side airbags integrated in the front seats, and side window airbags integrated in the door panels to provide protection for the passengers in the case of a collision
- Both front and rear seatbelts have electronically controlled pretensioners
- An inertia switch deactivates the fuel pumps to reduce the possibility of fire in case of a violent collision.





Information Provided by

**DEALER**  
E-PROCESS



*The MSP is designed to:*

- Recognize the onset of skidding and helps stabilize the car in milliseconds (MSP)
- Help prevent the wheels from locking under braking (ABS)
- Distribute the braking force between the front and rear axles to help prevent the rear wheels from locking (EBD)
- To help prevent the drive wheels from spinning on low-grip surfaces (ASR)
- To help prevent the drive wheels from locking when down shifting on low-grip surfaces (MSR).

## ACTIVE SAFETY

---

Quick, precise steering control helps improve comfort and safety on-board the Maserati GranTurismo and also provides an enjoyable ride. By using an **electronic interlocking** system, the action of the power steering is adapted to the speed and road conditions, giving the driver a true feel for the road both at high speeds and during low speed maneuvering.

Thanks to an optimal weight distribution for Maserati (49% front – 51% rear), obtained by moving the engine back behind the front axle, the road holding and grip under acceleration are excellent. But the pleasure of powerful acceleration would be nothing without the decisive braking capacity of the Brembo system with four perforated and self-ventilating discs.

The Maserati GranTurismo offers impressive performance in its brakes' capabilities and in their resistance to fade under intense use: the car boasts a stopping distance of just 114 feet from 60 mph to 0 mph (60 km/h to 0 in 35 m), with an average deceleration of 1.24 g.

The **MSP (Maserati Stability Program)**, developed exclusively by Maserati, is a stability control system that is designed to optimize the car's dynamics and safety capabilities on the road. The system has a series of sensors that can detect anomalies in the dynamic behavior of the car and, by using the brakes and engine, the system helps to stabilize the car and helps to provide control.



---

With the **EPB (Electronic Parking Brake)** on the new Maserati GranTurismo, you can apply the parking brake easily by using an electronic control on the center console rather than a traditional mechanical lever. Aside from replacing the traditional handbrake, the EPB also has a dynamic safety function. If necessary, it can be used when the car is moving; the system, communicating with the stability control (MSP), acts on all four wheels to obtain an immediate braking action (deceleration of 0.5 g), without loss in stability, until the control is released (to be used in emergency situations only or when stopping the car by using the brake pedal is not possible)

Through a set of dedicated sensors, the standard **Tire Pressure Monitoring System (TPMS)** is designed to check the tire pressure continuously. The system displays the tire pressures on the instrument cluster and warns the driver if they drop below a minimum level or if there is a puncture.

To make hill starts easier, the Maserati GranTurismo has a **Hill Holder**, a device which, on inclines greater than 12°, keeps the vehicle braked for just over one second, so the driver can move their foot from the brake pedal to the accelerator pedal without the car rolling back.

As an additional active safety measure, the **Adaptive Light System** turns the headlights in the direction of the car when going around curves.



## PASSIVE SAFETY

---

The load-bearing body helps enhance the safety of the new Maserati GranTurismo; furthermore, the application of the latest constructional technologies makes it possible to optimize the weight balance and performance. The structural part of the body is made of steel, the hood and front strut of the bumper are made of aluminum, while the trunk lid, made using Sheet Molding Compound technology, helps keep the weight of the car down.

The **six air bag system** on the Maserati GranTurismo has four individual sensors in the front and sides of the car and on a control unit located near the center console. The sensors of the two front air bags (both dual-stage) are designed to help control inflation so that it is directly proportional to the force of the impact.

The Maserati GranTurismo also has two **side air bags** integrated in the front seats and two **side window air bags** integrated in the door panels, designed to help provide protection for front seat passengers in the case of certain lateral impacts.

Both the front and rear **seatbelts** have electronically controlled pretensioners and load limiters, designed to help keep passengers in their seats even in the case of sudden deceleration. The seatbelt sensor lets the control unit assess the severity of the collision, taking into consideration whether the seatbelts are fastened or not, and inflates the front air bags accordingly, in terms of rapidity of intervention and inflation pressure.

Furthermore, the rear **Isifix attachments** offer secure fastenings for certain child seats, designed to help protect smaller passengers.





Information Provided by:  
**DEALER**

20" OPTIONAL WHEEL







# 6. CRAFTSMANSHIP

MASERATI GRAN TURISMO CUSTOMIZATION: TO WISH IS TO HAVE.

**FIRST AND FOREMOST, DRIVING MEANS CHOOSING.** Choosing the speed, the route, but also the style of your car. The equipment of the Maserati GranTurismo has been designed to meet almost any type of requirement, whether functional or a question of style. Similar to the traditions of crafting a hand-made suit, your GranTurismo should reflect your individualism and personality. The Maserati GranTurismo redefines the term luxury. No longer do owners have to adapt to the car; it's the car that adapts to the style and requirements of the owner. This is why Maserati offers such a wide range of customization possibilities: a great car only becomes a perfect match when it merges with the character, personality and temperament of its driver.



### BEAUTY IN YOUR HANDS

---

For those who use their car on a daily basis and want the best possible quality of life onboard, there is a wide range of equipment and accessories. At the top of the list is the option of **Poltrona Frau® leather** upholstery, which combines traditional craftsmanship and age-old techniques with inimitable Italian style. The hides used go through a meticulous selection process, and undergo the most thorough finishing before being used for the interiors of Maserati cars.

Poltrona Frau® leather, in fact, has some rather special characteristics: it is incredibly soft and snug in winter, yet cool and comfortable in the summer; what's more, the ventilated leather upholstery on the central part of the seats and seat-backs further increases comfort.

The combination of matching interiors is vast, and countless different permutations are possible thanks to the availability of:

- 10 colors of leather (Avorio, Sabbia, Cuoio, Marrone Corniola, Grigio Ghiaccio, Grigio Medio, Blu Navy, Rosso Corallo, Bordeaux, and Nero)
- 12 colors of stitching (Avorio, Cuoio, Marrone Corniola, Grigio Ghiaccio, Grigio Medio, Blu Navy, Bordeaux, Nero, Rosso, Bianco, Sabbia and Giallo)
- 3 fine woods (Rosewood, Walnut Briarwood, Wengè Polished) or 5 lacquered finishes (Bianco Ice, Giallo Decoro, Rosso Sigillo, Blue Laque, and Black Piano)
- 7 carpet colors, (Beige, Grigio Fumo, Blu, Rosso, Bordeaux, Marrone Corniola and Nero).

As some colors, trims and options are available only on the GranTurismo S Automatic and to fully appreciate the unique customising possibilities of the Maserati GranTurismo, visit the innovative car configurator on [www.configurator.maserati.com](http://www.configurator.maserati.com)





MASERATI GRANTURISMO S WITH MARRONE CORNIOLA INTERIOR





INTC COLOR UPON REQUEST FOR MAIN LEATHER AREAS AT NO EXTRA COST



STANDARD STEERING WHEEL AND GEARSHIFT IN BLACK LEATHER. COLOR UPON REQUEST AT EXTRA COST (OPTIONAL ST33)



DSH5 UPPER AND LOWER DASHBOARD AND REAR SHELF AREAS IN BLACK LEATHER AS STANDARD. COLOR UPON REQUEST AT EXTRA COST



TRGT COLOR UPON REQUEST FOR TRIMMING DETAILS AT NO EXTRA COST



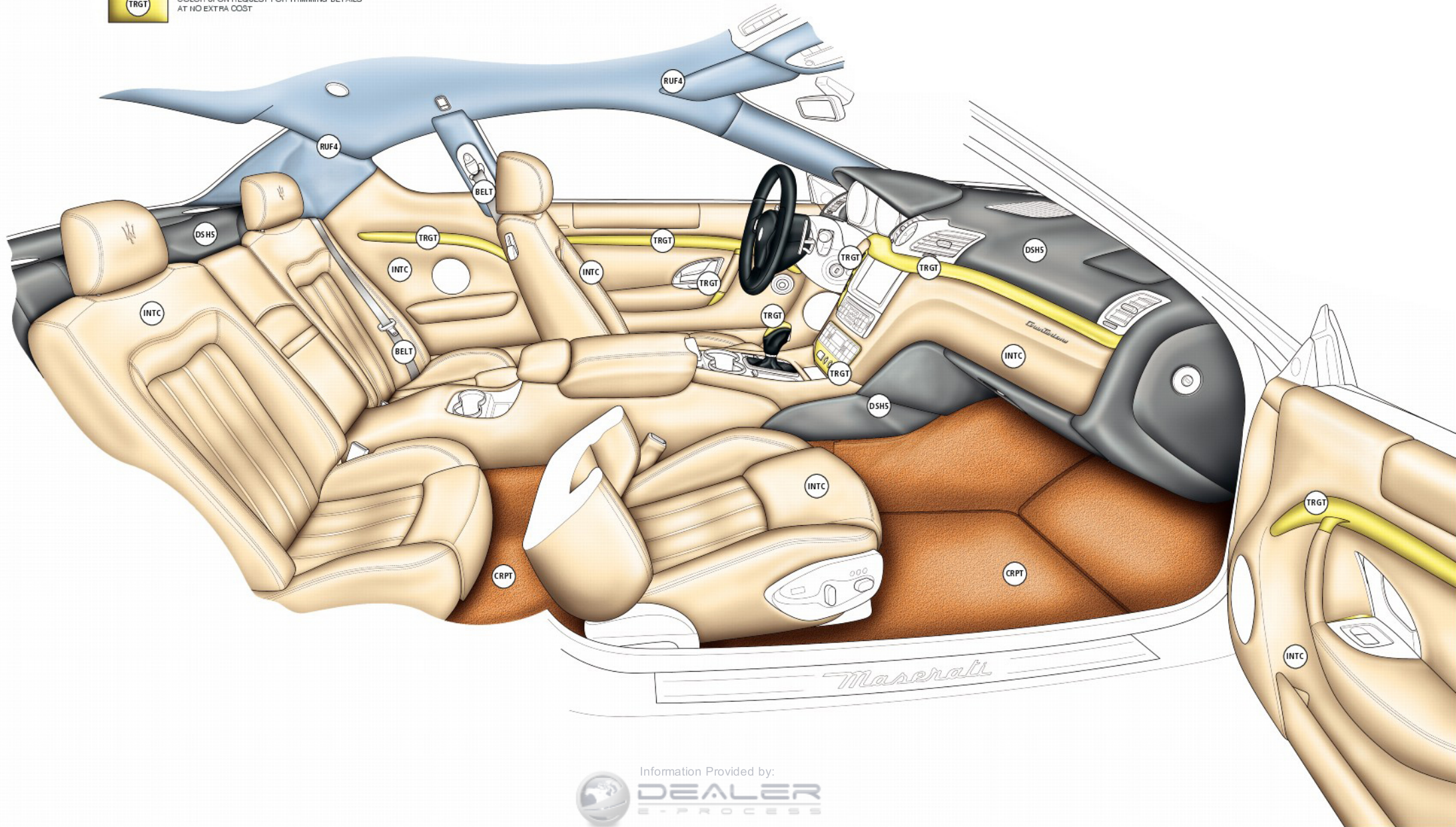
CRPT COLOR UPON REQUEST FOR INTERIOR CARPET AT NO EXTRA COST



RUF4 COLOR UPON REQUEST FOR HEADLINER CLOTH AT NO EXTRA COST



BELT COLOR UPON REQUEST FOR SEAT BELT AT NO EXTRA COST





## LEATHER COLORS



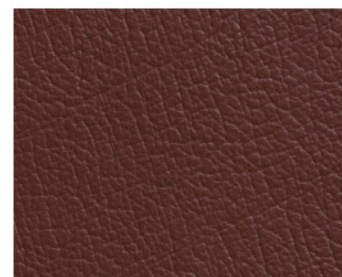
Avorio



Beige



Cuoio



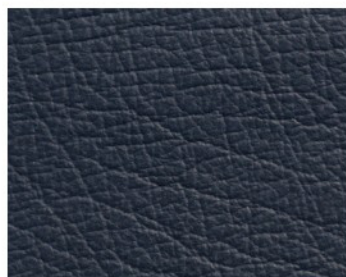
Marrone Corniola



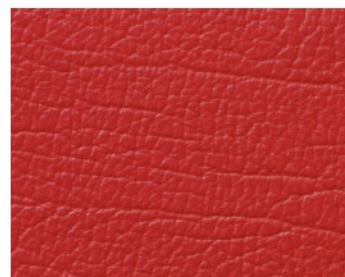
Grigio Ghiaccio



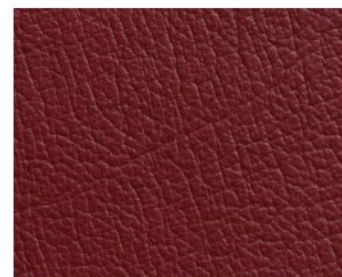
Grigio Medio



Blu Navy



Rosso Corallo



Bordeaux

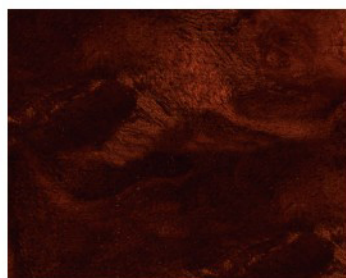


Nero

## INTERIOR WOOD TRIM



Rosewood



Walnut Briarwood



Wengè Polished



Smoked Quarz



Alu Grey

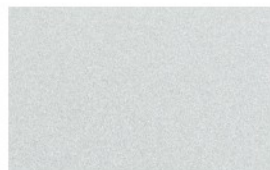
## STANDARD INTERIOR DETAILS

**PAINT COLORS**

---



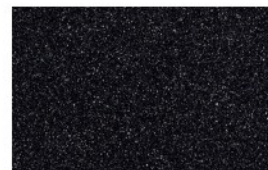
Bianco Eldorado (flat)



Grigio Touring



Grigio Alfieri



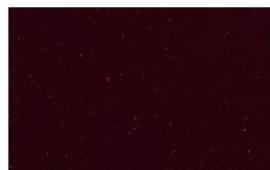
Grigio Granito



Blu Nettuno



Blu Oceano



Bordeaux Pontevecchio



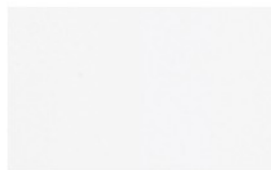
Nero Carbonio



Nero (flat)

**SPECIAL PAINT**

---



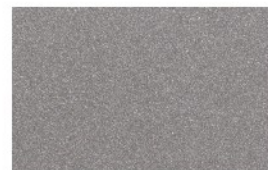
Bianco Fuji



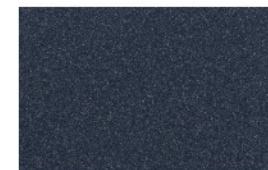
Giallo Granturismo



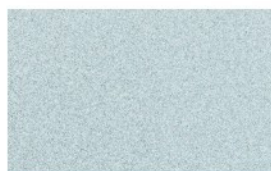
Rosso Mondiale



Grigio Nuvolari



Grigio Palladio



Argento Luna



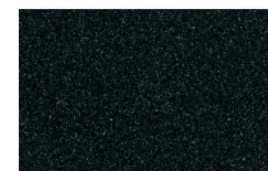
Blu Mediterraneo



Blu Sebring



Blu Malagò



Verde Goodwood



INTERIOR LACQUERED TRIM

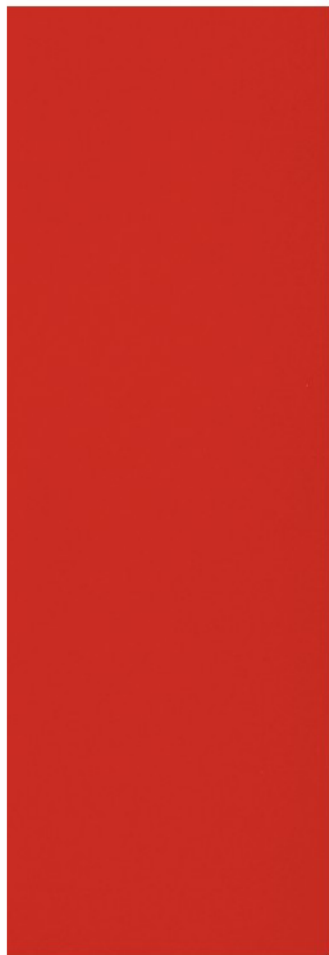
---



Bianco Ice



Giallo Decoro



Rosso Sigillo



Blu Laque



Black Piano

WHEELS AND BRAKES



Light alloy wheels 7 spokes "V" style  
(8.5J x 19" front; 10.5J x 19" rear)  
Standard on GranTurismo



Light alloy wheels 7 spokes "V" style  
in Grigio Mercury  
(8.5J x 19" front; 10.5J x 19" rear)



Light alloy wheels Birdcage design  
(8.5J x 20" front; 10.5J x 20" rear)



Light alloy wheels Birdcage design  
in Grigio Mercury  
(8.5J x 20" front; 10.5J x 20" rear)



Light alloy wheels Trident design  
(8.5J x 20" front; 10.5J x 20" rear)  
Standard on GranTurismo S



Light alloy wheels Trident design  
(8.5J x 20" front; 10.5J x 20" rear)

GRANTURISMO



Brake calipers painted Black  
Standard on GranTurismo



Brake calipers painted Silver



Brake calipers painted Red



Brake calipers painted Blue



Brake calipers painted Yellow



Brake calipers painted Titanium

GRANTURISMO S



GranTurismo S brake calipers  
painted Black  
Standard on GranTurismo



GranTurismo S brake calipers  
painted Silver



GranTurismo S brake calipers  
painted Red



GranTurismo S brake calipers  
painted Blue



GranTurismo S brake calipers  
painted Yellow



GranTurismo S brake calipers  
painted Titanium



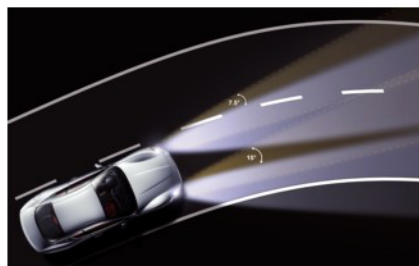
**MAIN SAFETY EQUIPMENT**

	GRANTURISMO	GRANTURISMO S AUTOMATIC
Bi-xenon headlights with headlight washing system	●	●
Adaptative headlights	●	●
Foglamps	●	●
Taillamps with high visibility LED lights	●	●
Automatically dimming rearview interior and exterior mirrors	●	●
Air-bag system: dual stage front bags, side bags, curtain bags - driver and front passenger	●	●
Front seat belts with pre-tensioners and load limiters; rear seat belts with pre-tensioners	●	●
Child seat ISOFIX attachments, rear	●	●
Maserati Stability Program (MSP) - includes: - traction control (ASR), - anti-lock braking system (ABS), - electronic brake distribution (EBD), - engine torque control (MSR)	●	●
Tire Pressure Monitoring System (TPMS)	●	●
Tire sealing compound and electric air compressor	●	●
Single damping suspension system Sport set-up	X	○
Skyhook - electronically variable active damping system	●	●
13 in (330 mm) cross-drilled brake discs - front and rear	●	X
14.2 in (360 mm) cross-drilled brake discs front and 13 in (330 mm) cross-drilled brake discs rear	X	●
Speed sensitive power-assisted steering	●	●
Electronic Parking Brake (EPB)	●	●

STANDARD ● OPTIONAL ○ NOT AVAILABLE X



Bi-xenon headlights with headlight washing system



Adaptive headlights



Six air bags



Automatically dimming rearview interior mirror

**EXTERIOR EQUIPMENT**

**GRANTURISMO**

**GRANTURISMO S AUTOMATIC**

Metallic paint	●	●
Special color paint	○	○
Front grille with vertical grille bars	●	●
Chromeline exterior trim	●	●
Door mirrors - electrically operated, folding and heated	●	●
Electric opening assist for trunk lid	●	●
Lightweight trunk lid construction, with remote key unlocking	●	●
Rear parking sensors	●	●
Front parking sensors	○	○
Twin, dual pipe exhaust system in chrome-plated stainless steel	●	X
Twin, dual pipe Sport exhaust system in chrome-plated stainless steel	X	●
Maserati GranTurismo car cover	○	○
19" V-Style alloy wheels - 7 spokes (8.5J x 19" front; 10.5J x 19" rear)	●	X
19" V-Style alloy wheels - 7 spokes in Grigio Mercury (8.5J x 19" front; 10.5J x 19" rear)	○	X
20" Birdcage design alloy wheels (8.5J x 20" front; 10.5J x 20" rear)	○	○
20" Birdcage design alloy wheels in Grigio Mercury (8.5J x 20" front; 10.5J x 20" rear)	○	○
20" Trident design alloy wheels (8.5J x 20" front; 10.5J x 20" rear)	X	●
20" Trident design alloy wheels in Grigio Mercury (8.5J x 20" front; 10.5J x 20" rear)	X	○

STANDARD ● OPTIONAL ○ NOT AVAILABLE X



Chromeline exterior trim



Side vents



Information Provided by:



Maserati script badge - rear



**INTERIOR**

**GRANTURISMO**

**GRANTURISMO S AUTOMATIC**

Aluminum door sill protectors with Maserati script	●	●
Instrument dials in Maserati Blue color with white graphics	●	●
Dashboard-mounted, Maserati-design clock	●	●
Three-spoke, multifunction, sports steering wheel	●	●
Maserati "Active Shifting" (shift paddles)	●	●
Maserati "Active Shifting" Trofeo design paddles	X	○
Sport mode setting via "Sport" button (affecting gear change, accelerator response, MSP system)	●	●
High lateral support power front seats, with separate head restraints - adjustments backrest, height, longitudinal, driver's seat lumbar	●	●
Front seats comfort pack - includes: driver's seat memories, seat heating - front, steering column with power tilt and telescopic adjustments	●	●
Trident logo embossed on head restraints - front and rear	●	●
Folding front armrest with illuminated storage compartment	●	●
Folding rear armrest	●	●
Front and rear double cup-holders	●	●
Side storage compartments for rear passengers	●	●
Rear clothes hook	●	●
Two air outlets in centre tunnel, rear	●	●
Aluminum sport pedals	X	○

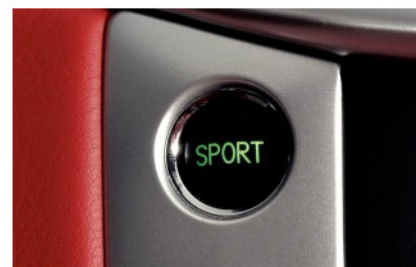
STANDARD ● OPTIONAL ○



Three-spoke, multifunction, leather sports steering wheel



Dashboard-mounted, Maserati-design clock



Sport mode setting via sport button



Front double cup-holders

**ELECTRONIC DEVICES**

**GRANTURISMO**

**GRANTURISMO S AUTOMATIC**

Electronic immobiliser	●	●
Alarm system (perimeter and volumetric sensing, anti-lift device, electronic immobiliser)	●	●
Remote key (on/off alarm system, lock/unlock doors, unlock boot lid)	●	●
Cruise control	●	●
HomeLink - Garage door opener	●	●
Dual zone automatic climate control with two rear air outlets in centre tunnel	●	●
Demist sensor	●	●
Maserati Multi Media System with 7" in dashboard screen - includes navigation system, RDS tuner, single CD player, 30GB hard disc drive, voice control	●	●
Aux-In plug	●	●
I-Pod interface	●	●
Bluetooth® + USB (recharging port)	●	●
Bose® Surround Sound System	●	●
Rain sensor	●	●

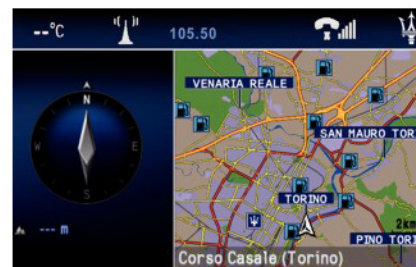
STANDARD ● OPTIONAL ○



Dual zone automatic climate control



Cruise control



Information Provided by:  
Maserati Multi Media System with 7" in dashboard screen



Bose® Surround Sound System



**UPHOLSTERY AND TRIMS**

**GRANTURISMO**

**GRANTURISMO S AUTOMATIC**

Poltrona Frau® leather upholstery	●	●
Dual-tone interior color	○	○
Stitching color upon request - steering wheel, gear knob, gear shift leather boot excluded	○	○
Titanium-look finish ("Smoked Quarz") on selected interior trims	●	●
Polished Wengè wood trim on selected interior trims	○	●
Rosewood trim on selected interior trims	●	○
Walnut Briarwood trim on selected interior trims	○	○
High gloss color for selected interior trim color range: Black Piano, Blue Laque, Rosso Sigillo, Bianco Ice, Giallo Decoro	○	○
Steering wheel, gear selector in colored leather	○	○
Steering wheel in wood trim and black leather - Polished Wengè, Rosewood, Walnut Briarwood, Black Piano	○	○
Steering wheel in wood trim and colored leather - Polished Wengè, Rosewood, Walnut Briarwood, Black Piano	○	○
Alcantara® headlining	○	○
Colored piping for floor mats upon request	○	○
Colored carpets upon request	○	○

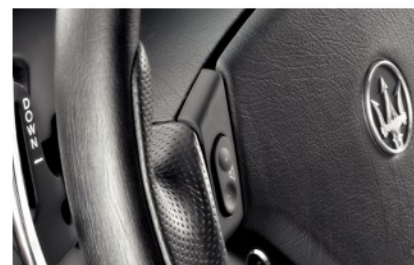
STANDARD ● OPTIONAL ○



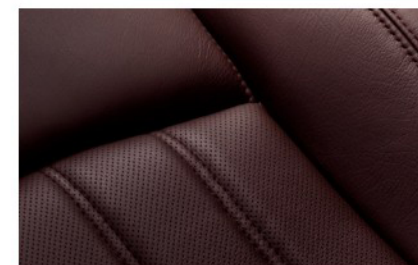
Alu Grey details



Wengè Polished wood trim

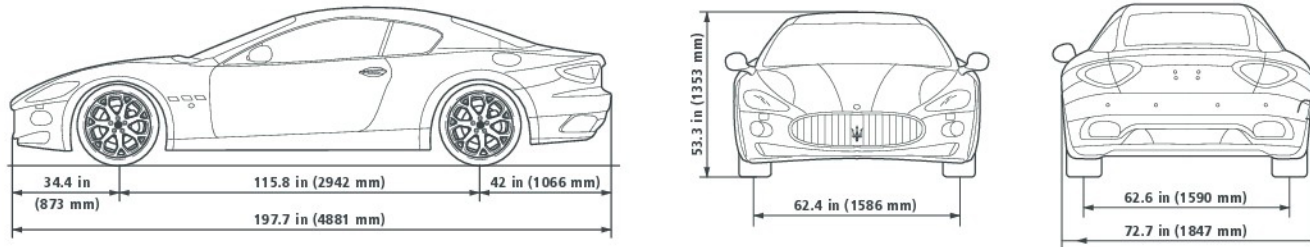


Steering wheel in black leather



Poltrona Frau® leather upholstery

**TECHNICAL SPECIFICATIONS**



	GRANTURISMO	GRANTURISMO S AUTOMATIC	DIMENSIONS AND WEIGHTS	
<b>ENGINE</b>				
Displacement	4.2 L (4.244 cm <sup>3</sup> )	4.7 L (4.691 cm <sup>3</sup> )	Length	192.2 in (4,881 mm)
Bore	3.62 in (92 mm)	3.7 in (94 mm)	Width (without side mirrors)	72.7 in (1,847 mm)
Stroke	3.14 in (79.8 mm)	3.33 in (84.5 mm)	Width (with side mirrors)	80.9 in (2,056 mm)
Compression ratio	11:1	11.25:1	Height	53.3 in (1,353 mm)
Max power output	405 hp (298 kW)	433 hp (323 kW)	Wheelbase	115.8 in (2,942 mm)
Max power output revs	7,100 rpm	7,000 rpm	Front track	62.4 in (1,586 mm)
Max torque output	339 lb-ft (460 Nm)	361 lb-ft (490 Nm)	Rear track	62.6 in (1,590 mm)
Max torque output revs	4,750 rpm	4,750 rpm	Front overhang	34.4 in (873 mm)
Max torque	7,250 rpm	7,200 rpm	Rear overhang	42 in (1,066 mm)
			Turning circle	35.1 ft (10.7 m)
<b>PERFORMANCE</b>			Trunk capacity	9.2 cu-ft (260 l)
Maximum speed	177 mph (285 km/h)	183 mph (295 km/h)	Fuel tank capacity	22.7 gal (86 l)
0 to 60mph acceleration	5.1 s	4.9 s	Curb weight	4,145 lb (1,880 kg)
Braking distance from 60 to 0 mph	114 ft (35 m)	114 ft (35 m)	Gross vehicle weight	4,962 lb (2,250 kg)
			Weight distribution	49% front; 51% rear

**MAINTENANCE**

First service at 12,500 miles or after two years of the vehicle's life and subsequently every 25,000 miles. Refer to owners manual for full scheduled maintenance.

**WARRANTY**

Transferable four year/50,000 mile new car limited warranty with 24/7 Roadside Assistance. Ask your local Maserati dealer for more details.





# 7. MASERATI PROGRAMS

ENHANCING THE OWNERSHIP EXPERIENCE.

**CAREFULLY BUILT AND METICULOUSLY TESTED.** Each Maserati is built in the historic Maserati factory complex in Viale Ciro Menotti in Modena, Italy. Over the last several years the factory has been completely renovated to help ensure the highest production standards and is now amongst the most advanced small series production facilities in the world, combining traditional hand-crafting techniques with cutting edge technology. Each new Maserati, after being thoroughly examined and tested in the engine running-in and diagnostic area where its torque and power output are verified, is put through its paces by our professional test-drivers. Excellence is a matter of pride at Maserati.

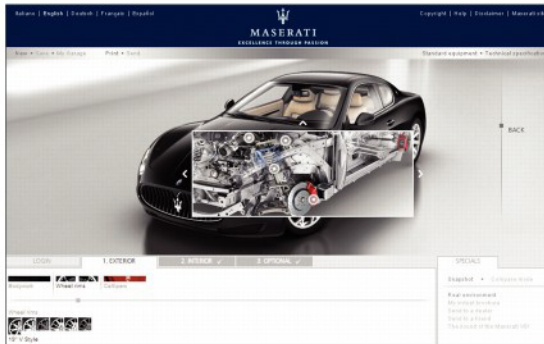
**4-YEAR LIMITED WARRANTY AND ROADSIDE ASSISTANCE.** Confident in its high performance automobiles, Maserati North America covers them with a transferable four year/50,000 mile new car limited warranty. Because daily use includes the risk of road hazards, Maserati North America includes Maserati Roadside Assistance on all new Maserati vehicles sold in the USA and Canada throughout the new car limited warranty period. Available 24/7 toll-free at +1 888 371 1802, the program provides transport to the nearest authorized Maserati dealership if the car cannot be made roadworthy by the responding technician. If overnight warranty repairs are necessary, limited rental reimbursement and travel assistance may also be provided through the program. Ask your local authorized Maserati dealer for more details. (Not currently available in Florida).

**CERTIFIED PRE-OWNED EXTENDED SERVICE COVERAGE.** Maserati Certified Pre-Owned Warranty coverage provides an additional 2 years or 50,000 miles to any balance of existing New-Car Warranty coverage that remains, for a total of 6 years or 100,000 miles. In addition, each Certified Pre-Owned Maserati is covered with Maserati Roadside Assistance and your Maserati Certified Pre-Owned Warranty can be transferred to subsequent owners, representing added value to your purchase. All 2007 model year and newer vehicles originally imported by Maserati North America, Inc., serviced in accordance with Maserati factory guidelines and conforming to Maserati North America, Inc. and Maserati SpA enrollment and inspection qualifications are eligible to participate in the Certified Pre-Owned program. Every Certified Pre-Owned Maserati graduates from an exhaustive test regimen performed exclusively by factory-trained technicians. For complete details of the terms and conditions, and eligible models, consult your nearest authorized Maserati dealer or visit [maseratipreowned.com](http://maseratipreowned.com)









## MASERATI FINANCIAL SERVICES

---

Maserati Financial Services offers the financing, leasing, and other products necessary to provide performance-minded Maserati customers with unprecedented results. We are passionate about providing the highest quality of financial services available to the Maserati network. Maserati Financial Services offers competitive retail financing for those customers who prefer the benefits of ownership at the end of their contract. With our retail financing program, customers will own their vehicles at the end of the contract and as an additional benefit, there are no mileage restrictions. Leasing allows you to experience all the benefits of the Trident marque with lower monthly payments. We offer a wide variety of closed-end leases from 24 to 60 months. The key to our leasing program is that we fully understand the allure and mystique of the Maserati brand and we appreciate how an automobile renowned for its beauty, engineering and sophisticated luxury can hold its value. Maserati Financial Services offers leasing programs that are as flexible as they are affordable.

## THE WEB AND CAR CONFIGURATOR

---

To discover all the ways in which the Maserati GranTurismo can be personalized, we have created an innovative and unique car configurator. It has been developed to bring your Maserati GranTurismo to life by giving you the chance to personalize many of the vehicle's features. The system has been enhanced with "X-ray" software to make the experience all the more enjoyable and to see inside the car and appreciate all its interior technological elements. Create your own Maserati GranTurismo at [configurator.maserati.com](http://configurator.maserati.com), or learn more about this new Maserati model at [maseratigranTurismo.com](http://maseratigranTurismo.com)

To browse the entire Maserati range, the services on offer, or simply to see how the company's heritage blends perfectly with modern day living, visit [maserati.com](http://maserati.com) or [maserati.com](http://maserati.com)



## NEWSLETTER

---

All owners registered on the site will receive the online Newsletter for regular updates on all the latest news and events. The Newsletter summarizes the latest news from the world of Maserati, highlighting the main events and focusing with greater detail on the most interesting topics. You can also read the newsletter by visiting the website [maseratimonthly.com](http://maseratimonthly.com)

## FACTORY TOUR

---

Discover how the Maserati cars are born, learn the secrets to their craftsmanship, fully understand their engineering and really become part of the Maserati family. The tour is by appointment only and reservations can be made at any Maserati dealership. For more information please contact us by writing to: [maseratiexperience@maserati.com](mailto:maseratiexperience@maserati.com)

## MASERATI EXPERIENCE

---

For those who truly wish to discover Modena, its culture, history and cuisine. The Maserati Experience program (“Maserati One Day” or “Maserati Deluxe” packages) introduces you first hand to the Maserati world: Modena, with its works of art, its history and its fine cuisine. You can tailor your Maserati Experience to your personal taste by combining a variety of activities:

- Panini Museum and/or Stanguellini car Museum visit
- Guided tour of a winery, with tasting of local wines
- Guided tour of the town
- Cooking school
- Guided tour of a traditional balsamic vinegar establishment, with tasting
- Day at the “Modena Golf & Country Club”

...and much, much more. For more information please contact us by writing to: [maseratiexperience@maserati.com](mailto:maseratiexperience@maserati.com)





*On joining the main Maserati Club you will receive a silver membership card bearing your personal information, and a welcome kit with a cap, a polo shirt, a pair of leather Maserati driver's gloves and a number of Club stickers.*

### MASERATI COLLECTION

---

Now you can reflect your car's timeless style and elegance with a completely updated collection of clothing and accessories. The Collection, conceived and produced in line with the Maserati philosophy of excellence and fine design, comprises six product lines:

- Pure for clothing
- Executive for accessories and leather goods
- Leisure for leisure items
- Gift for elegant gift ideas
- Passion for models and publications
- MC for the more sporty clothing and accessories line.

The exclusive Maserati Collection products are available from all official Maserati Dealers, from the just opened Maserati Store at the Maserati Headquarters in Modena and from the Maserati Showroom on Park Avenue at 55th Street in New York City. Call +1 212 593 2080 to place your order by phone or e-mail the Showroom at: [maseratishowroom@maseratiusa.com](mailto:maseratishowroom@maseratiusa.com). Items can also be purchased directly from your home, from the on-line Trident store [maseratistore.com](http://maseratistore.com).

### CUSTOMER EVENTS AND MASERATI CLUB

---

The owners of Maserati cars from every era can fully enjoy the pleasure of owning and driving a Trident sports car by taking part in a calendar of events exclusively for Maserati Club members. The Maserati Club provides the link between the past, present and future of the Modena constructor. The association is led by personalities who have made a fundamental contribution to the growth and promotion of Maserati in all eras, starting from the President, Maria Teresa de Filippis, the first woman F1 driver and today a proud supporter of the Trident. Becoming a Maserati Club member is simple, just like the joy of sharing a deep passion for Maserati cars.



## MASTER MASERATI DRIVING COURSES

---

A unique opportunity that allows clients and potential customers to experience the thrill of being behind the wheel of Maserati models with the support of a highly professional staff and the latest equipment. The Master Maserati Driving Courses are a terrific way to experience the race track under a supervised environment. The courses are designed to teach how to properly handle a Maserati while still pushing and controlling the powerful sports car to its limit. The Courses take place at the Varano de' Melegari Circuit, located near Parma, Italy (a few miles from the Maserati Headquarters), a circuit that puts technical skills to the test and is also equipped with special driving instruction features, under the technical direction of the former F1 driver Ivan Capelli and the constant supervision of a team of professional instructor-drivers.

Master Maserati courses include:

**MASTER GT:** A two-day all-inclusive package spent behind the wheel of the various Maserati models. A thrilling, intensive training course that introduces participants to a sequence of exciting dynamic phases. It includes driving sessions on the circuit with a variety of procedures (bend trajectory technique with instructor in the car, acquisition and analysis of telemetry data, driving with pace-car) and practice controlling the car in different simulated road surface conditions (quick direction changes, controlled skid and braking techniques).

**MASTER MASERATI RACING:** An intensive one-day course spent behind the wheel of the Trofeo and GranSport models, the Master Maserati Racing option takes the racing-driving techniques studied in the Master GT course to their highest level. The course, designed to provide an extremely professional service and cover the latest techniques, allows participants to test-drive the cars that compete in the Trofeo Championship on the track.

For more information and registration, please contact your nearest authorized Maserati dealer or: tel. +39 0525 55 11 38 | [info@mastergt.it](mailto:info@mastergt.it) | fax: +39 0525 55 11 40 | [maserati.us](http://maserati.us)

A close-up, low-angle shot of the Maserati logo on a silver car. The logo is a three-dimensional, chrome-plated script that reads "Maserati". It is mounted on a curved surface of the car's body, likely the front fender or hood. The lighting is dramatic, highlighting the metallic sheen and the depth of the letters. The background is a soft, out-of-focus grey.

Maserati

©2009 Maserati North America. All rights reserved. The illustrations and texts contained in this brochure are based on the information available at the time of printing and do not contain a description of specific characteristics of the car by the Manufacturer. Some models, equipment and accessories may not be available or may only become available after the car's launch on the market. Maserati reserves the right to modify colors, designs and technical features at any time and without forewarning. Contact your authorized Maserati Dealer for further details.



*GranTurismo*

*GranTurismo S*



MASERATI NORTH AMERICA, INC. · 250 SYLVAN AVENUE · ENGLEWOOD CLIFFS, NJ 07632

Information Provided by:  
WWW.MASERATI.US · 1-877-MY MASERATI

