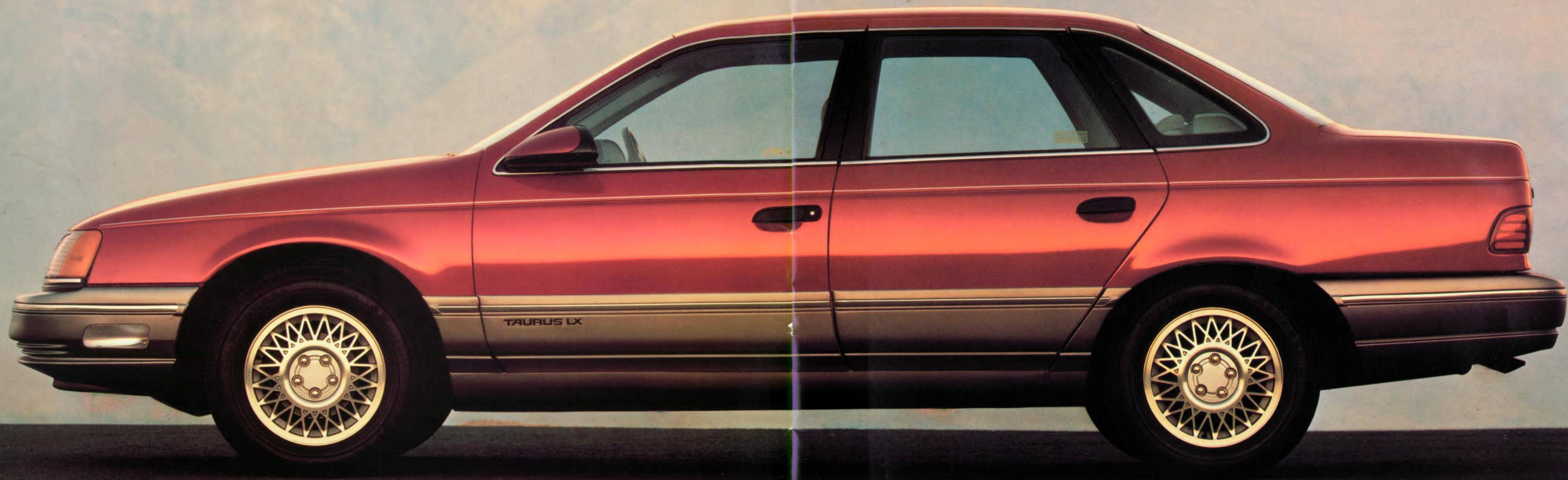


1990 FORD TAURUS





FORD TAURUS LX

A car which sets the standards by which others in its class are judged is properly called a breakthrough car. And judging from the accolades and the popularity its design leadership has earned, Ford Taurus aptly fits the definition.

Taurus was designed and engineered with a "best-in-class" philosophy. Nearly four hundred of

To the world-class Taurus design, the LX model brings a wealth of luxurious comfort and convenience.

the best features of many of the world's finest cars were evaluated with the intent of equalling or surpassing as many as possible.

Striving to improve upon Taurus' design continues, with added features for 1990 such as the standard driver air bag supplemental restraint system and the optional 4-wheel power disc anti-lock brake system (ABS).

The Taurus displayed above is the luxurious LX, one model in a

series of four that includes as well the standard L, the handsomely equipped GL, and the SHO high-performance sports sedan.

To Taurus' world-class, award-winning design, the LX model brings a wealth of comfort and convenience features, presented here and also on page 7.

Responsive multi-port fuel-injected V-6 power is standard. And for Taurus LX drivers there's the variable power-assist, speed-

sensitive steering system. This computer-controlled system provides more power assist for a low-speed maneuver like parking, and a progressively firmer feel as speed increases.

Another LX mark is the lower bodyside cladding. It's designed to help protect against stone pecking, and is flared at the bottom to reduce wind turbulence, enhancing the air flow efficiency of this highly aerodynamic luxury road car.

▲ *Taurus LX Sedan in Curran Red Clearcoat Metallic with Preferred Equipment Package 208A. Some equipment shown is optional.*

THE TAURUS INTERIOR

The roomy, comfortable Taurus can easily serve all the practical needs of a family. And from the driver's special point of view, Taurus is designed to satisfy the emotional needs of those who often drive for the enjoyment of it.

COMFORTABLE PASSENGER CAR

The mid-size Taurus has a passenger volume index of 100 cu. ft. There's plenty of head, shoulder, hip and leg room for six adults (five in SHO). Space, however, is only part of the overall picture.

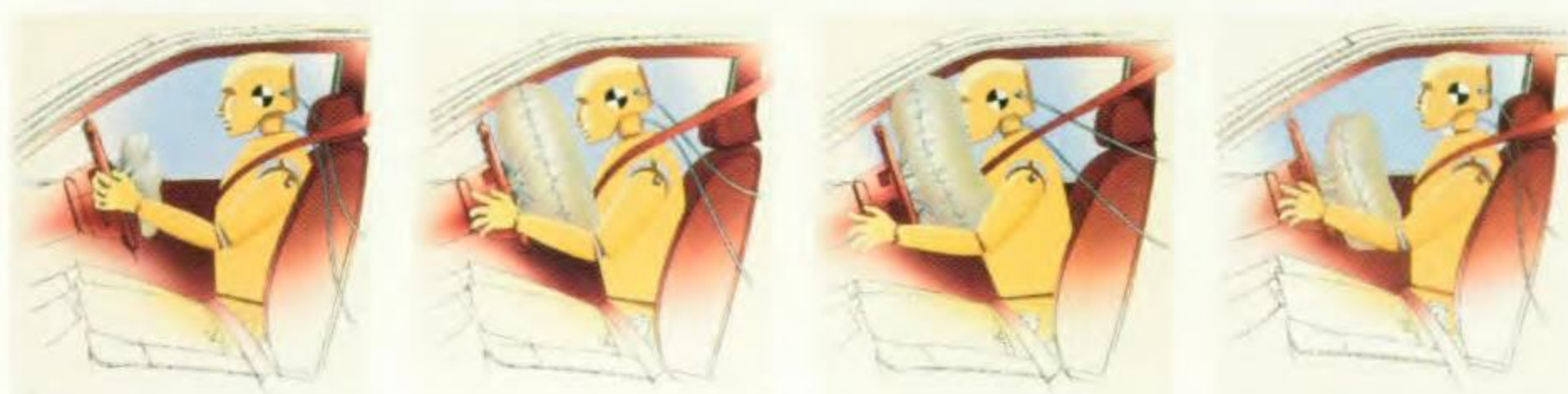
The front seats underwent more than 100,000 miles of actual on-road development to make them exceptionally comfortable, especially on long trips. Their 6-spring design helps make them firm and supportive. The high-density foam pads distribute contact pressure evenly with no hard or soft spots which can cause discomfort.

In Taurus, the needs of the rear passengers get special attention. The seat is raised slightly to provide better frontal visibility. There's ample spacing between the front seat tracks and a slanted floor for foot room. Rear occupants even have their own heat ducts.

ERGONOMIC DRIVER'S CAR

For all it provides in the way of roominess and comfort for up to six, Taurus is a driver's car.

The seating is designed to minimize fatigue and provide firm lateral support. Placement of each control is determined by length of reach and frequency of use.



▲ Top: Electronic instrument cluster. Optional in Taurus GL and LX models. See page 20 for explanation.

▲ Center left: Power door locks. Standard in LX and SHO; optional in GL.

▲ Center right: Coin holder (shown) and cup trays are part of Taurus' redesigned instrument panel.

▲ Bottom: The new driver air bag supplemental restraint system, standard in all Taurus models.

► Taurus LX instrument panel in Curren Red with Preferred Equipment Package 208A. Some equipment shown is optional.

The amount of effort required to operate the controls is also considered as part of the entire ergonomic equation. So are legibility of instrumentation, hand/eye coordination, field of vision, and the many other factors that comprise the science of ergonomics.

DRIVER AIR BAG SUPPLEMENTAL RESTRAINT SYSTEM

Ford Taurus for 1990 features a driver air bag supplemental restraint system.

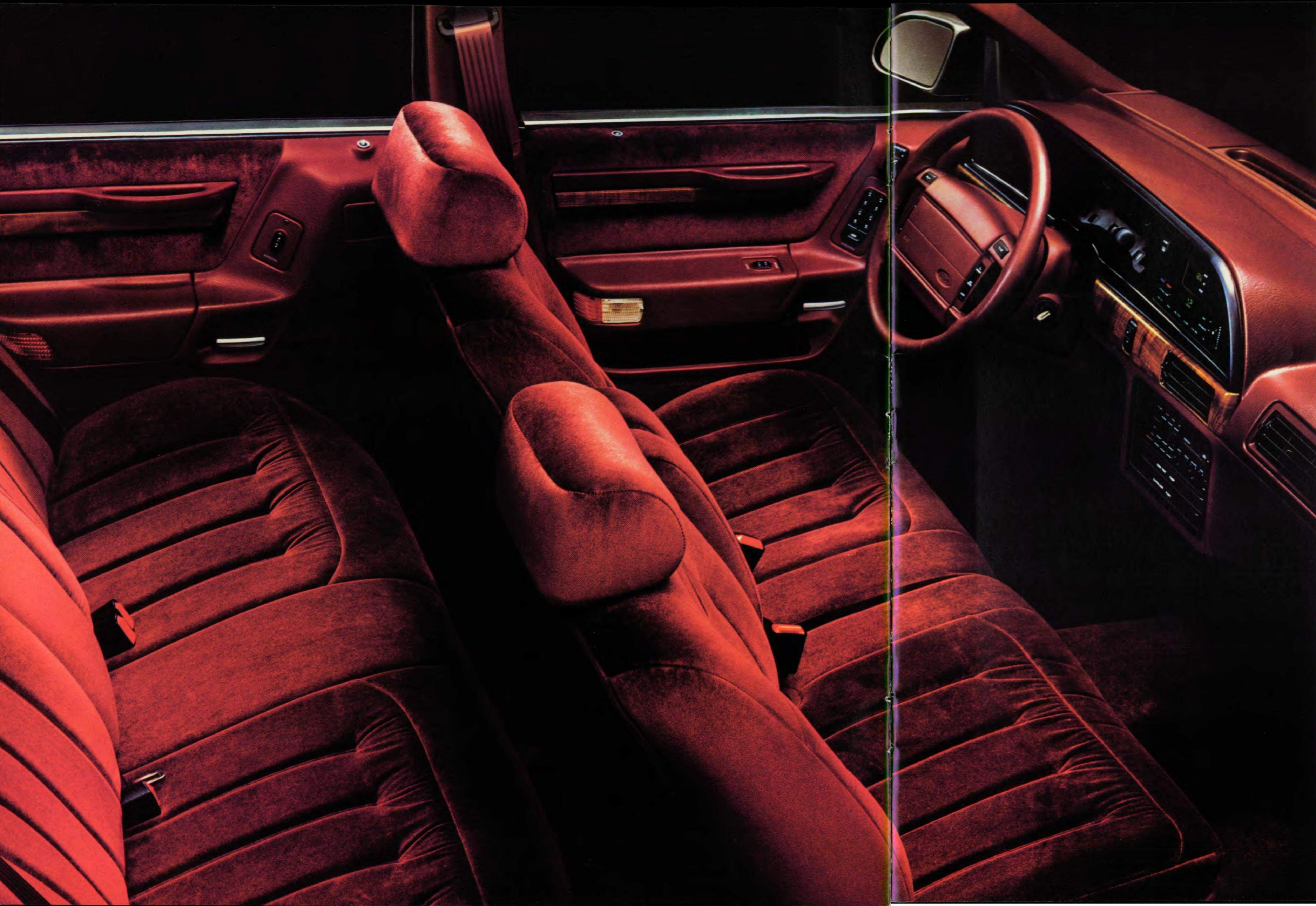
The air bag, located in a module in the center of the steering wheel, is designed to activate in the event of a moderate to serious frontal impact roughly equivalent to striking a parked car of similar size at 28 miles-per-hour.

From initial impact to full deployment, the air bag inflates in less than 1/10 of a second. It also begins to deflate within a fraction of a second.

The air bag is designed for one-time use. Once used, the module must be replaced by a qualified service technician. Replacement is normally covered by the insurance company as part of the collision repair. Many insurance companies are offering a discount on the medical premium for owners of air bag-equipped cars.

It is important to remember that the air bag is intended to supplement, not replace, the driver's lap and shoulder belt system, which provides protection in all types of impacts. Together, the air bag and safety belts comprise one of the best occupant restraint systems available today.





Start with the appointments and the world-class design features of the standard Taurus interior, add the amenities of a luxury road car, and the result is Taurus LX.

The reclining split bench seats are equipped with power lumbar supports and are upholstered in a special luxury cloth. For the driver's convenience, seat adjustment is power-assisted six ways: fore/aft, up/down, tilt forward/back.

Taurus LX offers the amenities of a world-class luxury road car.

The instrument cluster provides a tachometer plus alert lights for door-ajar, low washer fluid, low oil level, low fuel, and headlamp-out.

And for the comfort of everyone, manual-control air conditioning is standard.

Taurus LX also includes: Front cornering lamps. Power side windows and power door locks. Remote-control fuel door and decklid (sedan) releases. Dual illuminated visor mirrors with secondary sun visors for protection from bright sunlight. And a courtesy light package with headlamps-on reminder.

Luxury-level sound insulation is standard also, for the extra measure of quiet comfort expected in a luxury road car.



▲ Taurus LX rear seating in Currant Red.

◀ Taurus LX interior in Currant Red with Preferred Equipment Package 208A. Some equipment shown is optional.

FORD TAURUS L AND GL

Since its introduction, the award-winning Ford Taurus has brought world-class design features to hundreds of thousands of sedan and wagon drivers all across America. Convincing proof that *world-class design* and *affordability* can be attributes of a single automobile.

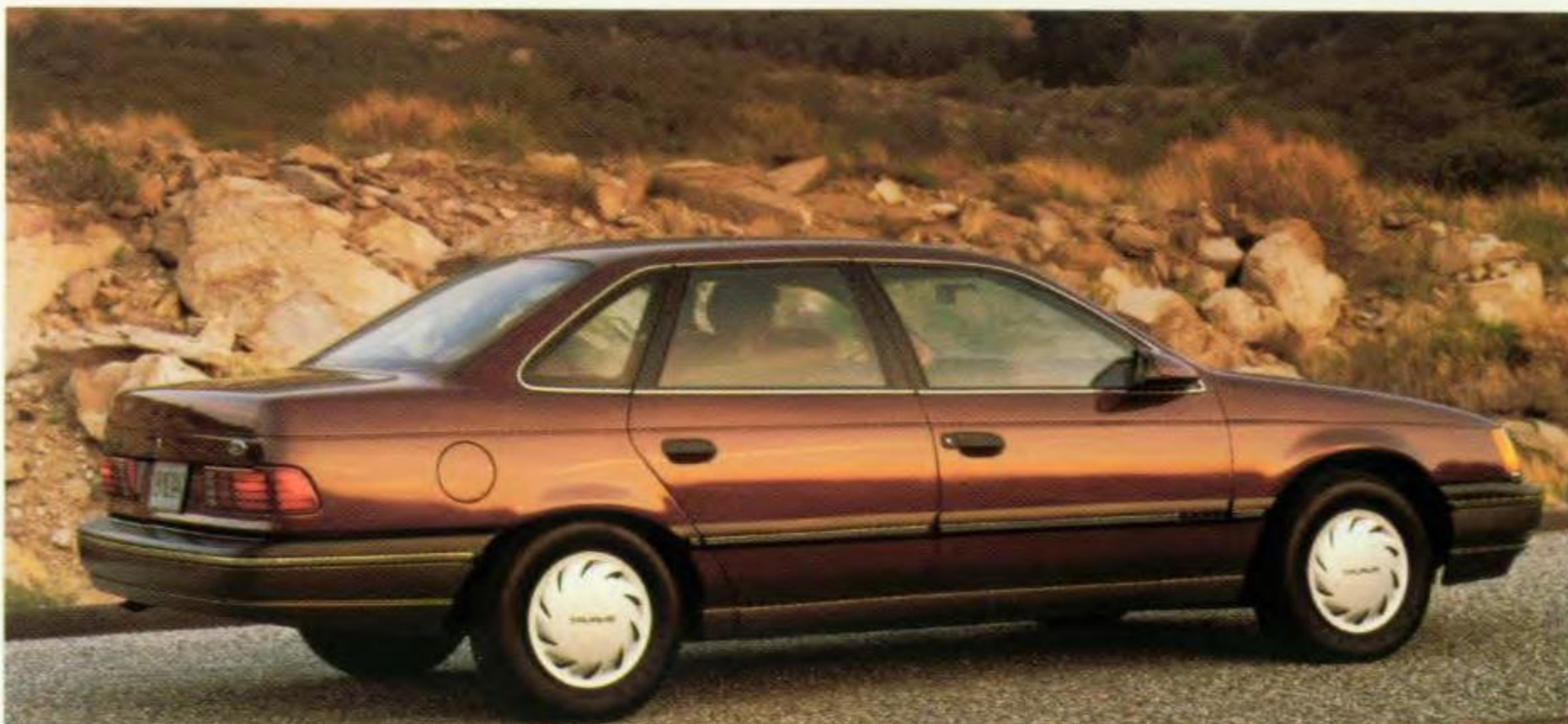
Taurus' world-class design features alone would make the L and GL models outstanding values. But they're just a few of the many features of these popular mid-size sedans and wagons.

Taurus is convincing proof that world-class design and affordability can be attributes of a single automobile.

Taurus L and GL are equipped with dual electric remote outside mirrors, halogen headlamps, all-season steel-belted radial tires, power steering and brakes.

Standard also are a tilt steering column, reclining split bench front seats, AM/FM stereo sound system, trip odometer, electronic digital clock, variable-speed interval windshield wipers, tinted glass, the newly available driver-side air bag supplemental restraint system, and much more.

To this list the Taurus GL model adds 4-way adjustable headrests and seat back map pockets, dual visor mirrors with driver-side secondary visor, and an elasticized cargo tie-down net. Plus a fold-down center armrest, integral



headrests, and a rear window ledge storage bin in the rear compartment of the sedan model.

Perhaps the best Taurus value of all is the Taurus GL with Preferred Equipment Package 204A. Air conditioning, speed control, power windows and door locks, power driver's seat, cassette tape player and others are included. These options (see page 20) come with a discount when compared with the options purchased separately.

The Taurus L and GL series also offers a wide range of performance choices: the 2.5L EFI I-4, standard in the sedan; the 3.0L EFI V-6, standard in the wagon, optional in the sedan; and the 3.8L EFI V-6, optional in GL sedan and wagon. And now available for the GL sedan with 3.0L or 3.8L V-6 is the optional anti-lock brake system with 4-wheel power disc brakes.

◀ Top: Taurus GL instrument panel in Black with Preferred Equipment Package 204A.

◀ Center: Taurus GL interior in Black with Preferred Equipment Package 204A.

◀ Bottom: Taurus L Sedan in Medium Woodrose Clearcoat Metallic with Preferred Equipment Package 201A.

▶ Taurus GL Sedan in Twilight Blue Clearcoat Metallic with Preferred Equipment Package 204A and Taurus GL Wagon in Oxford White with Preferred Equipment Package 204A.

Some equipment shown is optional.





FORD TAURUS WAGON

Design a mid-size wagon that is both highly aerodynamic and spacious. And give it also the ride and handling manners of a fine touring sedan. This is exactly what Ford has done—and with remarkable success—in the Taurus wagon.

Taurus wagon is the product of careful thinking that examined every design detail affecting cargo space, even the components of the rear suspension. The independent rear system (detailed on page 12) is specially designed to maximize usable cargo space

(81.1 cu. ft.) without compromising ride comfort and handling.

Taurus is also outstanding in the special wagon features it provides, such as the versatile 60/40 split second seat, the convenient two-way liftgate, and the aero-design roof luggage rack. The carpeted load floor has built-in cargo tie-downs. In wagons with the mini spare tire, a lockable under-floor storage compartment is also included.

And Taurus wagon has standard multi-port fuel-injected V-6 power: the 3.0L V-6 in Taurus L and GL, the high-torque 3.8L V-6 in Taurus LX.



▲ The 60/40 split second seat folds down flat for maximum cargo-carrying utility. Depending on which seat back is lowered, there's room for one or two passengers.



▲ Taurus wagon provides additional cargo space in a convenient lockable under-floor storage compartment (except with optional conventional spare tire).



▲ For families, there's the optional rear facing third seat—just right for two children.



▲ Taurus LX wagon in Crystal Blue Clearcoat Metallic with Preferred Equipment Package 208A. Some equipment shown is optional.

◀ The standard two-way liftgate allows cargo to be loaded with either just the window or the entire liftgate raised.

TAURUS L, GL, LX ENGINEERING

The customer-driven "best-in-class" philosophy that created Ford Taurus focuses closely on everything that affects the quality of the driving experience—from the feel of a single operating control to the performance of the engine and the ride of the suspension system.

TAURUS ENGINES

The standard engine that powers the Taurus L and GL sedans is a 2.5L I-4 with electronic fuel injection, overhead valves (OHV) and high-swirl combustion (HSC) design. Putting out 130 lbs.-ft./torque at 2600 rpm, the 2.5L is engineered to deliver responsive acceleration at the lower end of the performance curve.

Powerful low-end performance, preferred by many drivers, is also a main feature of the 3.0L V-6 engine. It has multi-port electronic fuel injection, overhead valves, and 12-in. air intake runners that are carefully tuned to balance high-end power and low-end torque. The 3.0L generates 80 percent of its 160 lbs.-ft./torque at 1000 rpm.

More powerful yet is the 3.8L overhead-valve V-6 engine that reaches its peak 215 lbs.-ft./torque at just 2200 rpm. The 3.8L features a sequential multi-port electronic fuel injection system and a tuned air intake manifold. It also has a special counter-rotating balance shaft which helps control vibration, contributing to the engine's smooth performance.

Every Taurus powerplant is equipped with Ford's EEC-IV computer. Fuel-air mixture, ignition tim-

ing and numerous other engine functions are precisely controlled by this highly sophisticated system. EEC-IV instantaneously "fine tunes" the operation of the engine to the requirements of the moment.

TAURUS SUSPENSIONS

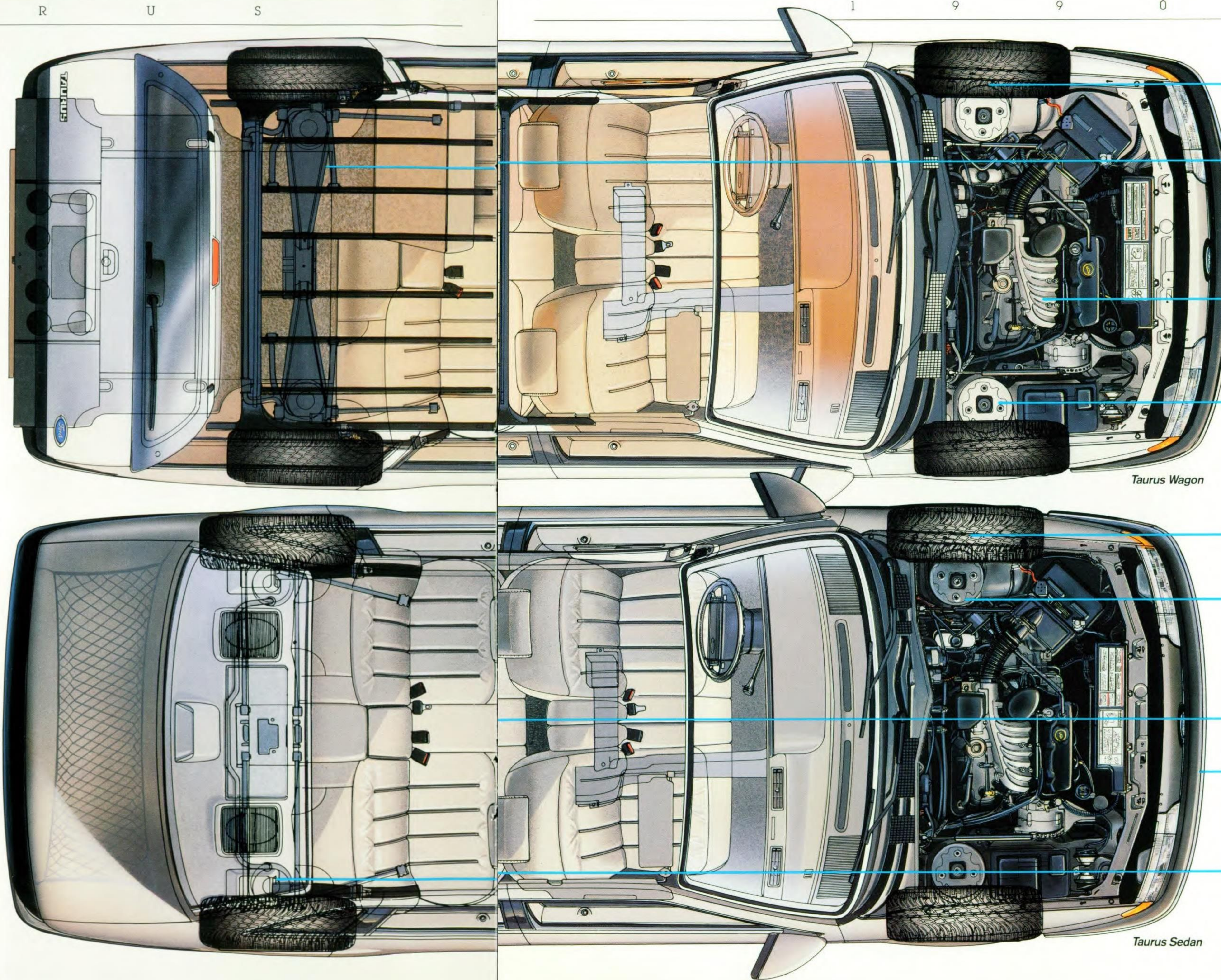
Ford Taurus sedan and wagon models are engineered with a 4-wheel independent suspension system.

The Taurus sedan features the highly efficient MacPherson spring-over-strut design at the front and the rear. It's tuned to deliver precise handling balance while also providing the kind of smooth ride quality most drivers are accustomed to.

The struts are nitrogen gas-pressurized to maintain consistent hydraulic fluid pressure. The result is a smooth and controlled ride, especially over rough road surfaces.

While sharing the sedan's MacPherson strut front suspension system, the Taurus wagon has a "short/long arm" (SLA) independent rear suspension designed to satisfy its special space and load requirements.

The SLA setup uses separate springs and shock absorbers mounted on lower control A-arms to allow for a lower and wider load floor and more cargo space. And equipped with components such as variable-rate coil springs, gas-pressurized shocks and stabilizer bar, Taurus wagon's independent rear suspension provides sedan-like ride smoothness and handling, whether it's supporting a full cargo load or none at all.



◀ Front-wheel drive places the weight of the engine and transaxle over the driving wheels for traction.

◀ Independent rear suspension with gas-pressurized shock absorbers and stabilizer bar in Taurus wagon incorporates a "short/long arm" (SLA) setup designed to maximize usable cargo space and provide sedan-like ride and quality and handling.

◀ Taurus engines are equipped with electronic fuel injection (multi-port type with V-6 engines) and Ford's EEC-IV computer.

◀ Front suspension system in sedan and wagon models is the MacPherson strut design with gas-pressurized struts and stabilizer bar. Front end alignment needs no periodic adjustment.

◀ P-metric steel-belted radial tires feature all-season tread for added traction in all weather conditions.

◀ Power rack-and-pinion steering features a 15.25:1 steering gear ratio for quick responsiveness. A variable power-assist, speed-sensitive system is optional in Taurus LX.

◀ Front-wheel drive eliminates the under-floor drive-shaft for added footroom.

◀ Resilient 5-mph polycarbonate bumpers help provide protection and also contribute to Taurus' excellent aerodynamics.

◀ Independent rear suspension in the Taurus sedan is the MacPherson strut design with gas-pressurized struts. V-6-powered models have a stabilizer bar.

Taurus Wagon

Taurus Sedan

CUSTOMER-DRIVEN DESIGN

Discerning automotive critics know that while the whole may be greater than the sum of the parts, it's the fine points of design and engineering details, judged on their individual merits, that separate outstanding cars from the ordinary.

Ford Taurus made the *Car and Driver* list of "Ten Best Cars" four years in a row.

Ford designers and engineers took the same critical approach, from the customer's point of view, when they created Taurus. They examined the fine points of numerous functional features before selecting and assembling their best for Taurus.

And the critics from *Car and Driver* magazine, having recognized these customer-driven efforts, placed Taurus on their list of "Ten Best Cars" four years in a row (1986 to 1989).

Consider, for example, just a few of the many details of Taurus' aerodynamic design. The fenders curve into the low hood line to reduce frontal area and lower wind resistance. The polycarbonate bumpers are shaped to help manage the flow of air around and

under the car. A technique known as "shingling"—merging the doors into the roof line—conceals the drip rails which are a source of drag on the car.

How Taurus' design works is every bit as important as how it looks. And it works, remarkably

well, to help move the car smoothly and efficiently through the air and to manage the air flow for reduced wind noise and better handling.

The same careful attention to details can be seen inside Taurus: the well-constructed, contoured seating; the ergonomically designed instrumentation and controls; the spacious comfort for passengers and other features presented on page 4.

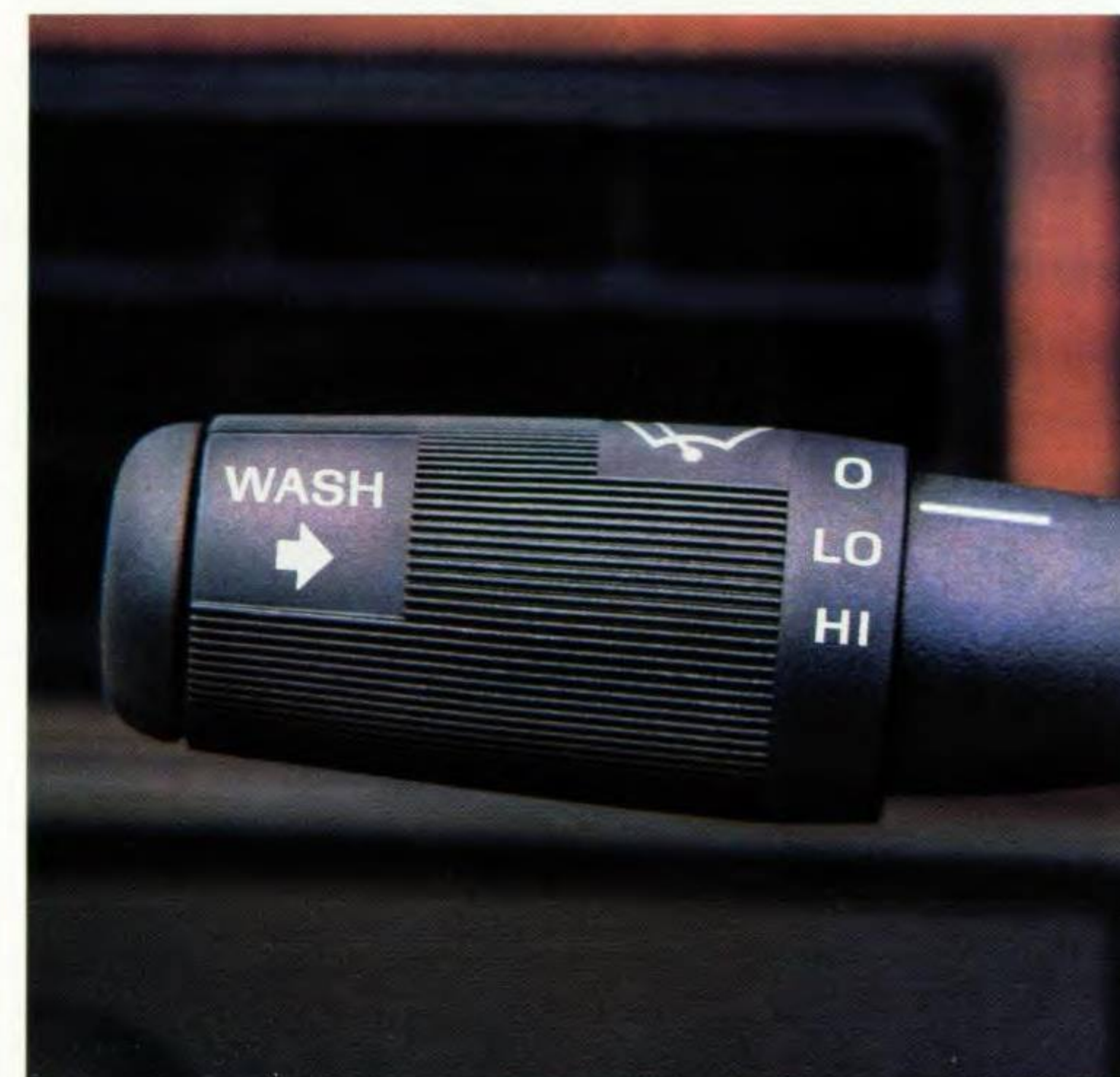
And, of course, there is Taurus' advanced engineering. Which is even more impressive with the addition of the new standard driver air bag supplemental restraint system.

Also new in Taurus for 1990 is the computer-controlled power 4-wheel disc anti-lock brake system (ABS)—optional in V-6-powered Taurus GL and LX sedans and standard in Taurus SHO.

ABS prevents braking-induced wheel lock-up by modulating the hydraulic pressure to each wheel up to 10 times per second. When impending lock-up is detected, the brakes are applied and released repeatedly in much the same way as a professional driver "pumps" the brakes, only a great deal faster.



▲ Computer-controlled anti-lock brake technology, coupled with 4-wheel power disc brakes, is optional in V-6-powered GL and LX sedans and standard in SHO.



◀ The optional Insta-Clear® heated windshield can remove 1/10 of an inch of frost at 0 degrees Fahrenheit in just two to three minutes.

◀ Six-way power driver seat adjustment (forward/back, up/down, tilt forward/back) is standard in LX and SHO; optional in L and GL. Six-way power for the passenger seat is available. Lockable remote fuel door and decklid/liftgate releases are standard in LX and SHO; optional in L and GL.

◀ Taurus sedan's deep-well trunk has 17 cu. ft. of space, the result in part of a rear suspension design that positions the strut towers as far outboard and as low as possible. The elasticized cargo tie-down net (shown) is standard in GL, LX and SHO models.

◀ Headlamp and heating/cooling controls have a rotary-type design that is sized and shaped for easy identification and touch. The new headlamp switch is illuminated.

◀ The resilient polycarbonate bumpers are shaped to help manage the flow of air around and under the car.

◀ At the driver's fingertips are controls for turn signals, wipers/washers, high beams, and flash-to-pass feature. Interval wipers are standard in all models.



FORD TAURUS SHO

Powered by its port fuel-injected 24-valve V-6 and equipped with its sport-tuned handling suspension and 4-wheel anti-lock disc brakes, the Taurus SHO (Super High Output) travels easily and confidently in the world of sophisticated high-performance sport sedans.

Displacing 3.0 liters and putting out 220 hp @ 6200 rpm, the SHO engine has one of the highest ratios of power to displacement (73.6 hp per liter) among normally aspirated engines. And it generates 200 lbs.-ft./torque @ 4800 rpm for responsive low- and mid-range acceleration.

Each cylinder of the SHO V-6 has two 35mm intake and two 30mm

exhaust valves promoting high-flow/velocity breathing and rapid-burn combustion. Quad high-lift overhead camshafts—two for each bank of cylinders—contribute as well to the engine's super high-output performance.

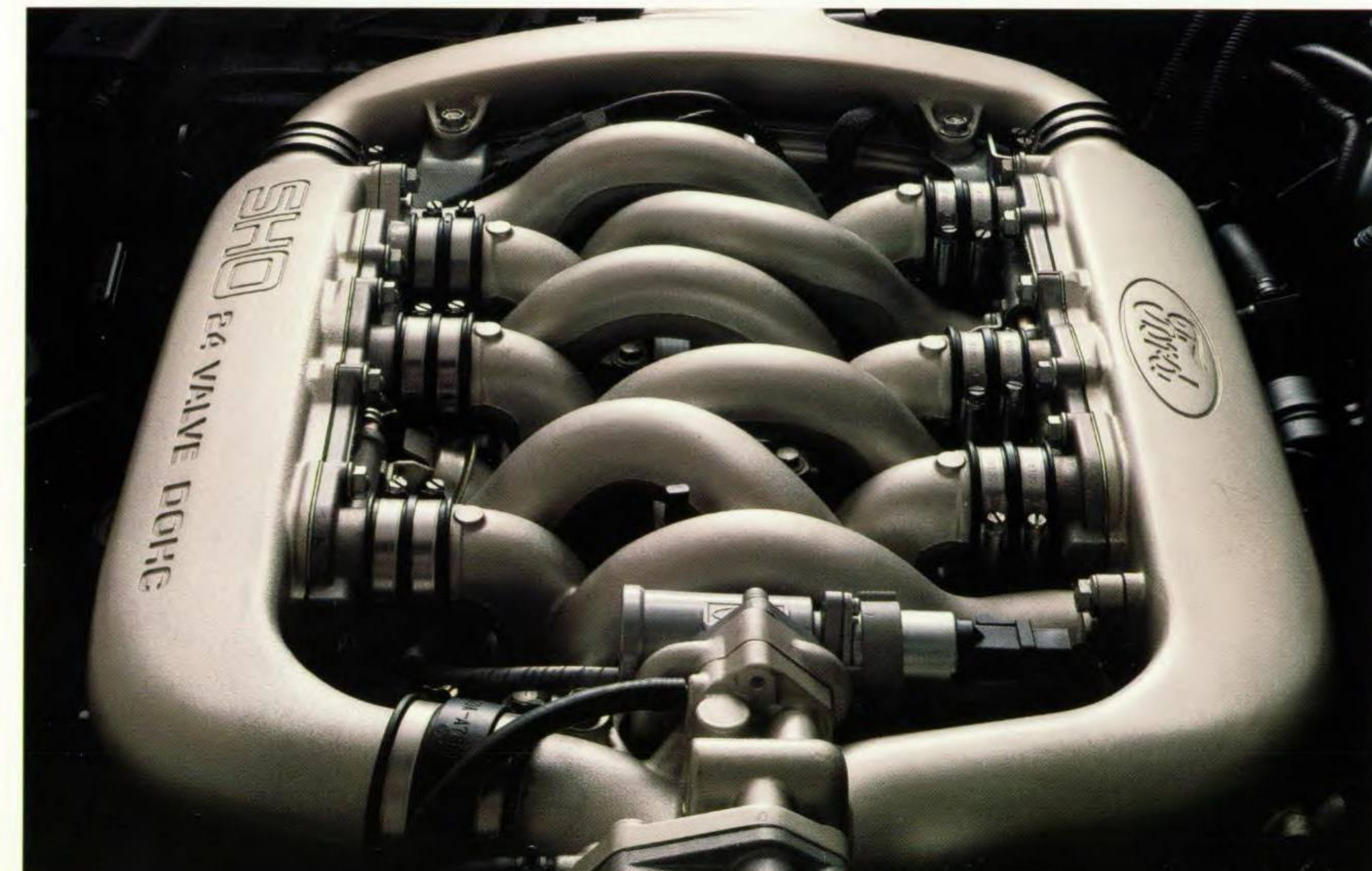
The intake manifold incorporates a dual plenum chamber design with 12 runners. Below 4000 rpm, the engine takes in air through six long small-diameter runners that are tuned for low-rpm breathing. Above 4000 rpm, where the engine needs more air, butterfly valves open to allow added air intake through six short large-bore runners.

In a world-class sport sedan, power output is only half of the performance equation. Handling the

forces of cornering and braking is the other half.

Putting the power of 220 horses under the hood of the front-driving SHO called for modifications in suspension tuning. Accordingly, the spring rates and the diameter of the stabilizers were increased to reduce vertical motions and body roll. And the front trailing and lateral links got stiffer bushings to reduce fore/aft wheel motions, as did the rear lateral links to create toe-in during hard cornering.

To complement the sophistication of this 4-wheel independent handling suspension, Taurus SHO's 4-wheel power disc brakes now possess the world-class stopping capability of the computer-controlled anti-lock brake system.



▲ Taurus SHO in Oxford White with Preferred Equipment Package 211A. Some equipment shown is optional.

◀ The 3.0L SHO (Super High Output) V-6 features 24 valves (four per cylinder), quad overhead cams (two per cylinder bank), an air intake manifold with dual plenum chamber design, a tuned dual exhaust system, and a sequential multi-port electronic fuel-injection system governed by Ford's EEC-IV engine control computer.

Taurus SHO is amply equipped in every respect to engage anyone in the full measure of driving enjoyment this world-class sports sedan brings to the road.

SPORT SEDAN FEATURES

The power and torque of the 3.0L DOHC 24-valve V-6 are transmitted to Taurus SHO's specially designed P215/65R15 95V Good-year Eagle GT+4 tires through a 5-speed manual gearbox.

The shifter sits in a multi-function console between the ergonomic reclining bucket seats, which have 4-way adjustable headrests, adjustable lumbar and side bolster supports. The driver's seat has 6-way power adjustment as well.

The new SHO instrument cluster is special, too. It has an 8000-rpm tach. Plus diagnostic alert lights for low oil level, low engine coolant, low washer fluid, door ajar, and headlamp out.

LUXURY-LEVEL COMFORTS

Taurus SHO's extensive standard equipment list includes manual-control air conditioning, a leather-wrapped steering wheel, speed control, courtesy light group, remote fuel door and decklid releases, power side windows and door locks, and more.

And in Taurus SHO's Preferred Equipment Packages are the auto-lamp and illuminated entry systems. The optional High-Level Audio System is included as well, to which can be added the outstanding performance and quality of the Ford JBL Audio System. Also available is a new digital audio disc player.



▲ Taurus SHO has a standard diagnostic instrument cluster with 8000-rpm tachometer.



▲ Taurus SHO in Electric Red Clearcoat Metallic with Preferred Equipment Package 211A. Some equipment shown is optional.

▶ Taurus SHO interior in Black with Preferred Equipment Package 211A. Some equipment shown, such as the leather seating surfaces, is optional.



PREFERRED EQUIPMENT PACKAGES AND OPTIONS

Preferred Equipment Packages make it easy to order a well-equipped Ford Taurus. Simply select the package with the features you want from the chart on page 21. Listed also are options available separately. Following are descriptions of features which may be of interest to you.

High-Level Audio System features electronic volume control; separate power control; pop-out controls for bass, treble, balance and fade; motorized cassette tape eject; memory for six AM and 12 FM stations; FM muting; bi-directional seek/scan tuning for radio; automatic music search using seek and scan for cassette tape; auto-reverse cassette player; AM stereo reception—C-Quam® encoded; Dolby® B noise reduction for tape and DNR™ for radio; automatic metal/CrO₂ tape equalization; 60 watts RMS continuous power; six premium speakers and power amplifier/booster.

Ford JBL Audio System is available in sedan models to create a complete sound package of ultra high performance. The system is bi-amplified and features active crossovers, custom equalization, electronic limiting, and includes eight JBL drivers in four locations. The bi-amplification is with two amplifiers producing a total of 145 watts of power.

Audio Digital Disc Player, a new option for 1990, provides outstanding clarity and a wide dynamic range. It includes a locking opening that prevents the accidental loading of a second disc, auto-

matic and manual search modes, compression, and a random play feature.

Electronic Instrument Cluster, a comprehensive driver-information center, features electronic digital speedometer/odometer; electronic tachometer; electronic fuel and temperature gauges; English/metric conversion functions; a fuel computer that calculates trip distance, instantaneous economy, average economy, distance to empty, fuel remaining, and low fuel alert. Also, the System Scanner alerts you to any of the following conditions: low oil level, door ajar, headlamp out, taillamp out, and low washer fluid.

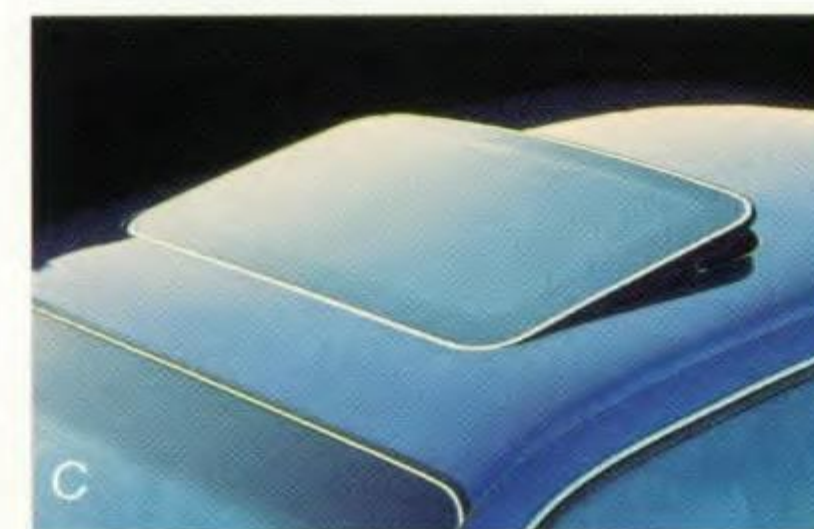
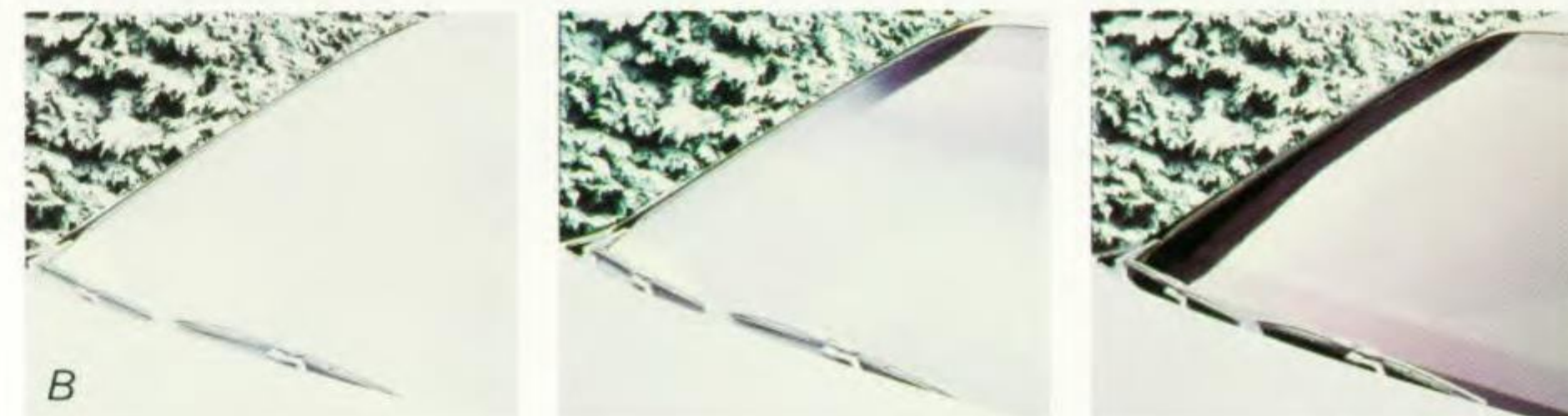
Electronic Climate Control Air Conditioning provides automatic temperature control, digital display of both inside and outside temperatures, sunload compensation sensor, electronic push-button controls for desired temperature and mode selection, full manual override capability for blower speed and mode selection, and variable rotary blower speed control.

Insta-Clear® Heated Windshield, available on Taurus models with V-6 engine, is capable of removing 1/10 of an inch of frost at 0 degrees Fahrenheit in just two to three minutes.

C-Quam® is a registered trademark of Motorola, Inc.

Dolby® is a registered trademark of Dolby Laboratories Licensing Corp.

DNR™ is a trademark of National Semiconductor Corp.



(A) High-level audio system. (B) Insta-Clear® heated windshield.

(C) Power moonroof. (D) Fold-out picnic table (wagon model only).

(E) Deluxe wheel cover (std. with L and GL), Finned wheel cover (std. with LX), Cast aluminum wheel, Styled road wheel, and Cast aluminum wheel (std. with SHO).

PREFERRED EQUIPMENT PACKAGES (Package contents are subject to change) ■ = Included in package S = Standard 0 = Optional	L		GL		LX		SHO	
	201A	202A	204A	206A	207A	208A	211A	212A
2.5L I-4/3-speed automatic (sedan)	S	S	S					
3.0L V-6/4-speed automatic (sedan)	0	0	0	S	S			
3.0L V-6/4-speed automatic (wagon)	S	S	S					
3.8L V-6/4-speed automatic (sedan)		0	0	0	0	S		
3.8L V-6/4-speed automatic (wagon)		0	0	S	S	S		
3.0L DOHC 24-valve V-6/5-speed manual							S	S
Manual air conditioning	0	0	■	S	S		S	
Speed control	0	0	■	0	■	■	S	S
Remote fuel door and decklid releases	0	0	■	S	S	S	S	S
Light group (1)	0	0	■	S	S	S	S	S
Rear window defroster	0	0	■	0	■	■	S	S
Paint stripe (2)		0	■	0	■	■		
Power door locks	0	0	■	S	S	S	S	S
Electronic AM/FM stereo search radio/cassette tape player (3)	0	0	■	0	■			
6-way power driver seat adjustment	0	0	■	S	S		S	
Finned wheel covers (on 14" tires)	0	0	■	S				
Power side windows	0	0	■	S	S	S	S	S
Cast aluminum wheels (requires 15" tires) (4)		0	0	0	■	■	S	S
Autolamp system (5)		0	0	0	■	■	■*	■
Floor mats, front and rear	0	0	0	0	■	■	■*	■
Illuminated entry system (6)		0	0	0	■	■	■*	■
Premium sound system (7)		0	0	0	■			
Leather-wrapped steering wheel	0	0	0	0	■	■	S	S
Electronic climate control air conditioning (see page 20)		0	0	0	0	■	0	■
Anti-lock brake system with 4-wheel disc brakes		0	0	0	0	■	S	S
Variable power-assist, speed-sensitive steering				0	0	■		
High-level audio system (see page 20) (3)		0	0	0	0	■	■*	■
Electronic instrument cluster (see page 20)		0	0	0	0	■		
Keyless entry system (8)			0	0	0	■	0	■
Power radio antenna		0	0	0	0	■	0	■
Ford JBL audio system (see page 20)		0	0	0	0	0	0	■
6-way power dual control seats		0	0	0	0	■	0	■
Leather seating surfaces		0	0	0	0	0	0	■
Power moonroof			0	0	0	0	0	■
Other options								
Heavy-duty battery (for 3.0L engine)	0	0	0	0	0			
Cargo area cover, window-shade type (wagon)	0	0	0	0	0	0		
Cornering lamps		0	0	S	S	S	S	S
Engine block immersion heater	0	0	0	0	0	0	0	0
18.6-gallon extended-range fuel tank	0	0	0	0	0	■	S	S
Diagnostic instrument cluster (9)		0	0	S	S		S	S
Fold-out picnic table (wagon)	0	0	0	0	0	0		
Dual illuminated visor mirrors and secondary visors		0	0	S	S	S	S	S
Automatic parking brake release	0	0	0	S	S	S		
Audio digital disc system (see page 20)		0	0		0	0	0	0
Rear facing third seat (wagon)	0	0	0	0	0	0		
Heavy-duty load-carrying suspension (with V-6 engine)	0	0	0	0	0	0		
Rear window wiper/washer (wagon)	0	0	0	0	0	0		
Styled road wheels (on 14" tires)		0	0	0	0	0		
Insta-Clear® heated windshield			0	0	0	0		

*May be deleted from package. (1) Dual beam map light, engine compartment light, dual courtesy light under instrument panel, plus headlamps-on reminder chime. (2) May be deleted with no price credit; still qualifies for package discount. (3) Standard stereo radio may be deleted for credit in every package except 206A, 208A and 212A. (4) Styled road wheels may be substituted with no loss of discount. (5) Turns headlamps on and off automatically. (6) Lifting front door handle automatically illuminates the key bezel and activates the interior lights. (7) Six premium speakers plus power amplifier. (8) A preset code allows the locking and unlocking of the doors without the use of a key. Includes illuminated entry system. (9) Tachometer plus door ajar, low washer fluid, low oil level, low fuel, and lamp out indicator lights. Included in optional electronic instrument cluster. Unique system in Taurus SHO (see page 20).

MAJOR STANDARD FEATURES

EXTERIOR

- Single aero-design halogen headlamps
- Polycarbonate bumpers
- Dual electric remote-control mirrors
- Shingled one-piece doors with concealed drip moldings
- Tinted glass—complete
- Bodyside protection moldings
- Aero-designed roof luggage rack (wagons)

INTERIOR

- Seats: reclining cloth split bench (L, GL, LX); reclining cloth bucket (SHO)
- Driver-side air bag supplemental restraint system
- 16-ounce floor carpeting
- Tilt steering wheel
- Electronic AM/FM stereo search radio (may be deleted for credit)
- Carpeted and lighted luggage/cargo compartment
- Interval windshield wipers
- Trip odometer
- Electronic digital clock
- Side window demisters
- Child-proof rear door locks
- Two-way liftgate (wagon)
- Built-in cargo tie-downs (wagon)
- Lockable under-floor storage, except with full-size spare tire (wagon)

TECHNICAL

- Front-wheel drive
- Electronic fuel injection (multi-port type with V-6 engines)
- Electronic engine controls (EEC-IV)
- 4-wheel independent suspension
- Power rack-and-pinion steering
- Power brakes: front disc/rear drum (L, GL, LX); 4-wheel disc with anti-lock system (SHO)

SPECIFICATIONS AND MEASUREMENTS

TAURUS L, GL, LX SPECIFICATIONS

Drivetrain	Front-wheel drive
Engine type (See page 21 for availability by model)	2.5L I-4; 3.0L V-6; 3.8L V-6
Induction system	Electronic central fuel injection (I-4 engine) Electronic multi-port fuel injection (V-6 engines)
Engine controls	Electronic Engine Control (EEC-IV) computer
Horsepower, SAE net	2.5L I-4: 90 @ 4400 rpm 3.0L V-6: 140 @ 4800 rpm 3.8L V-6: 140 @ 3800 rpm
Torque, SAE net	2.5L I-4: 130 lb.-ft. @ 2600 rpm 3.0L V-6: 160 lb.-ft. @ 3000 rpm 3.8L V-6: 215 lb.-ft. @ 2200 rpm
Transaxles	3-speed fluid linked converter (FLC) automatic (I-4 engine) 4-speed automatic overdrive (V-6 engines)
Front suspension (sedan/wagon)	Independent MacPherson type, gas-pressurized struts with variable-rate coil springs; stabilizer bar (.81" sedan; .87" wagon)
Rear suspension (sedan)	Independent MacPherson type, gas-pressurized struts with coil springs; .79" stabilizer bar (with V-6 engines)
Rear suspension (wagon)	Independent short/long arm (SLA) type, gas-pressurized shock absorbers; variable rate conical coil springs; .59" stabilizer bar
Steering	Power rack-and-pinion (L, GL, LX); Opt. variable power-assist, speed-sensitive system (LX)
Turning diameter (curb-to-curb)	38.1 ft.
Brakes	Std. power-assisted front discs/rear drums Opt. power 4-wheel discs with anti-lock brake system (V-6-powered GL, LX sedans)

TAURUS SHO SPECIFICATIONS

Drivetrain	Front-wheel drive
Engine type	3.0L DOHC 24-valve V-6
Induction system	Sequential electronic multi-port fuel injection
Engine controls	Electronic Engine Control (EEC-IV) computer
Exhaust system	Dual
Horsepower, SAE net	220 @ 6200 rpm
Torque, SAE net	200 lb.-ft. @ 4800 rpm
Transaxle	5-speed manual overdrive Gear ratios: 3.21:1 (1st), 2.09:1 (2nd), 1.38:1 (3rd), 1.02:1 (4th), 1.02:1 (5th), 3.42:1 (reverse) Transfer ratios: 3.74:1 (1st thru 4th gears and reverse), 2.73:1 (5th gear)
Clutch	9.25" diameter
Front suspension	Independent MacPherson type with performance handling components including higher-rate strut valving, stiffer suspension bushings, and larger .94" stabilizer bar
Rear suspension	Independent MacPherson type with performance handling components including higher-rate strut valving, stiffer suspension bushings, and larger 1.05" stabilizer bar
Steering	Power rack-and-pinion, 15.25:1 ratio
Turning diameter (curb-to-curb)	38.1 ft.
Brakes	Power-assisted 4-wheel discs with anti-lock brake system

TAURUS L, GL, LX MEASUREMENTS

	Sedan	Wagon
Wheelbase	106.0"	106.0"
Length	188.4"	191.9"
Height	54.1"	55.4"
Width	70.8"	70.8"
Tread: front	61.6"	61.6"
Tread: rear	60.5"	59.9"
Passenger volume index (cu. ft.)	100.1	100.3
Cargo volume index (cu. ft.)	17	—
Second seat up	—	45.7
Second seat down	—	81.1
Fuel capacity (gal.)*	16.0	16.0
Passengers**	6	6

Based on 1990 MVMA Passenger Car Specifications.
*16.6 with optional extended range fuel tank. Included in LX Preferred Equipment Package 208A.
**Five with bucket seats. Eight in wagons with optional rear facing third seat. Seven in wagons with front buckets and optional rear facing third seat.

TAURUS SHO MEASUREMENTS

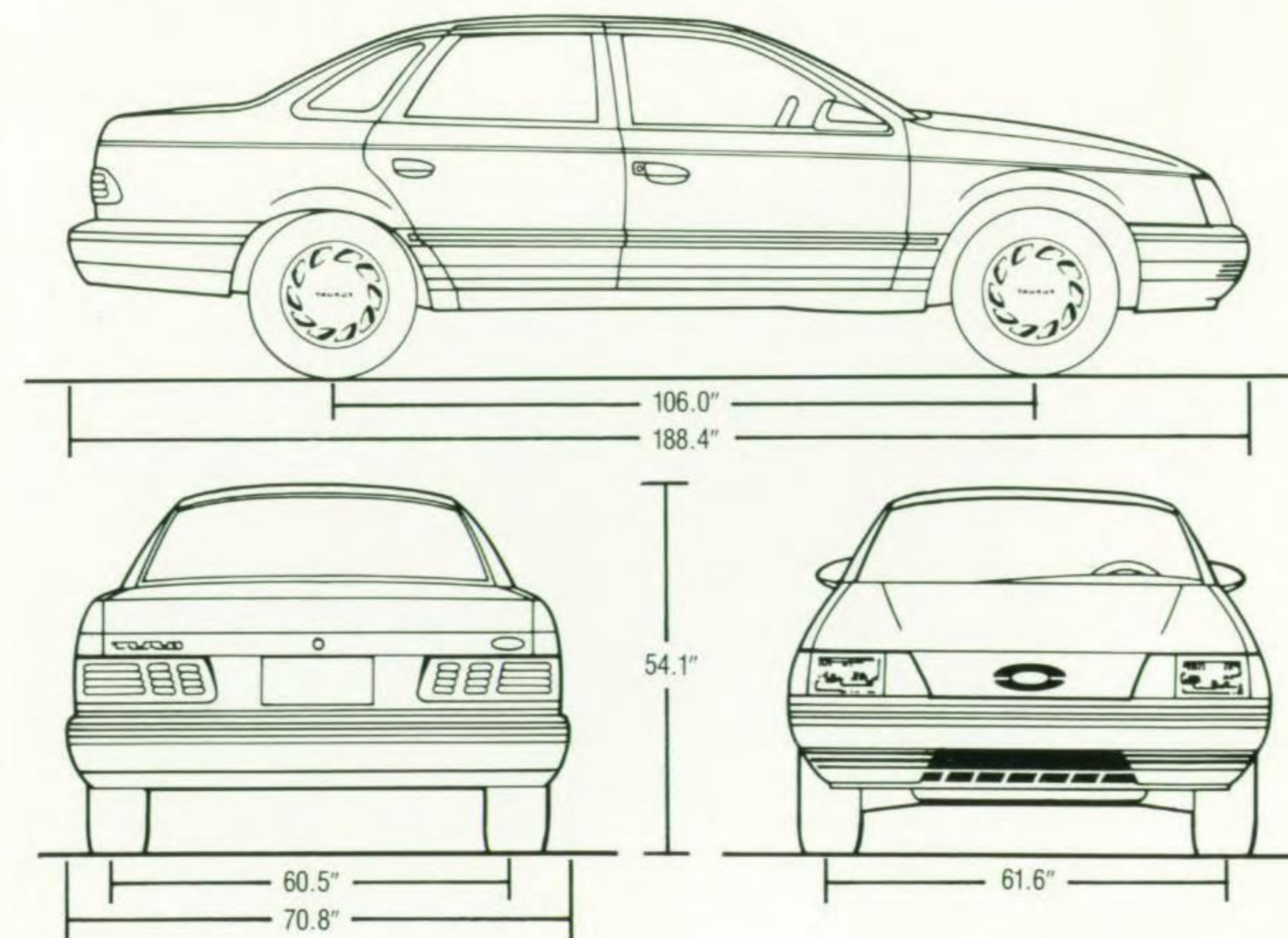
	Sedan
Wheelbase	106.0"
Length	188.4"
Height	54.1"
Width	70.8"
Tread: front	61.6"
Tread: rear	60.5"
Passenger volume index (cu. ft.)	100.1
Cargo volume index (cu. ft.)	17
Fuel capacity (gal.)	18.6
Passengers	5

Based on 1990 MVMA Passenger Car Specifications.

COLORS & TRIMS

Taurus L, GL, LX Exterior Colors	Interior Trim Colors				
	Black	Crystal Blue	Cinnabar*	Currant Red	Light Sandalwood
Black	X		X	X	X
Oxford White	X	X	X	X	X
Currant Red	X			X	
Currant Red Clearcoat Metallic	X			X	
Sandalwood Frost Clearcoat Metallic					X
Medium Sandalwood Clearcoat Metallic					X
Light Titanium Clearcoat Metallic	X			X	
Deep Titanium Clearcoat Metallic	X			X	
Crystal Blue Clearcoat Metallic		X			
Light Crystal Blue Clearcoat Metallic		X			
Twilight Blue Clearcoat Metallic		X			
Woodrose Clearcoat Metallic				X	
Medium Woodrose Clearcoat Metallic				X	
Taurus SHO Exterior Colors					
Black	X				X
Oxford White	X				X
Electric Red Clearcoat Metallic	X				X
Light Titanium Clearcoat Metallic	X				X

*Not available on Taurus L and wagon models.



SAFETY AND OWNER BENEFITS

Ford Motor Company strongly encourages all passengers to use their safety belts. In Taurus for 1990, an air bag supplemental restraint system for the driver's seat is standard in all models.



Ford also urges the use of child and infant restraints. Ford's easy-to-install Tot-Guard (for children 20 to 50 pounds) is available at all Ford Dealers. If a child restraint requires a top- tether, Taurus provides for attachment of an anchor at each forward-facing rear outboard seating position.

FORD LIFEGUARD DESIGN SAFETY FEATURES

Vehicle operation

Split diagonal hydraulic brake system with warning light □ Corrosion-resistant brake lines □ Flash-to-pass headlamps □ Turn indicator with lane-changing signal feature □ Hazard warning flasher □ Backup lamps □ Parking lamps coupled with headlamps □ High-mount stop lamp □ Two-speed and variable speed windshield wipers □ Windshield washers □ Dual outside electric remote-control rearview mirrors □ Glare-reduced instrument panel, windshield wiper arms and windshield pillars □ Uniform transaxle shift quadrant with safety starting switch (on cars equipped with automatic transaxle) □ Clutch or neutral interlock for starter motor (on cars equipped with manual transaxle) □ Continuously variable control illumination intensity (instrument cluster lighting) □ Safety hood latch system □ Responsive windshield defroster system □ Tamper-resistant (non-reversing) odometer □ Speedometer with high-lighted 55 mph (on cars with analog speedometer) □ Impact-actuated fuel pump shut-off switch for electronic fuel-injected engines

Occupant protection

Safety-designed front end structure □ Safety-designed roof structure □ Steel guard rails in side doors □ Safety-designed door hinges and double yoke safety door latches □ Integral lap and shoulder belts with automatic retractors for outboard occupants of front and rear seats □ Air bag supplemental restraint system for the driver □ Visual and audible safety belt fastening reminders for the driver's seat □ Lap belts with retractors for center front and center rear occupants (and optional rear facing third seat in wagons) □ Energy-absorbing steering column and steering wheel □ Energy-absorbing armrests and safety-designed door handles □ Energy-absorbing instrument panel with padding □ Energy-absorbing sun visors □ Energy-absorbing front seat back tops □ Head restraints for front outboard occupants □ Safety glove box latch □ Inside yieldaway rearview mirror □ Impact-absorbing laminated safety glass windshield □ Flame-resistant interior materials □ Safety-designed coat hooks □ Safety-designed radio control knobs and push buttons

Anti-theft

Locking steering column with audible key reminder □ Visible Vehicle Identification Number (VIN) □ Inside hood release

6-YEAR/60,000-MILE POWERTRAIN WARRANTY

Covers you and future owners with no transfer cost for 6 years or 60,000 miles, whichever comes first. This limited warranty covers major powertrain components. Ask your dealer for a copy of this warranty.

6-YEAR/100,000-MILE CORROSION WARRANTY

Taurus' corrosion warranty coverage for outer body panel rust-through is 6 years or 100,000 miles, whichever comes first. See your dealer for a copy of this limited warranty.

SCHEDULED MAINTENANCE

Here are some examples of normal scheduled maintenance intervals for the 1990 Taurus. For complete maintenance recommendations, refer to the Maintenance Schedule and Record Log.

Engine oil change	each 7,500 miles or 6 months
Spark plug change	each 30,000 miles*
Air filter replacement	each 30,000 miles
Engine coolant replacement	each 30,000 miles or 3 years

*60,000 for 3.0L and SHO V-6.

DAMAGE RESISTANCE

Ford equips Taurus with impact-resistant front and rear bumpers that meet the damageability requirements of the Federal Bumper Standards at 5 mph (exceeding the Standards' 2 1/2-mph requirement).

FORD DEALER QUALITY COMMITMENT

The Ford Quality Commitment extends beyond the factory to every facility where Ford products are sold worldwide. Your dealer knows that making your satisfaction his top priority is part of the total team effort. To him, "Quality is Job 1" means putting the customer first.



Participating Ford Dealers offer the Lifetime Service Guarantee, which guarantees their customer-paid work on your new or used Ford vehicle for as long as you own it. A covered repair is paid for once. If it ever has to be fixed again, the repairing dealer will fix it free. Ask to see a copy of the Lifetime Service Guarantee when you visit your participating Ford Dealer.



Optional Ford Extended Service Plans cover major components on new Ford cars and light trucks for longer than the vehicle's basic warranty. Your Ford Dealer has full details.



QUALITY REPLACEMENT PARTS FROM FORD

Genuine Ford and Motorcraft original equipment replacement parts meet the same high standards as those installed in production.



The leasing alternative is available to qualified lessees through your participating Ford Dealer, who can arrange a Red Carpet Lease* tailored to your circumstances through Ford Credit. A wide variety of financing plans are also available.

OPTIONS AVAILABILITY

Options shown or described in this catalog are available at extra cost and may be offered only in combination with other options or subject to additional ordering requirements or limitations.

PRODUCT CHANGES

Ford Division reserves the right to change product specifications at any time without incurring obligations.

"ASK YOUR FORD DEALER"

Following publication of this catalog certain changes in standard equipment, options, prices and the like, or product delays, may have occurred which would not be included in these pages. Your Ford Dealer is your best source for up-to-date information.

Best-Built American Cars.



This is based on an average of consumer-reported problems in a series of surveys of '81-'89 models designed and built in North America.