

# SUNDANCE PLYMOUTH





# P L Y M O U T H

## Safety is Sundance's most important feature

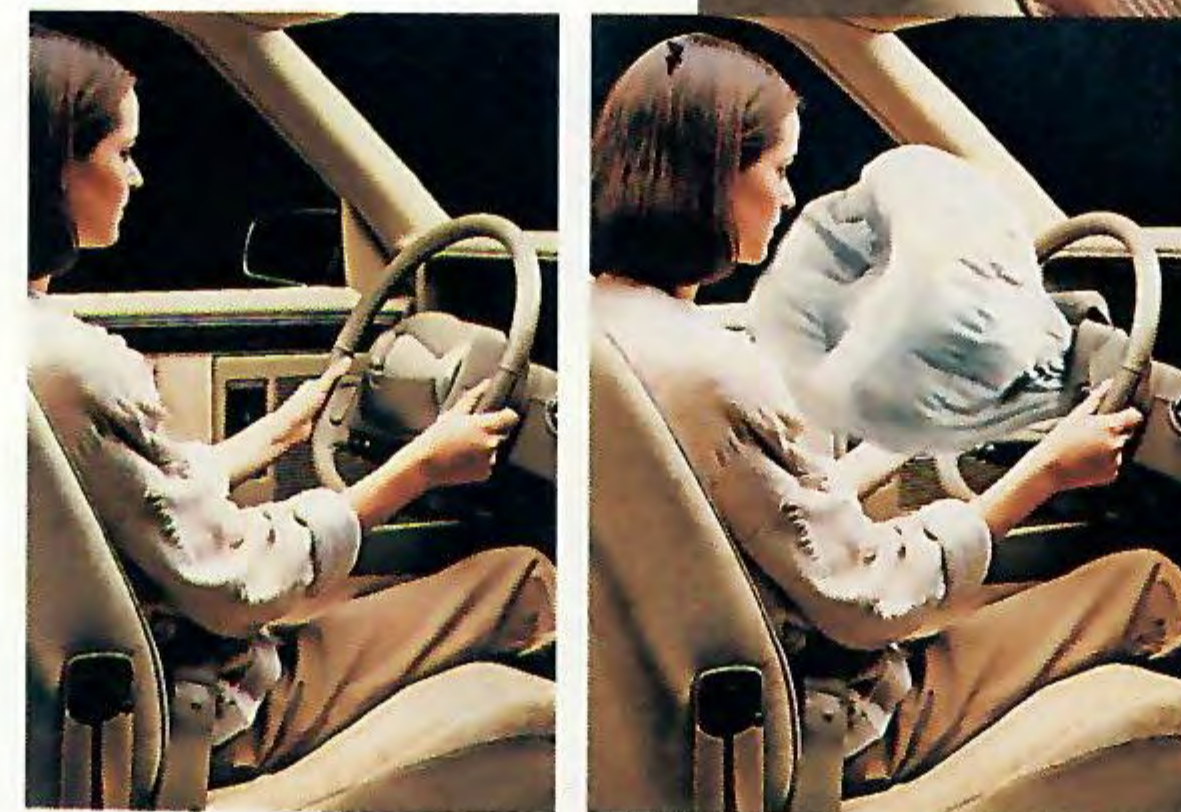
Your car should help protect you wherever you go. Plymouths do. We've received numerous letters from owners across the country attesting to the fact that our air bags help save lives.

**Driver-side air bag** is standard on all Sundance models and provides added safety for the driver when used in conjunction with the active three-point Unibelt restraint.

**Side door beams**, standard on all Sundance models, provide extra protection in side impacts.



Simulated air bag deployment shown.



**Three-point Unibelt restraint system**, standard, offers outboard rear seat passengers additional protection.



**Energy-absorbing five-mph front and rear bumpers**, standard, exceed the protection required by federal law.

**Powerdoor lock** option gives you extra security from the front seat position.

**Rear door Child-Protection locks on four-door models**, standard, offer security for children riding in the rear seat.

**Portable handheld cellular telephone** offers fingertip communications should you require roadside assistance. (Dealer supplied option. See page 17 for additional information.)



## The fun starts every time you turn the key

**About this catalog.** We have tried to make this catalog as complete as possible. However, since the time of printing, some of the information you'll find here may have been updated. Your dealer has details, and you should ask him for current information before ordering.

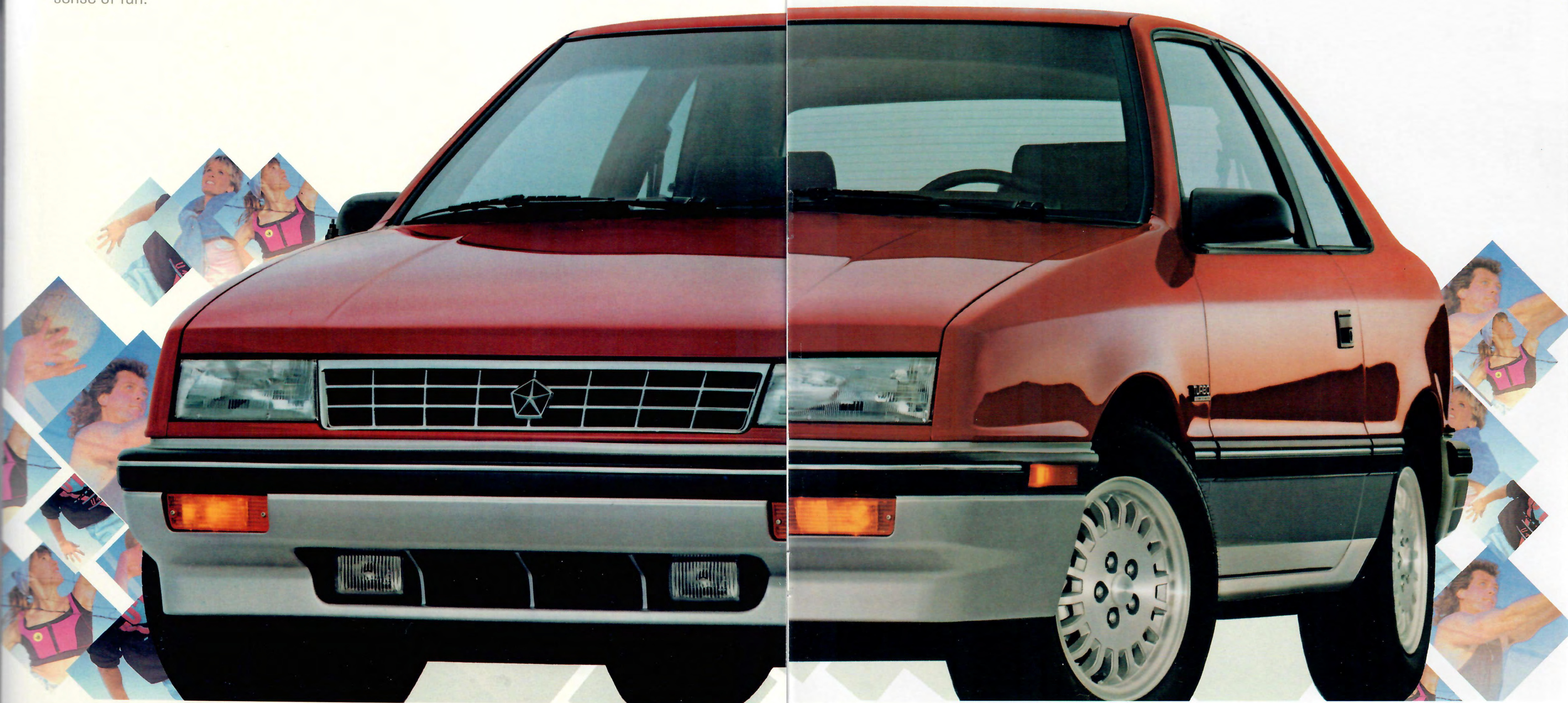
Some of the equipment shown or described throughout this catalog is available at extra cost.

Right: Plymouth Sundance RS with optional Turbo Engine Package, shown in Radiant Red Clear Coat/Platinum Silver Metallic Clear Coat.



**P**lymouth Sundance delivers everything you want in a sporty value-packed car. Agile performance, exceptional comfort, liftback versatility, abundant standard features, and the added safety of a driver-side air bag. Advantage: Plymouth. The 1991 Sundance. It appeals to your sense of value as well as your sense of fun.

# S U N D A N C E





S U N D A N C E

E N J O Y M E N T A W A I T S



***Sporty excitement  
from the moment  
you step inside***

**P**lymouth Sundance's innovatively designed, functional interior offers superb control with the safety of a driver-side air bag. You'll appreciate the improved comfort, roominess, and easy entry and exit of the completely redesigned seating. Sundance RS interior (shown above) features sporty cloth with vinyl trim low-back performance bucket seats and adjustable head restraints, while rear seats are comfortably contoured. And there's the advantage of generous front shoulder and hip room that further enhances your comfort. New conveniences include Eurostyle climate controls and available overhead console.





# SUNDANCE

***Sundance RS & Highline  
value, versatility, and  
sheer driving fun***

**P**lymouth Sundance is offered in two- and four-door liftback models. Sundance RS boasts sporty features such as a standard 2.5-liter SOHC (single overhead cam) EFI engine, two-tone paint, luggage rack, and more. There's also an available 2.5-liter SOHC SMPI (sequential multipoint fuel injection) turbo engine for impressive power.

Advantage: Plymouth. Sundance Highline's standard features begin with a responsive 2.2-liter SOHC EFI engine, cloth door trim panels, and an electronically tuned AM/FM stereo radio. For customizing your Sundance, there's a variety of Customer-Preferred equipment packages and an available 2.5-liter SOHC EFI engine.



*Sundance Highline, shown in Black Clear Coat.*



*Sundance RS, shown in Aquamarine Blue Metallic Clear Coat/Platinum Silver Metallic Clear Coat.*



S U N D A N C E

A M E R I C A



***One of the lowest-priced cars with a standard driver-side air bag***



**W**ith abundant standard features and a truly affordable price, the all-new Sundance America is the smart alternative to high-priced imports. The America's value advantage just begins with a responsive 2.2-liter SOHC EFI engine. Other features include a five-speed manual

transaxle, power-assisted steering and brakes, and an available three-speed automatic transaxle. A sporty, driver-oriented interior (shown left) offers newly designed cloth with vinyl trim low-back bucket seats, cloth door trim panels and mini floor console. Sundance America, shown in Radiant Red Clear Coat.



# SAFETY • ENGINEERING FEATURES • OPTIONS



Simulated air bag deployment shown.

**1 Standard driver-side air bag** provides added safety for the driver in the event of a front-end collision, when used in conjunction with the active Unibelt restraint.

**2 Steering column** is integrated with the vehicle's interior and features an illuminated ignition switch with time delay.



**4 Available 2.5-Liter SOHC SMPI Turbo engine** delivers a high peak acceleration for a real performance feel.

**3 New air conditioning system\*** includes easy-to-operate Eurostyle interior controls and a new compressor design for smoother and quieter operation.

**New standard 50/50 split folding rear seat** on Sundance RS (not shown) gives you over 33 cubic feet of cargo space when reclined. (A single-piece fold-down rear seat is standard on America and Highline models.)

## Corrosion Protection

- A.** Zinc-iron alloy-coated steel is zinc-phosphated as part of a nine-step pre-treatment which cleans and prepares the metal surface.
- B.** In a full immersion process, the entire body is coated with a corrosion-resistant epoxy electrocoat primer.
- C.** An anti-chip coating protects the lower bodyside against stone damage.
- D.** A two-stage base color coat is applied.
- E.** Two coats of clear are applied wet-on-wet over the base coat for an environmentally resistant mirror finish. (All body panels, except roof, exposed to corrosives are two-side galvanized/galvannealed.) See page 17 for 7/100 Anti-corrosion Limited Warranty.

**5 Three-point Unibelt restraint system** provides front and rear outboard seat passengers with additional protection in the event of a collision.

**Available portable handheld cellular phone** offers a wide range of features which are easily accessed through user-friendly menus. Includes one-step dialing, speed dialing, 100 memory locations and much more. (See page 17 for additional information.)



**6 "Child-protection" door lock system** (rear doors) is standard on all Sundance four-door models and provides a safer environment for children riding in the rear seat.

**7 New precision-feel suspension system** features front suspension improvements for better handling, steering returnability, and directional stability. (See page 15 for full suspension details.)

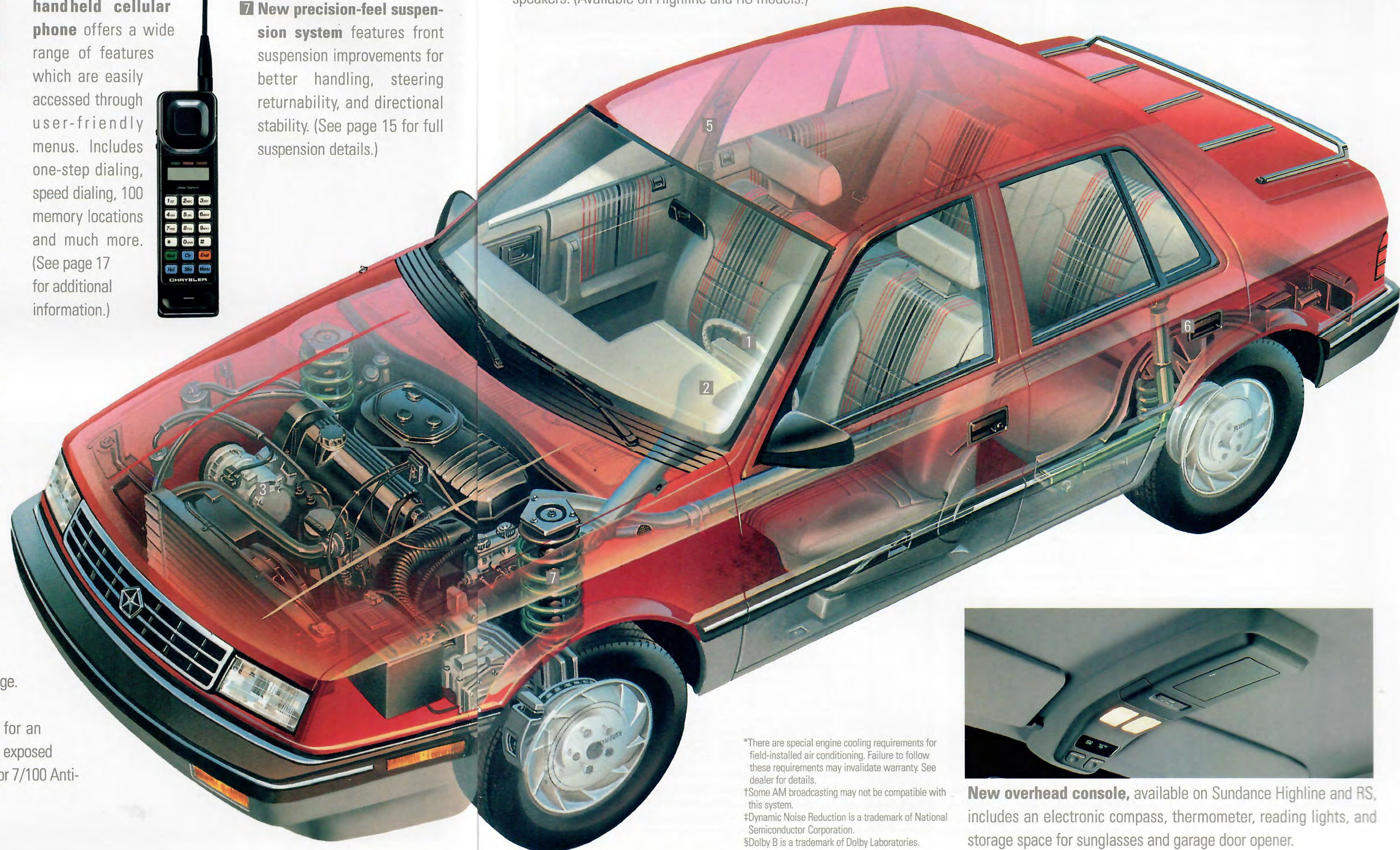


**Chrysler Infinity I Sound System** includes AM stereo†/FM stereo electronically tuned radio, integral digital clock, seek-and-scan, Dynamic Noise Reduction‡, cassette tape player with automatic reverse, Dolby B§ Noise Reduction, and four Infinity speakers. (Available on Highline and RS models.)



AM/FM stereo electronically tuned radio with cassette tape player features Dynamic Noise Reduction‡ auto reverse.

integral digital clock, and four-speaker sound. (Standard on RS, optional on Highline and America models.)



\*There are special engine cooling requirements for field-installed air conditioning. Failure to follow these requirements may invalidate warranty. See dealer for details.

†Some AM broadcasting may not be compatible with this system.

‡Dynamic Noise Reduction is a trademark of National Semiconductor Corporation.

§Dolby B is a trademark of Dolby Laboratories.



**New overhead console**, available on Sundance Highline and RS, includes an electronic compass, thermometer, reading lights, and storage space for sunglasses and garage door opener.



Four-Door Liftback



Rear Track: 57.2"



Wheelbase: 97.2"  
Overall Length: 171.7"



Front Track: 57.6"

Overall Width: 67.3"

SPECIFICATIONS<sup>1</sup>

TURNING DIAMETER (curb-to-curb)	36.1'		
FRONT/REAR TRACK	57.6"/57.2"		
CURB WEIGHT (1991 Preliminary Information) Two-door Four-door	America	Highline	RS
	2,617 lb	2,634 lb	2,691 lb
	2,654 lb	2,671 lb	2,728 lb
CARGO CAPACITY With rear seatbacks up	13.1 cu ft (four-door) 13.2 cu ft (two-door)		
	33.0 cu ft (four-door) 33.3 cu ft (two-door)		
PASSENGER CAPACITY	5		
FUEL CAPACITY	14 gal		
TRAILER TOWING CAPACITY	2.2L engine	1,000 lb w/manual transaxle 1,500 lb w/auto. transaxle	
	2.5L engine	1,000 lb w/manual transaxle 2,000 lb w/auto. transaxle	

ENGINES



2.2-LITER SOHC EFI ENGINE

Sundance America and Highline's standard 2.2-liter SOHC (single overhead cam) EFI (electronic fuel injection) four-cylinder engine includes electronic fuel injection for optimal fuel metering and usage. Engineering features include an overhead cam, roller tappets, and a fastburn cylinder head that help provide smooth, consistent operation.



2.5-LITER SOHC EFI DUAL BALANCE-SHAFT ENGINE

A responsive 2.5-liter SOHC (single overhead cam) EFI (electronic fuel injection) dual balance-shaft engine is standard on Sundance RS and available on Highline models. It produces increased torque for performance, electronic fuel injection to ensure precise fuel use, and counter-rotating dual balance shafts that dampen engine vibration.



2.5-LITER SOHC SMPI TURBOCHARGED ENGINE<sup>2</sup>

A powerful 2.5-liter SOHC (single overhead cam) SMPI (sequential multipoint fuel injection) turbocharged engine is available for Sundance RS. It features a single overhead camshaft design with low-inertia turbine and compressor for higher sustained peak acceleration and substantial low-end torque. Counter-rotating dual balance shafts offer quiet, low-vibration operation. (Includes Turbo Engine Package. See page 16 for contents.)

POWER TRAIN CHART<sup>3</sup>

ENGINE	TRANSAXLE	AVAILABILITY			CUSTOMER-PREFERRED PACKAGE GROUP AVAILABILITY	BORE & STROKE	COMPRESSION RATIO	HORSEPOWER/TORQUE SAE NET @ RPM	
		AMERICA	HIGHLINE	RS					
2.2-liter (135 CID) SOHC EFI 4-cylinder	5-speed manual <sup>4</sup>	S	S	NA	W, X, Y, A, B	3.44" x 3.62"	9.5:1	93 hp @ 4,800	122 lb-ft @ 3,200
	3-speed auto <sup>5</sup>	O	O	NA					
2.5-liter (153 CID) SOHC EFI 4-cylinder	5-speed manual <sup>6</sup>	NA	O	S	A, B, C, D, E, G, H	3.44" x 4.09"	8.9:1	100 hp @ 4,800	135 lb-ft @ 2,800
	3-speed auto <sup>5</sup>	NA	O	O					
2.5-liter (153 CID) SMPI turbocharged 4-cylinder	5-speed manual <sup>6</sup>	NA	NA	O	G, H	3.44" x 4.09"	7.8:1	150 hp @ 4,800	180 lb-ft @ 2,000
	3-speed auto <sup>5</sup>	NA	NA	O					
								Automatic Transaxle	

S = Standard. O = Optional. NA = Not available. <sup>1</sup>Based on 1990 information. <sup>2</sup>Premium unleaded fuel recommended. Turbocharged engine not recommended for trailer towing and such use may damage engine and invalidate warranty. See your dealer for details. <sup>3</sup>Emission controls and testing required at extra cost on all vehicles registered in California; not available otherwise. <sup>4</sup>5-speed manual overdrive transaxle top gear ratio = 2.76. <sup>5</sup>3-speed automatic overall top gear ratio = 3.02. <sup>6</sup>5-speed manual overdrive overall top gear ratio = 2.51.

FUNCTIONAL

	SUNDANCE AMERICA	SUNDANCE	SUNDANCE RS
Alternator—75-ampere	S	NA	NA
Alternator—90-ampere	NA	S	S
Battery—400-ampere; maintenance-free	S	S	NA
Battery—500-ampere; maintenance-free	NA	P	S
Brakes—Vented front disc and self adjusting rear drum: power-assisted	S	S	S
Electronic Ignition, Fuel Injection, and Voltage Regulator	S	S	S
Exhaust System—Quiet-Tuned	S	S	S
Fuel Tank—14-gallon	S	S	S
Fuse Box—Easy access: contains spare fuse holder and fuse removal tool	S	S	S
Headlights—Halogen: aerostyle with stone-resistant plastic lenses	S	S	S
Jack—Scissors-type	S	S	S
Liftgate Release—Remote, cable-operated	NA	P	S
Steering—16: 1 ratio, rack-and-pinion: power-assisted	S	S	S
Suspension—Precision-handling: gas-charged front position-sensitive struts and rear shock absorbers; front and rear antisway bars	S	S	S
Tire—Spare: compact	S	S	S
Tires—P185/70R14 steel-belted radial, all-season black sidewall (set of four)	S	S	NA
Tires—P185/70R14 steel-belted radial all-season touring black sidewall (set of four)	NA	NA	S
<b>EXTERIOR</b>			
Bumpers—Black soft fascia, integral protective rub strips with bright accent, 5 mph, energy absorbing	S	S	NA
Bumpers—Lower accent color with black rub strips and bright accent, 5 mph energy absorbing	NA	NA	S
Corrosion Protection—Urethane protective coating on lower body panels; extensive use of galvanized steel	S	S	S
Cover—Window pillar: black (two-door models only)	NA	S	S
Fog Lamps	NA	NA	S
Fuel Filler Cap—Tethered	S	S	S
Glass—Tinted: liftback only (four-door)	S	S	S
Glass—Tinted: liftback and rear quarter windows (two-door)	S	S	S
Grille—Bright: with bright Pentastar	S	S	S
Hood—Counterbalanced with insulation pad and inside release	S	S	S
Luggage Rack—Liftgate-mounted	NA	NA	S
Mirror—Exterior: left, remote	S	S	NA
Mirrors—Exterior: dual outside remote	E	E	S
Molding—Bodyside: wide black with bright accent	NA	P	S
Moldings—Narrow bodyside, black	P	S	NA
Paint—Two-tone	NA	NA	S
Wheels—Argent painted steel wheels with black hub center and lug nut covers (set of 4)	S	NA	NA
Wheel Covers—Sport: 14-inch (set of four)	NA	S	S
<b>INTERIOR</b>			
Air Bag—Steering wheel-mounted	S	S	S
Ash Receiver—Front	S	S	S
Brake—Parking: foot pedal-operated	S	S	S
Carpeting—Full cargo compartment dress-up: Charcoal	S	S	S
Carpeting—Passenger compartment: color-keyed	S	S	S
Cellular Phone—Portable	E	E	E
Chimes—Reminders: fasten seat belt; headlights on; key-in-ignition (buzzer on America models)	S	S	S
Cigar Lighter—With illuminated socket	S	S	S

INTERIOR (cont.)

	SUNDANCE AMERICA	SUNDANCE	SUNDANCE RS
Clock—Electronic digital: integral with all radios	E	S	S
Console—Mini	S	S	NA
Console—Full	NA	P	S
Demisters—Side window	S	S	S
Door Locks—Childproof (on four-door rear doors only)	S	S	S
Door Trim Panels—Cloth garnish	S	NA	NA
Door Trim Panels—Premium cloth garnish	NA	S	S
Glove Box—Latching	S	S	S
Headliner—Cloth-covered	S	S	S
Heater and Defroster—With bi-level ventilation	S	S	S
Horn—Dual-note	NA	P	S
Horn—Single-note	S	S	NA
Instrument Cluster—Electromechanical: includes speedometer, odometer, trip odometer, gauges for electrical systems voltage, engine coolant temperature, fuel level, warning lights for check engine, high beam headlights on, low engine oil pressure, parking brake on, fasten seatbelts, air bag and emissions	S	S	NA
Instrument Cluster—Electromechanical: speedometer, tachometer, odometer, trip odometer, gauges for electrical system voltage, engine coolant temperature, and fuel level; warning light for check engine, high beam headlights on, low engine oil pressure, parking brake on, fasten seatbelts, air bag and emissions	NA	P	S
Light Group Package—Includes ash receiver light, cargo compartment light, glove box light, rear door dome light switch (four-door only), underhood light, dual illuminated visor vanity mirrors	P	P	S
Lights—Cigar lighter, dome, ignition switch with time delay	S	S	S
Mirror—Interior: rearview day/night	S	S	S
Mirrors—Interior: driver and passenger visor vanity, non-illuminated	S	S	NA
Mirrors—Interior: driver and passenger visor vanity, illuminated	P	P	S
Multifunction Control Lever—Mounted on steering column: includes controls for turn signals with lane-change feature, day/night flash/pass feature, headlight dimmer	S	S	S
Radio—AM/FM stereo radio with integral digital clock and two speakers	E	S	NA
Radio—AM/FM stereo with cassette player, integral digital clock and four speakers	E	E	S
Seatback—Rear, 50/50 split folding with 3-point color-keyed outboard seat belts	NA	NA	S
Seatback—Rear, folding with 3-point color-keyed outboard seat belts	S	S	NA
Seats—Front, performance cloth with vinyl trim reclining thin-back bucket with driver's side lumbar adjuster with color-keyed 3-point seat belts	NA	NA	S
Seats—Front, reclining cloth with vinyl trim thin-back bucket with color-keyed 3-point seat belts	S	S	NA
Seat Track—2-way adjustable	S	S	S
Shelf Panel—Removable, carpeted, pivoting	S	S	S
Steering Wheel—Luxury, with air bag	S	S	S
Tether Anchor—Child restraint	S	S	S
Windshield Wipers—Variable intermittent wipe feature	NA	E	S
Windshield Wipers—2-speed	S	S	NA

S = Standard. E = Extra Cost. P = Package only. NA = Not available.



CUSTOMER-PREFERRED PACKAGES\*

**SUNDANCE AMERICA**

PACKAGE CONTENTS

CODES	W <sup>1</sup> (base)	X	Y
Air Conditioning <sup>2</sup> and Tinted Glass			•
Electric Rear Defroster <sup>3</sup>		•	•
Light Package		•	•
Dual Outside Mirrors		•	•
Floor Mats		•	•
AM/FM Stereo Radio		•	•
Narrow Bodyside Moldings		•	•

**SUNDANCE HIGHLINE**

PACKAGE CONTENTS

CODES	A <sup>1</sup> (base)	B	C	D	E
Air Conditioning <sup>2</sup> and Tinted Glass		•		•	•
Electric Rear Defroster <sup>3</sup>		•	•	•	•
Tilt Steering		•	•	•	•
Light Package			•	•	•
Floor Console, Four Radio Speakers			•	•	•
Liftgate Release, Dual Note Horn			•	•	•
Wide Bodyside Molding			•	•	•
Bodyside Accent Stripe			•	•	•
Intermittent Wipers			•	•	•
Tachometer with 125 mph Speedometer			•	•	•
Dual Outside (Manual) Remote Mirrors			•	•	
Dual Outside (Power) Remote Mirrors					•
Speed Control, Power Door Locks					•
AM/FM Stereo Cassette Radio					•
Floor Mats					•

**SUNDANCE RS**

PACKAGE CONTENTS

CODES	G <sup>1</sup> (base)	H
Air Conditioning <sup>2</sup> and Tinted Glass		•
Electric Rear Defroster <sup>3</sup>		•
Tilt Steering		•
Speed Control		•
Power Door Locks		•
Dual (Power) Outside Remote Mirrors		•
Infinity I Sound System		•
Floor Mats		•

\*See your dealer for complete option availability. <sup>1</sup>Packages A, G and W represent base vehicles. See page 15 for a listing of standard features. <sup>2</sup>There are special engine cooling requirements for field-installed air conditioning. Failure to follow these requirements may invalidate the warranty. <sup>3</sup>Electric rear window defroster required in New York State. Available as independent option.

OPTIONS PACKAGES

**TURBO ENGINE PACKAGE<sup>1</sup>** (Included with Turbo engine option)

- Engine dress-up
- Heel/toe type accelerator and brake pedals (manual transaxle only)
- Message center
- P185/70R14 steel-belted radial tires with all-season touring tread (set of four)
- Performance tuned exhaust system with dual exhaust tips
- Turbo identification
- Turbo vacuum/boost gauge

**LIGHT GROUP<sup>1</sup>**

- Dual illuminated visor vanity mirror
- Glove box light
- Ash receiver light
- Underhood light
- Cargo compartment light
- Rear door dome light switch (available on four-door models only)

**SUNDANCE SPECIAL PACKAGE**

Available on select customer-preferred packages. This package features two-tone paint and 14" cast aluminum road wheels (set of four).

<sup>1</sup>Available in package only.

STANDARD SAFETY FEATURES

- Air bag, driver-side
- Anti-theft trunk lock
- Backup lights
- Brake fluid pressure loss warning light (also serves as indicator when parking brake is applied)
- Child protection rear door locks (four-door only)
- Double ball-joint rearview mirror mount
- Dual braking system with separate brake fluid reservoirs in the master cylinder
- Electric windshield wipers
- Energy-absorbing front seatbacks
- Energy-absorbing instrument panel and sun visors
- Energy-absorbing steering column
- Fade-resistant front disc brakes
- Front seat head restraints
- Glare reduction measures for instrument panel, steering wheel, and windshield wipers
- Hazard warning flasher system
- Ignition and steering column lock
- Impact-actuated fuel supply shutdown relay
- Inside rearview mirror
- Interlocking door latches
- Key-left-in-ignition reminder
- Non-override door locks (except driver's door)
- Recessed inside door release handles
- Reinforced windshield header and roof
- Resilient window crank knobs
- Safety-Rim wheels
- Seat belt reminder system
- Seatback inertia latches on folding front seats (two-door only)
- Shatter-resistant glass
- Side door beams
- Side marker lights and reflectors
- Turn signals with lane-change feature

COLOR COMBINATIONS

SUNDANCE AMERICA AND HIGHLINE MODELS

EXTERIOR PAINT COLORS	INTERIOR COLORS <sup>1</sup>
Black Cherry Pearl Coat	Bordeaux Champagne Medium Quartz
Radiant Red Clear Coat	Champagne Medium Quartz
Raspberry Red Pearl Coat*	Bordeaux Medium Quartz
Aquamarine Blue Metallic Clear Coat	Champagne Medium Quartz
Black Clear Coat	Champagne Medium Quartz
Platinum Silver Metallic Clear Coat*	Bordeaux Slate Blue Medium Quartz
Bright White Clear Coat	Bordeaux Champagne Slate Blue Medium Quartz
Light Spectrum Blue Metallic Clear Coat	Slate Blue
Electric Blue Metallic Clear Coat**	Medium Quartz
Light Champagne Metallic Clear Coat**	Champagne

\*Extra Cost

<sup>1</sup>Sundance America models are available with Medium Quartz interiors only.

\*\*Not available on Sundance America.

SUNDANCE RS

TWO-TONES	INTERIOR COLORS
Radiant Red Clear Coat Platinum Silver Metallic Clear Coat	Medium Quartz
Raspberry Red Pearl Coat Platinum Silver Metallic Clear Coat	Medium Quartz
Aquamarine Blue Metallic Clear Coat Platinum Silver Metallic Clear Coat	Medium Quartz
Electric Blue Metallic Clear Coat Platinum Silver Metallic Clear Coat	Medium Quartz
Light Spectrum Blue Metallic Clear Coat Platinum Silver Metallic Clear Coat	Medium Quartz

TIRES

SIZE	TYPE (Set of Four)	AVAILABILITY
P185/70R14	Steel-belted radial with all-season tread, black sidewall	Standard Sundance America and Sundance Highline
P185/70R14	Steel-belted radial with all-season touring tread, black sidewall	Standard on Sundance RS

MILEAGE

23 EPA est. city mpg, 30 EPA est. hwy. mpg\*

\*Mileage figures based on 1991 figures for Highline model standard engine with 5-speed manual overdrive transaxle.



Quality Worth Backing

All Chrysler Motors domestically built automobiles and light trucks now

benefit from the 7/70 Power Train Limited Warranty. Upon expiration of the basic 12-month or 12,000-mile Basic Limited Warranty, coverage is extended on power train components to seven years or 70,000 miles.\* This represents one of the most comprehensive original limited warranties available on cars and trucks built and sold in the United States, and points out Chrysler Motors' pride in building and backing its products the right way.

In addition to the 7/70 Power Train Limited Warranty described above, all domestically built Chrysler Motors automobiles offer the 7/100 Anticorrosion Limited Warranty. Your dealer will repair or replace at no charge outer body sheet metal panels found to have developed perforation (rust-through) in normal use up to seven years or 100,000 miles. See your dealer for a copy of the limited warranties.

\*A deductible applies

**Optional Service Contract Coverage** Chrysler Service Contracts provide you with additional peace-of-mind protection for your new vehicle. Chrysler Motors offers a variety of plans to meet your needs. Plan coverage begins after your vehicle's basic warranty expires. A deductible applies. Allowances for car rental and towing are also included. See your dealer for details.



MOPAR parts are engineered by Chrysler Motors for use in your new Plymouth Sundance. When replacement is necessary, be sure to specify MOPAR parts.

Used by professional automotive technicians worldwide.

**Chrysler Cellular Systems** OKI\* Telecom manufactures, services, and is the warrantor of the Visorphone, Mobile phone and Portable phone products that are available on selected Chrysler Motors vehicles. See your dealer for a copy of the limited warranties. Restrictions apply.

**Consider Leasing** More consumers are considering leasing as an alternative to buying. Leasing a new Plymouth Sundance usually involves a small security deposit and a first month's lease payment. Monthly payments frequently are less than financing a new car purchase. Ask your dealer for details.

**Chrysler Credit**

**Making the best even more affordable.** Chrysler Credit offers a variety of finance programs that will help make your new Plymouth Sundance even more affordable. These special finance and leasing programs are designed to meet the needs of today's automotive buyer. They include Gold Key Lease, America's Choice Payment Plan, College Graduate Plans, Retail Financing, and more. Ask your salesperson for details.

**Chrysler Purchase Assistance Program for the Physically Challenged**

Cash reimbursements of up to \$500 are available for qualified adaptive driving devices on 1991 Chrysler Motors cars and trucks. For further information, contact your dealer or the PHYSICALLY CHALLENGED RESOURCE CENTER AT 1-800-255-9877.

All product illustrations and specifications are based upon current information at the time of publication approval. Although descriptions are believed correct, complete accuracy cannot be guaranteed. Chrysler Motors reserves the right to make changes from time to time, without notice or obligation, in prices, specifications, colors and materials, and to change or discontinue models. See your dealer for the latest information.

Plymouth and MOPAR are registered trademarks, and Sundance is a trademark of Chrysler Corporation.

**Buckle up for safety.**





I'm proud of the quality and honest value we build into our products. But a lot of Americans aren't aware of it and that's got to change. Our 1991 Plymouths have real advantages over their import and domestic competition. Take Plymouth Sundance. For safety, you'll find a standard driver-side air bag and rear outboard lap/shoulder belts. That saves lives. Sundance is also backed by seven years or 70,000 miles of power train protection, and seven years or 100,000 miles against outer body rust-through—one of the best limited warranties of any vehicle made. All of these advantages add up to a vehicle that we believe no other car company in the world can beat. Take a good look at Plymouth Sundance versus the competition. For style, value, standard features, and advance engineering, the other guys simply don't measure up. Advantage: Plymouth. But best of all, Advantage: customer.

*Lee A. Iacocca*



VOYAGER • ACCLAIM • SUNDANCE • LASER • COLT • VISTA