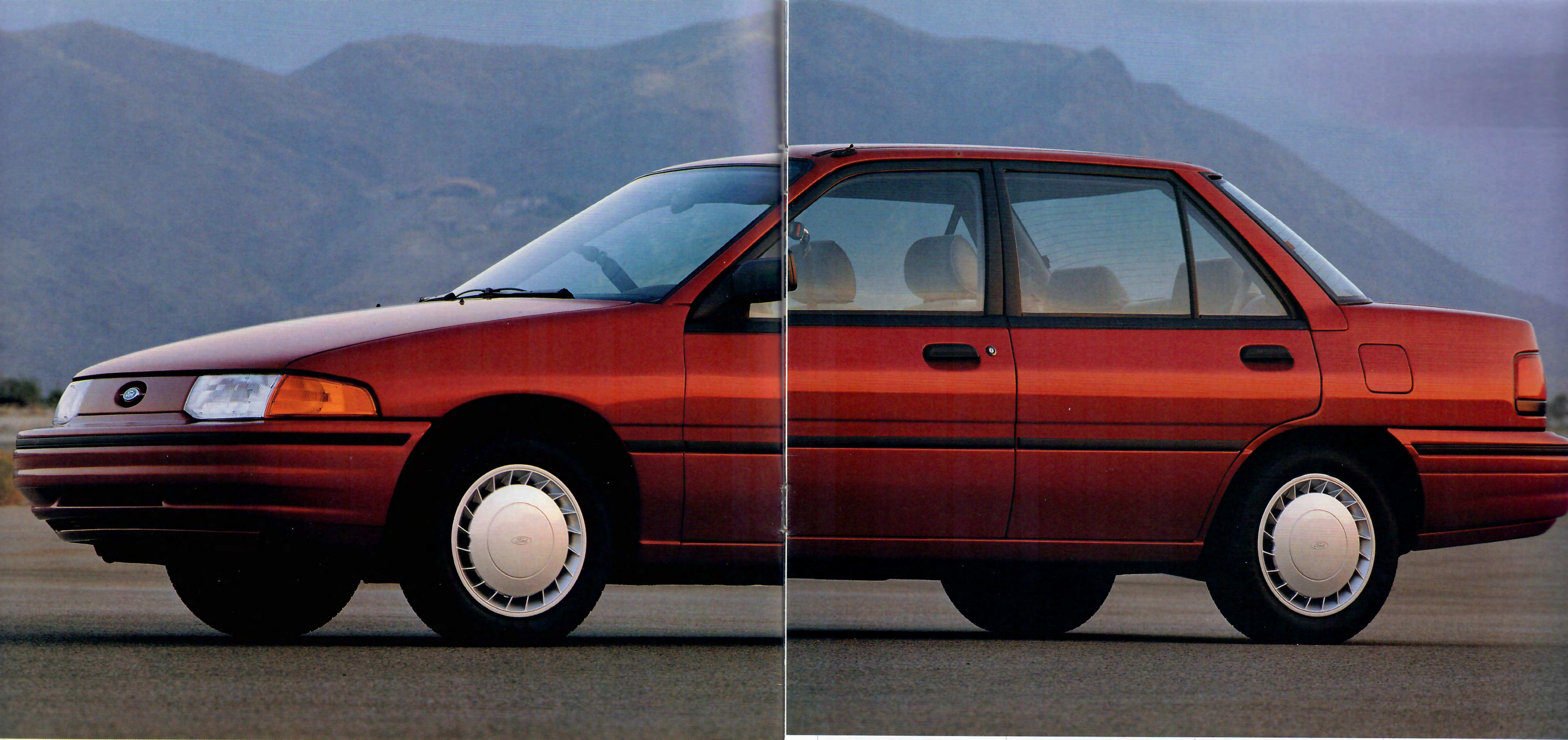


F O R D 1 9 9 2

Escort





THE NEW ESCORT
SEDAN MAKES A
STRONG LINEUP
EVEN STRONGER.

Now there's a wider choice than ever in the Escort ranks. Versatile 2- and 4-door hatchbacks. A sleek yet spacious wagon. And, making its debut in 1992, new sedan models for those who prefer a more formal body style.

Within the new sedan series, there are two distinct personalities. The LX has roominess and comfort for five. It's well-equipped and a

pleasure to drive. The LX-E, though it appears gracefully sedate, shares the GT's performance hardware, including the 16-valve, multiple-port EFI engine. Which driving style appeals to you?

Like all Escorts, both are products of Ford's continuing commitment to quality and a reflection of the design leadership Ford has brought to the 90s.



Above: the Escort LX Sedan shown in Wild Strawberry Clearcoat Metallic with the LX Preferred Equipment Package.

Left: Escort LX-E. Performance-wise, it's a GT in disguise. It's shown here in Black with the LX-E Preferred Equipment Package.

THE ESCORT
FORMULA FOR
SUCCESS: BUILD A
HIGH-QUALITY CAR
THAT WILL STAND
OUT IN A QUALITY-
CONSCIOUS
WORLD.



The quality built into every Ford Escort did not come about by accident. Its development program was established around a single goal: build an advanced small car with quality high enough to compete head on with the best the world has to offer. The degree to which this goal has been realized can

best be appreciated with a close inspection of the car. The consistency of the seams, the alignment of components, the feel of the materials — all underscore the strenuous commitment to fit and finish quality that began in the design phase and was reaffirmed every step of the way right up

through the manufacturing and assembly stages.

And when you've chosen the Escort that's right for you, be sure to take advantage of the Preferred Equipment Package for your model (page 17). They're groups of features that can save you money over the same items if purchased separately.



Above: LX 4-door hatchback shown in Light Titanium Clearcoat Metallic with the LX Preferred Equipment Package.

Left: LX 2-door hatchback shown in Wild Strawberry Clearcoat Metallic with the LX Preferred Equipment Package.

AN INTERIOR
DESIGNED TO
TREAT ALL FIVE OF
ITS OCCUPANTS
LIKE SPECIAL
GUESTS.

You want the time you spend in your car to be as pleasant as possible. In Escort, advanced design has created a space-efficient environment with roominess and comfort for 5. The front bucket seats recline and include cloth trim on the seating surfaces. The LX 60/40 split/fold rear seat is wide enough for three people and offers real passenger/cargo-carrying versatility.

Escort's wraparound-style instrument panel integrates smoothly with the door trim, unifying the look of the interior. The center console has a front bin and even has cup holders. An electronic AM/FM stereo radio is standard with the LX. Demisters help keep



the side windows clear and rear seat passengers enjoy their own heat ducts.

Behind the seats is a 17.6-cubic-foot storage area (4-door hatchback) which the standard cargo cover conceals. With both seat backs down, the capability is increased to 36 cubic feet.



A smooth-shifting 5-speed manual overdrive transaxle is standard; an electronically controlled 4-speed automatic is optional.

The LX split-fold rear seat with dual release handles provides people/cargo versatility (also standard with GT).

Escort LX interior shown in Titanium with the LX Preferred Equipment Package and items of optional equipment.

ESCORT WAGON:
CAPABILITY AND
STYLE BEAUTIFULLY
BLENDED.



The optional wagon group includes the deluxe luggage rack and the rear window wiper/washer for added convenience.

Escort Wagon, though its smooth silhouette is beautifully sculpted, combines 5-passenger roominess with all the utility that makes a wagon a wagon. Even with the rear seat backs up, there's room for 30.6 cubic feet of cargo behind. With both of the seat backs folded down, the usable area increases to its generous 66.9 cubic foot maximum.

The LX-level rear seat is split into a 60/40 arrangement for increased versatili-

ty. Fold one seat back down to allow for a passenger and lengthy cargo (skis for example). Fold both seat backs down to take advantage of the entire load area. A window-shade-type cargo cover helps keep valuables out of sight in the rear portion of the cargo area when the rear seat backs are up.

Look the 1992 Escort Wagon over. It's proof that a sleek, stylish exterior does not necessarily preclude a pleasantly practical interior.



Escort LX Wagon in Crystal Blue Clearcoat Metallic with the LX Preferred Equipment Package and the optional wagon group.

The Escort LX Wagon interior, shown in Crystal Blue with the LX Preferred Equipment Package and items of optional equipment.

SIXTEEN VALVES
AND 127
HORSEPOWER
CAN DO A LOT
TO TAKE THE
ROUTINE OUT
OF YOUR
ROUTINE DRIVES.

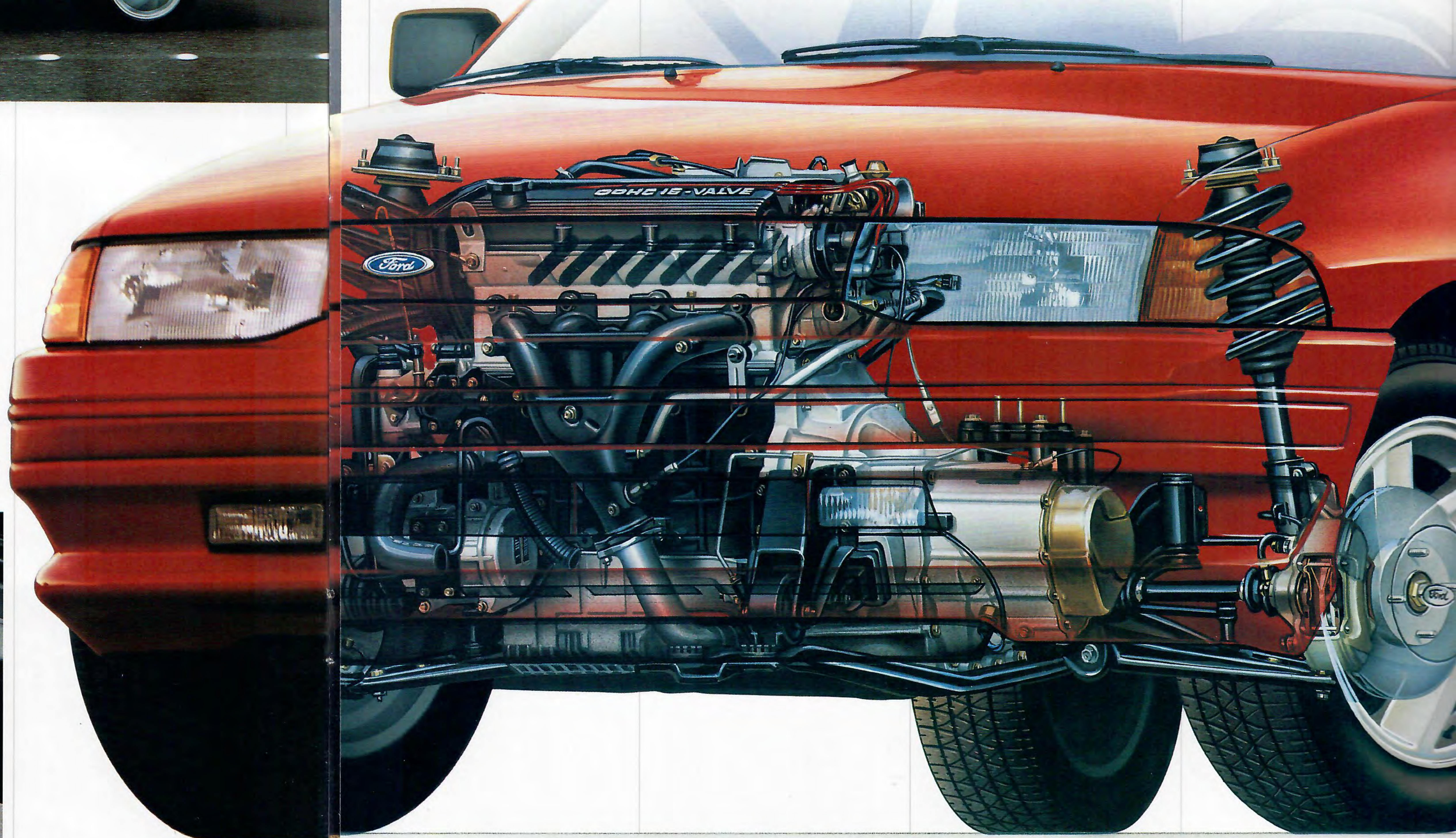


While some people are perfectly content to drive their cars when they need to be somewhere, others invent places to be in order to drive their cars. From the fog lamps in front to the spoiler in the rear, Escort GT serves notice that garage duty is very low on its priority list. This is that other Escort. Decidedly sporty. Rewardingly agile. Positively enjoyable. It's for those who equate driving with fun and want a little something extra when they take the wheel.

Firm sport seats are designed to help hold their occupants in place, especially while cornering. Quick-reading analog instrumentation includes a tachometer.

But the sport-oriented appointments and clean lines give way to the prime source of GT driving enjoyment. Under the hood is a 1.8 liter 4-cylinder engine with dual overhead cams, multiple-port electronic fuel injection and 16 valves.

The 16-valve configuration puts four at each cylinder (2



for intake, 2 for exhaust). This multiple-valve arrangement promotes high-flow breathing and rapid-burn combustion for a higher power output than the conventional two valves per cylinder. It helps the engine generate 127 hp (SAE rating) at 6,500 rpm. That kind of power means extra confidence in passing situations.

GT's manual transaxle features short throws, smooth operation and an overdrive

fifth gear that makes for efficient cruising (EPA mileage estimates not available at press time). An optional electronic 4-speed automatic overdrive is available for those who prefer a less active style of driving.

Precise power rack-and-pinion steering and a sport handling suspension give GT its agility. Power disc brakes at all four wheels and performance radial tires also enhance its roadability.



The purposeful appearance of the 1.8 liter DOHC 16-valve engine is an accurate indication of what goes on inside. It delivers 127 hp at 6,500 rpm for maximum performance.

Escort GT's well-appointed interior includes a bin with removable cup holder tray in the center console as well as the light group. It's shown here with the GT Preferred Equipment Package.





Menacing? No, that's going a little too far. Spirited? Spunky? That's more like it. Fun to drive? You bet.

Escort GT just might be the best thing going in its price range. 16 valves give it gratifying response. A handling suspension gives it a nice tight feel. The seats are firm and supportive. And it's a well equipped car.

Take it out on the road. When you start weighing the performance against the price, we think there's a better than even chance you'll be taking it home.

Escort GT 2-door hatchback shown in Bright Red with the GT Preferred Equipment Package.

FEATURES, OPTIONS AND PACKAGES.

Power windows are included in the power equipment group, optional with selected models.

Standard with LX-E and GT, the AM/FM stereo radio with cassette tape is optional with other Escorts.

A glance down the standard equipment list at right will tell you Escort is indeed a well-equipped automobile. Even so, you shouldn't overlook the cost advantage provided by Escort Preferred Equipment Packages. Preferred Equipment Packages consist of popular features which, when purchased as a group, offer a substantial savings over the manufacturer's suggested retail prices for the items if purchased separately. They're the smart and easy way to add desirable equipment to your new Escort.

The popular rear window defroster is optional with the standard Escort, included in all other packages.

The optional power moonroof lets in the sun or the stars for a great open-air feeling.

Speed control and the tilt steering column are available as part of the luxury convenience group.

LX Hatchback/Wagon semi-styled steel wheel with full luxury wheel cover; GT styled aluminum wheel; standard semi-styled steel wheel with center cap.

PRODUCT CHANGES

Following publication of the catalog, certain changes in standard equipment, options, prices and the like, or product delays, may have occurred which would not be included in these pages. Your Ford Dealer is your best source for up-to-date information.

Ford Division reserves the right to change product specifications at any time without incurring obligations.

MAJOR STANDARD FEATURES

Escort 2-Door Hatchback

- Side window demisters
- Tinted glass
- 4-spd. heater/defroster with rear ducts
- Temperature gauge, trip odometer
- 2-speed wipers with fixed interval
- Automatic front shoulder belt restraint system with manual lap belts, rear seat outboard lap/shoulder belts and center lap belt
- Removable cargo area cover
- Full door trim with armrest and map pocket
- Glove box
- Console with bin and cup holders
- Soft wraparound instrument panel
- Passenger visor mirror
- Low-back cloth and vinyl reclining bucket seats, full-fold rear seat
- Two-spoke, soft-feel steering wheel
- Aerodynamic halogen headlamps
- Flip-out quarter windows
- Driver's side remote-control mirror

LX (in addition to or in place of standard items)

- Color-keyed bumpers (sedan only)
- Safety rear door locks (4-doors)
- Electronic AM/FM stereo radio with integral clock (may be deleted for credit)
- Styled armrest, cloth insert and lower carpet on door trim
- Low-back luxury cloth and vinyl reclining bucket seats
- Split/fold (60/40) rear seat
- Bodyside protection moldings
- Full luxury wheel covers
- Variable interval wipers (sedan only)

LX-E (in addition to or in place of LX items)

- Dual electric remote-control mirrors
- Light/convenience group
- Console with bin, removable cupholder tray
- Illuminated visor mirrors
- Sport cluster with tachometer
- Sport performance cloth reclining bucket seats/integral rear seat head restraints and driver's seat height adjustment
- Sport steering wheel with hand grips
- Remote-control decklid, fuel door releases
- Electronic AM/FM stereo radio with cassette/clock (may be deleted for credit)
- Rear reflex applique

GT (in addition to or in place of LX-E items)

- Asymmetrical grille
- Fog lamps
- Rocker panel cladding
- Rear spoiler
- Color-keyed bodyside moldings

SPECIFICATIONS

Standard Escort and LX

- 1.9 liter overhead-cam in-line 4-cylinder engine with 88 horsepower at 4,400 rpm and 108 lb. ft. of torque at 3,800 rpm
- 9.0:1 compression ratio
- Sequential electronic fuel injection
- Distributorless ignition system
- EEC-IV electronic engine control
- 11.9-gallon fuel capacity
- 5-speed manual overdrive transaxle (4-speed automatic overdrive optional)
- Strut-type independent front suspension with upper strut-mounted coil springs and stabilizer bar
- Strut-type independent twin trapezoidal link rear suspension with upper strut-mounted coil springs and stabilizer bar
- Manual rack-and-pinion steering, 23.7:1 overall ratio (power 17.0:1 overall ratio available)
- Four-wheel hydraulic, power front disc/rear drum brakes
- Semi-styled stamped steel wheels, 13"x5.0" (14" on sedan)

P175/70R13 BSW all-season tires

P175/65R14 BSW all-season tires (sedan)

LX-E and GT

- 1.8 liter dual-overhead-cam 16-valve 4-cylinder engine with 127 horsepower at 6,500 rpm and 114 lb.ft. of torque at 4,500 rpm
- 9.0:1 compression ratio
- Multiple-port electronic fuel injection
- Breakerless electronic ignition system
- 13.2-gallon fuel capacity
- 5-speed manual overdrive transaxle (4-speed automatic overdrive optional)
- Handling front suspension, larger stabilizer bar
- Handling rear suspension, larger stabilizer bar
- Power rack-and-pinion steering, 17.0:1 overall ratio
- Four-wheel hydraulic, power disc brakes
- Styled aluminum wheels, 14"x5.5" (LX-E)
- Styled aluminum wheels, 15"x5.5" (GT)
- P185/60R14 82H performance tires (LX-E)
- P185/60R15 84H performance tires (GT)

PREFERRED EQUIPMENT PACKAGES

Note: Package content is subject to change.
X = Included in package S = Standard O = Optional

	Standard 315A	LX 320A	LX-E Sedan 325A	GT 330A
Light/convenience group: Includes dual electric remote-control mirrors, remote fuel door/decklid releases, removable cupholder tray, dual map lights, cargo area light, engine compartment light, "headlamps on" warning chime, illuminated visor mirrors, illuminated ignition key bezel, and rear courtesy light switch for dome lamp (4-door models)		X	S	S
Rear window defroster	O	X	X	X
Power steering		X	S	S
Air conditioning		O	X	X
Luxury convenience group: Includes tachometer, tilt steering column, and speed control		O	X	X
Power equipment group: Includes tachometer, power windows and door locks (4-door models)		O	O	
Cayman decor group: Includes Cayman Green exterior color, color-keyed wheels, leather-wrapped steering wheel, front floor mats, and special seat and door trim				O
Power moonroof (sedans and hatchbacks)		O	O	O
Clearcoat paint	O	O	O	O
GL comfort group: Includes air conditioning and power steering	O			
Wagon group: Includes deluxe luggage rack and rear window wiper/washer (wagon only)		O		
AM/FM stereo radio	O	S		
AM/FM stereo radio with cassette tape	O	O	S	S
Premium sound system	O	O	O	O

COLORS AND TRIMS

Exterior Paint Colors

Standard Escort and LX	Interior Trim Colors			
	Titanium	Crystal Blue	Scarlet Red	Light Sandalwood
Alabaster*				■
Cabernet Red*	■		■	
Bright Red*	■		■	
Black	■		■	■
Oxford White	■	■	■	■
Wild Strawberry Clearcoat Metallic	■		■	
Crystal Blue Clearcoat Metallic**		■		
Twilight Blue Clearcoat Metallic	■	■		
Ultra Blue Clearcoat Metallic*	■			
Light Titanium Clearcoat Metallic	■	■	■	

LX-E

Black	■
Oxford White	■
Wild Strawberry Clearcoat Metallic	■
Crystal Blue Clearcoat Metallic	■
Twilight Blue Clearcoat Metallic	■
Light Titanium Clearcoat Metallic	■

GT

Bright Red	■
Black	■
Oxford White	■
Cayman Green Clearcoat Metallic†	■
Ultra Blue Clearcoat Metallic	■
Light Titanium Clearcoat Metallic	■

*Not available on LX 4-Door Sedan. **Not available on standard Escort. †Available only with Cayman decor group.

DIMENSIONS

	2-Doors	4-Dr. Hatchback	4-Dr. Sedan	Wagon
Wheelbase	98.4"	98.4"	98.4"	98.4"
Length	170.0"	170.0"	170.9"	171.3"
Height	52.5"	52.5"	52.7"	53.6"
Width	66.7"	66.7"	66.7"	66.7"
Front tread	56.5"	56.5"	56.5"	56.5"
Rear tread	56.5"	56.5"	56.5"	56.5"
Trunk or cargo volume (cu. ft.)*	35.2	36.0	12.1†	66.9
Passenger capacity	5	5	5	5

*With rear seat back(s) folded down. †With rear seat back up.

6-YEAR/100,000-MILE CORROSION PROTECTION

Corrosion warranty coverage for outer body panel rust-through is 6 years or 100,000 miles, whichever comes first. See your Ford Dealer for a copy of this limited warranty.



Optional Ford Extended Service Plans cover major components on new Ford cars and light trucks for longer than the vehicle's basic warranty. Your Ford Dealer has full details.

MOTORCRAFT REPLACEMENT PARTS

Genuine Ford and Motorcraft original equipment replacement parts meet the

same high standards as those installed in production.



Ford Credit's Red Carpet Lease® program makes driving a new Ford even more pleasurable. With it, qualified lessees can drive a new car or truck every few years, and can generally select a more expensive vehicle (or one with more options) at a lower monthly payment. See your dealer today for details on Red Carpet Lease.

OPTIONS AVAILABILITY

Options shown or described in this catalog are available at extra cost and may be offered only in combination with other options or subject to additional ordering requirements or limitations.

