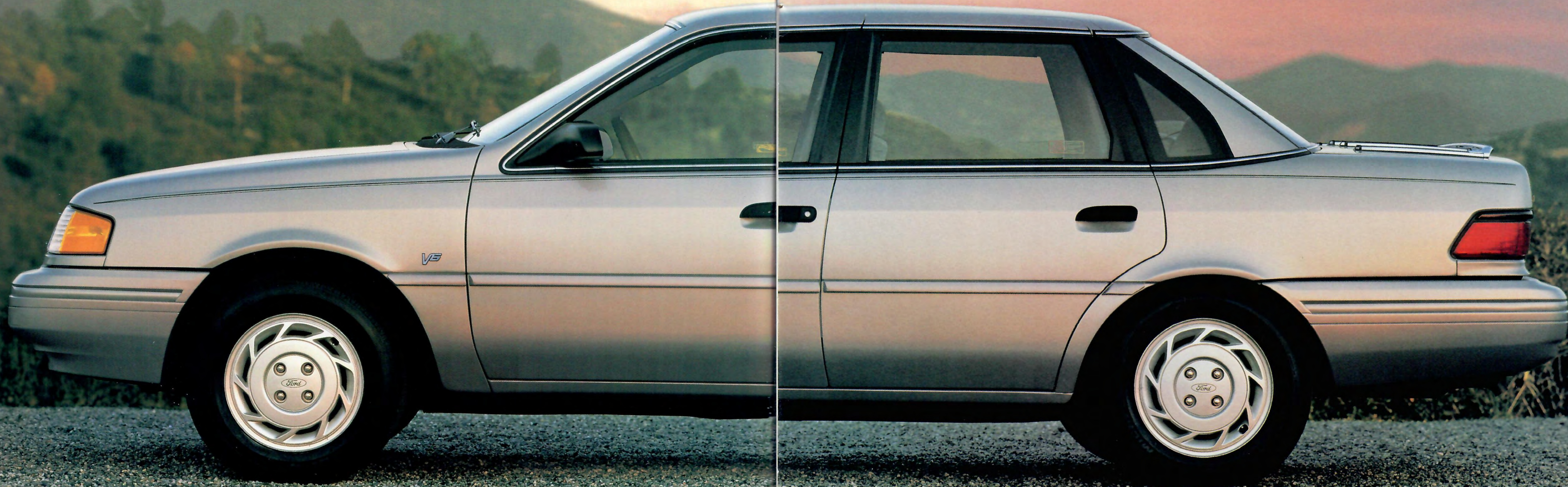


FORD

'93

TEMPO





More than just excellent transportation, Tempo must offer a rewarding driving experience. That was the original vision behind its development. Tempo's appealing combination of comfort, performance and style is impressive in itself. But factor in its reputation for solid value and you really begin

to see why it's been such a popular choice through the years by people all over America. Tempo's computer design helps put available space to efficient use for surprising comfort. The 4-wheel independent suspension with nitrogen gas-pressurized hydraulic struts front and rear

delivers a pleasing ride. Under the hood is the 2.3L HSC 4-cylinder engine with sequential electronic fuel injection — a fine balance of responsiveness and economy. And the smooth power of the 3.0L V-6 is optional with all models (it's included in the LX Preferred Equipment Package).

Tempo LX 4-Door Sedan in optional Silver Clearcoat Metallic shown with the LX Preferred Equipment Package.

TEMPO LX

Conveniences such as a tilt steering wheel, dual electric remote mirrors, illuminated entry system, fold-down front center armrest, cargo tie-down net, electronic AM/FM stereo radio with digital clock, the light group and the power lock group are some of the items that help define the comfort-oriented Tempo LX. Luxury-grade cloth upholstery is standard, as are luxury-weight carpeting and front and rear floor mats.

The 2.3L I-4 engine is equipped with sequential electronic fuel injection (SEFI) for improved driveability. Or opt for the smooth and responsive 3.0L SEFI V-6 with its special LX touring suspension and an added rear stabilizer bar, larger front stabilizer bar and special hydraulic strut tuning to enhance the standard four-wheel independent system for a more controlled ride. The 3.0L engine is included in the LX Preferred Equipment Package along with a 3-speed automatic transaxle (a 5-speed manual is also available).

The 1993 Tempo LX. It offers performance, comfort and convenience extras to go along with all the value people have come to expect from this proven, popular 5-passenger automobile.

Tempo LX interior in Opal Grey shown with the LX Preferred Equipment Package and items of optional equipment.



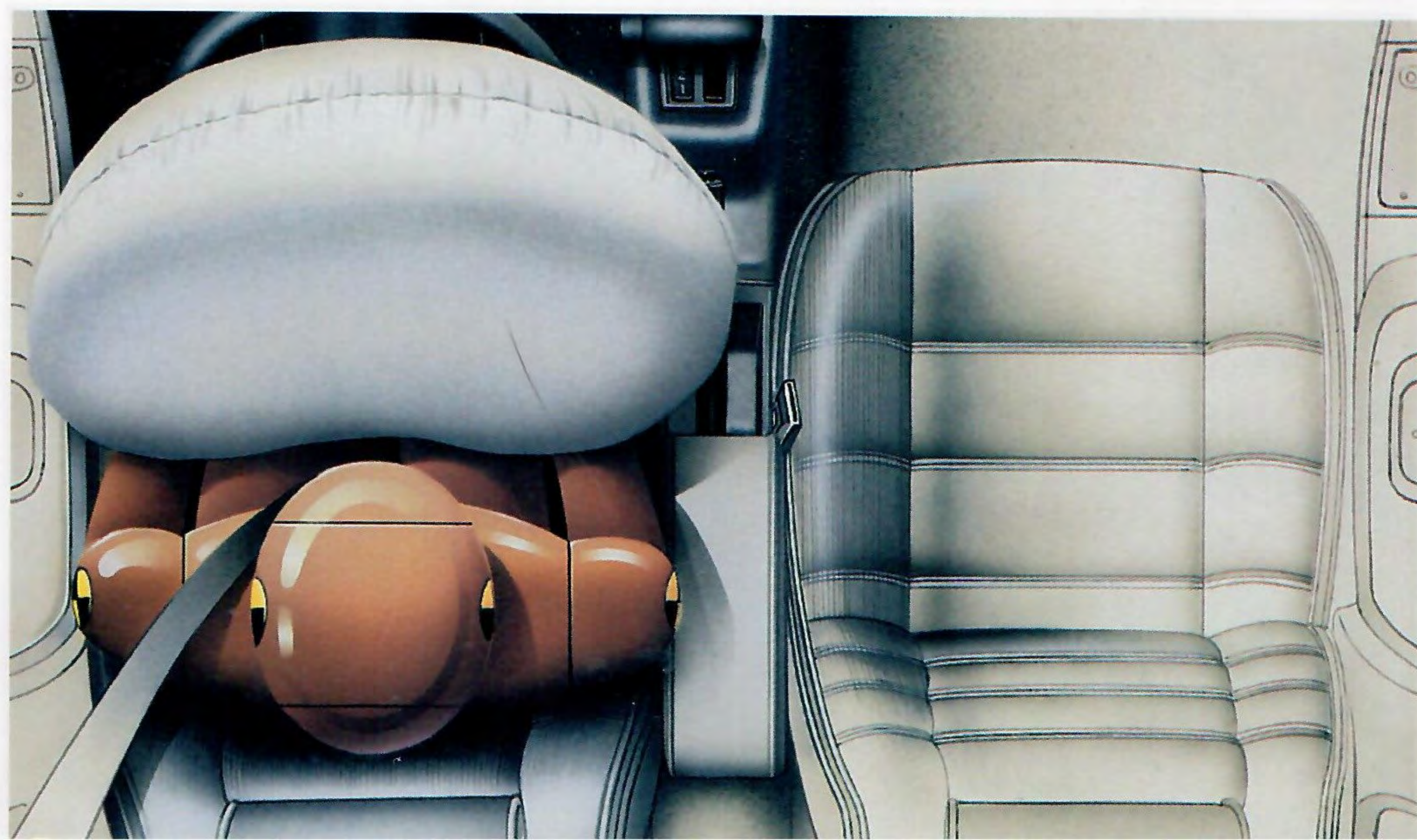
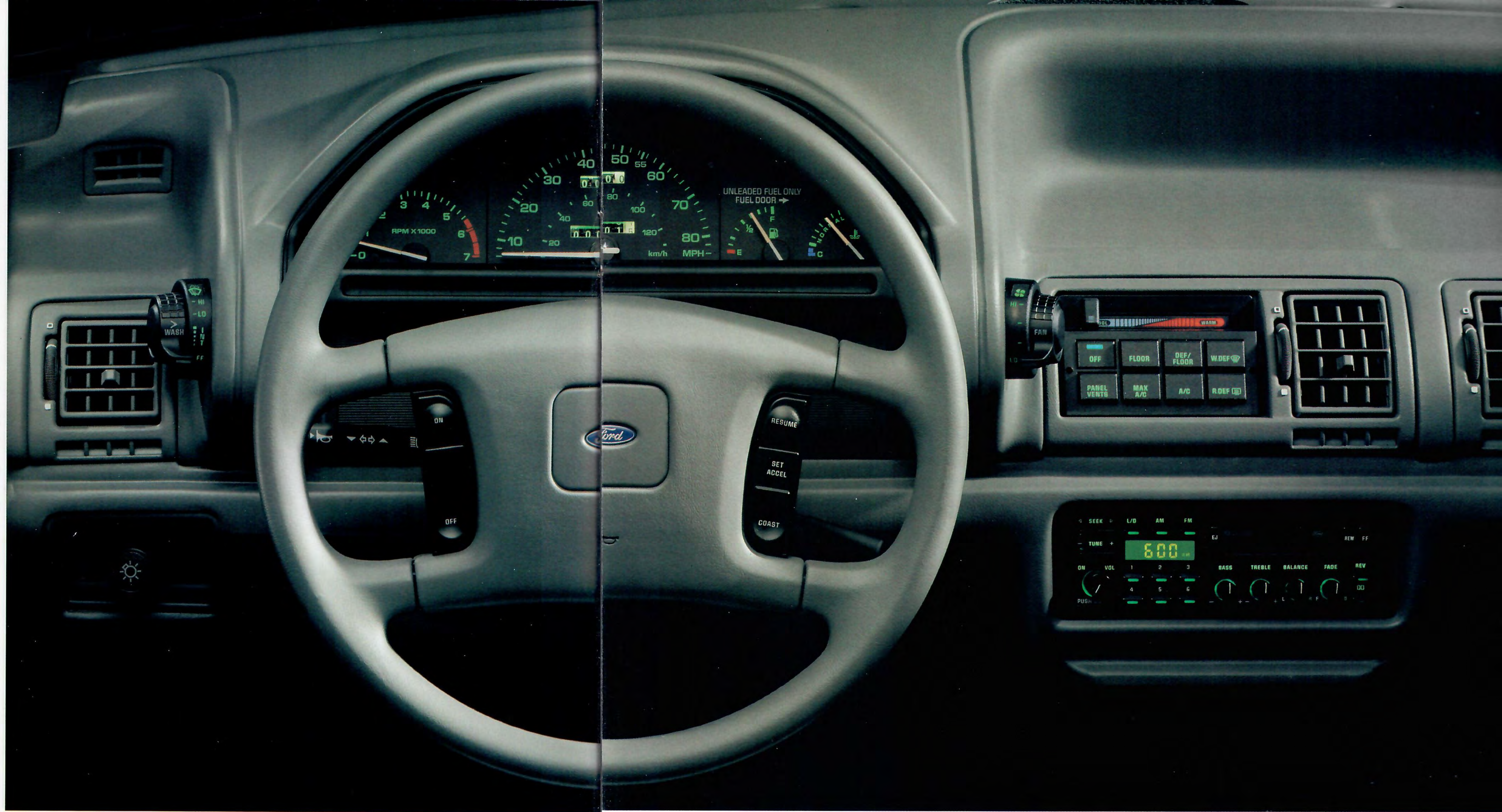
TEMPO COMMAND

Tempo, like all Ford cars, is carefully designed around its occupants — you and your passengers. Controls are arranged based on frequency of use and immediacy of need, and they're designed for optimum convenience. The controls for the optional speed control are a good example. Located on the steering wheel, they can be operated without taking your hands from it. And they're tactile — they can be operated by feel.

The push-button climate control system with rotary fan control includes four dash-mounted air registers that adjust for direction and flow. Demisters help keep the side windows free of condensation. Air conditioning is included in all Tempo Preferred Equipment Packages.

Tempo's speedometer, fuel and temperature gauges are large and easy to read. With the headlamps on, they're backlit with lighted pointers (a pleasant chime alerts you should you forget to turn the headlamps off). Rotary windshield wiper controls include a variable-interval feature. The LX sport instrument cluster (shown) includes a tachometer and trip odometer along with "door ajar" and "decklid ajar" reminder lights.

To help prevent injury in certain moderate to severe frontal impacts, Tempo's driver-side air bag supplemental restraint system (SRS) is optional with all models (see description at right).



Available with both 2-door and 4-door models, Tempo's optional driver-side air bag supplemental restraint system (SRS) is designed to activate in a frontal impact roughly equivalent to striking a parked car at 28 mph. From impact to full deployment, it inflates in less than 1/10 of a second. And it also begins deflating in a fraction of a second. Remember, the air bag is intended to supplement, not replace, the lap/shoulder belt. Be sure to always buckle up for safety.

Tempo LX instrument panel in Opal Grey shown with the LX Preferred Equipment Package and items of optional equipment.

TEMPO GL



Above: Tempo GL 4-Door in optional Electric Red Clearcoat Metallic shown with Preferred Equipment Package 226A.

Ever since its introduction, the Tempo GL has skillfully gone about the business of doing what it was designed to do best: provide more product, comfort and performance value than might ordinarily be expected (that's especially true with the GL Preferred Equipment Packages). Drivers of smaller cars can move up to the Tempo GL and benefit from its fuel-efficient 2.3

liter high-swirl combustion (HSC) 4-cylinder engine while enjoying the expanse of its roomy 5-passenger interior compartment (EPA mileage estimates were unavailable at time of printing). Likewise, those who are accustomed to driving larger cars will appreciate the way Ford designers, with the aid of advanced computer design technology, have made the best use of available

space to provide an unexpected level of comfort. And Tempo's optional 3.0L SEFI V-6 can respond quickly and confidently to the driver's input. Both the 2.3L HSC 4-cylinder and the 3.0L V-6 engines incorporate state-of-the-art sequential electronic multiple-port fuel injection (SEFI), a major technological performance feature that makes fuel metering more precise and efficient.



Left: Tempo GL 2-Door shown in Black with Preferred Equipment Package 226A.

TEMPO EQUIPMENT

Value is what Ford Tempo is all about. And there's plenty of value to be found in the Tempo Preferred Equipment Packages.

These packages, detailed on the next page, not only make it easy to order a well-equipped Tempo, they offer savings on select features. Compared with the individual prices of the items, the packages provide a substantial discount. To further personalize the Ford Tempo model of your choice, choose from the selection of options available individually.

Features shown on this page are just a few of Tempo's wide range of comfort and convenience options. You'll find that some are already included in select Preferred Equipment Packages. Features are subject to change during the year. For the latest information, see your Ford Dealer.

Speed controls are located within easy reach on the steering wheel.



The power driver's seat provides forward/back and vertical height adjustment at the touch of a switch.



Tempo's 3-speed automatic transaxle is optional with both the 2.3L I-4 and 3.0L V-6 engines.



The power of the 3.0L V-6 engine is available with all models (included in LX Preferred Equipment Package 233A).



Power lock group, with controls positioned on a convenient door panel.



The standard consolelette now includes a handy cupholder.



The decklid luggage rack is not only a practical feature, but a stylish one as well.



Left to right: deluxe wheel covers and polycast wheels.

MAJOR STANDARD FEATURES

Exterior

Aerodynamic halogen headlamps with "on" alert chimes
Wraparound taillamps/back-up lights
Tinted glass
Manual left-hand sail-mounted outside mirror (GL); dual electric remote control mirrors (LX)
14" deluxe wheel covers (GL); 14" polycast wheels (LX)

Interior

Five-passenger seating
Cloth low-back reclining bucket seats (GL); upgraded cloth trim (LX)
Carpeting: deluxe (GL); luxury (LX)
Ashtrays, front and rear
Automatic shoulder belt restraint system with manual lap belt for front passengers
Manual lap/shoulder belts for outboard rear seating positions; lap belt for center rear occupant
Lockable glove box
Consolelette with cupholder
Footwell illumination and luggage compartment light (GL); illuminated entry system (LX)
Cigarette lighter
Day/night rearview mirror
Dual sun visor mirrors with covers
Color-keyed steering wheel
Instrument panel — includes side window demisters, backlit cluster, lighted pointers, temperature gauge, pod-mounted rotary windshield wiper switch, rotary climate control fan switch, positive air duct shut-offs
Electronic AM/FM stereo radio with digital clock (may be deleted for credit)
Cargo volume: 13.2 cu. ft. (2-Door); 12.9 cu. ft. (4-Door)

Functional

Front-wheel drive
Four-wheel independent suspension with nitrogen gas-pressurized hydraulic struts
Engine type: 2.3LHSC I-4
Induction system: sequential multiple-port electronic fuel injection
Electronic engine controls (EEC-IV)
Steering: power rack-and-pinion (18.3:1 on-center ratio)
Two-speed windshield wipers with variable interval feature
Brakes: power front disc/rear drum, dual hydraulic split diagonal
Fuel tank: 15.9 gallons
Heavy-duty maintenance-free battery
Luxury sound insulation

PRODUCT CHANGES

Following publication of the catalog, certain changes in standard equipment, options, prices and the like, or product delays, may have occurred which would not be included in these pages. Your Ford Dealer is your best source for up-to-date information.

Ford Division reserves the right to change product specifications at any time without incurring obligations.

PREFERRED EQUIPMENT PACKAGES AND OPTIONS

Note: Package content is subject to change.
P = Included in package S = Standard O = Optional

Appearance/Comfort/Convenience/Safety

	GL 225A	GL 226A	GL 227A	LX 233A
Manual air conditioning	P	P	P	P
Light group: ashtray, glove box, engine compartment lights; dome light door switches; map light	P	P	P	S
Dual electric remote-control mirrors	P	P	P	S
Speed control	O	O	-	O
Tilt steering wheel	P	P	-	S
Rear window defroster	O	P	P	P
Front center armrest	O	P	P	S
Front floor mats	O	P	P	S
Rear floor mats	O	P	P	S
Power lock group: power door locks, power decklid release and remote fuel filler door	O	P	P	S
Power side windows (4-door model only)	-	O	O	O
Power driver's seat	-	O	O	O
Decklid luggage rack	O	O	O	P
Driver-side air bag supplemental restraint system (2.3L engine with automatic transmission only)	O	O	P	O
Sport instrument cluster: tachometer and trip odometer	-	O	O	S
Clearcoat paint	O	O	O	O

Stereo Systems

Electronic AM/FM stereo with cassette player, digital clock
Premium sound system: four upgraded speakers and amplifier

Performance

2.3L SEFI I-4 with 5-speed manual transaxle
2.3L SEFI I-4 with 3-speed automatic transaxle
3.0L SEFI V-6 with 5-speed manual transaxle
3.0L SEFI V-6 with 3-speed automatic transaxle

Tires and Wheels

P185/70R14 BSW
P185/70R14 BSW Performance
P185/70R14 WSW Performance
Polycast wheels

COLORS

Exterior Paint Colors	Interior Trim Colors			
	Opal Grey	Crystal Blue	Ruby Red	Mocha
Black	■	■	■	■
Oxford White	■	■	■	■
Bright Red	■	■	■	■
Light Blue ⁽¹⁾	■	■	■	■
Cayman Green Clearcoat Metallic	■	■	■	■
Caribbean Green Clearcoat Metallic ⁽¹⁾	■	■	■	■
Bimini Blue Clearcoat Metallic	■	■	■	■
Opal Grey Clearcoat Metallic	■	■	■	■
Twilight Blue Clearcoat Metallic ⁽¹⁾	■	■	■	■
Electric Red Clearcoat Metallic ⁽¹⁾	■	■	■	■
Silver Clearcoat Metallic ⁽¹⁾	■	■	■	■
Mocha Frost Clearcoat Metallic ⁽¹⁾	■	■	■	■

(1) Not available on GL 2-door model. See your dealer for details.

BUMPER-TO-BUMPER COVERAGE

The 36-month/36,000-mile bumper-to-bumper coverage of Ford's new vehicle limited warranty covers the complete vehicle (except tires, battery, service adjustments and other items covered under separate provisions) against defects in factory-supplied materials or workmanship. For complete information, see your Ford Dealer.



Optional Ford Extended Service Plans can cover major

components on new Ford cars and light trucks for longer than the vehicle's basic warranty. Your dealer has full details.

SPECIFY GENUINE FORD COLLISION REPAIR PARTS

Genuine Ford sheet metal and plastic replacement collision parts, such as hood, doors, fenders and bumper components, are the right choice — and for all the right reasons. Genuine Ford parts are equal to original parts in fit, finish, structural integrity and corrosion protection. Ford parts are the same as those used on new vehicles which are certified to meet all Federal Motor Vehicle Safety Standards. And all Ford sheet metal parts are covered by the exclusive Ford Lifelong Sheet Metal Guarantee. Ask your dealer to see a copy of this limited warranty. Don't settle for imitations. Ask your insurer to authorize genuine Ford collision parts.



Ford Credit offers advantageous financing and leasing arrangements for qualified

customers, plus the convenience of making them right where you buy or lease your car — at your Ford Dealer.

OPTIONS AVAILABILITY

Options shown or described in this catalog are available at extra cost and may be offered only in combination with other options or subject to additional ordering requirements or limitations.

