

1995 FORD

PROBE





1995 PROBE

The very look of Probe GT says driving enjoyment: The fluid contours of the sleek, aerodynamic body. The unique front and rear fascia treatments, fog lamps and lower bodyside cladding. The 5-spoke directional cast aluminum wheels. The high-performance 16" tires.

But exciting power and exceptional handling are definitely what make it all happen.

GT's responsive 24-valve, DOHC, multiport fuel-injected 2.5-liter V-6 puts out 164 horsepower (SAE rating) at 5,600 rpm and 160 lbs.-ft./torque at 4,800 rpm.

BUILT TO HANDLE THE ROAD

The sport-tuned 4-wheel independent suspension and low-profile, wide-stance P225/50R16 91V radials deliver tight handling capability. Four-wheel disc brakes are standard and an anti-lock system is optional (included with Package 263A).

Probe GT is designed for driving comfort, too, with a driver's seat that features power lumbar and seat back side bolster adjustments.

GT Package 263A offers such popular items as a rear window wiper/washer, AM/FM stereo with cassette, illuminated entry, remote keyless entry, air conditioning, speed control and power windows and locks.

GT *The sleek Probe GT, with its 24-valve V-6 engine, has a no-nonsense approach to driving. It's shown here in Laser Red Tinted Clearcoat Metallic.*

PROBE ERGONOMICS

The aerodynamic shape of its body shell is important to a well-crafted sports coupe like Probe. Style and function, however, are every bit as important *inside*. A well-designed interior is essential to the total driving experience.

SUPERB ERGONOMICS

Notice how the Probe's instrument and door panels are smoothly integrated, as though they were a single piece. Take note, too, of how the center



Probe's performance instrumentation includes a tachometer, temperature gauge, oil pressure gauge and voltmeter.

stack is angled toward the driver, a design that's not only pleasing to the eye, but which also helps make operating the car even more convenient.

Seating is body-contoured for comfort. The shift lever is carefully located in relation to the driver's position. Important operating information on the driver-oriented instrument

panel is located directly in your line of sight beneath a low windshield cowl line. The instrument cluster features the clarity of analog gauges, including a tachometer, fuel gauge, water temperature gauge, oil pressure gauge and voltmeter.

The controls, some situated on steering column levers, are easy to reach and operate so that you can better concentrate your attention on the road.

When you drive as comfortably and conveniently as you do at the wheel of a Ford Probe, you're in full command of the car and the road. Which is the ultimate goal of the engineers in the design of a performance car.

DUAL AIR BAGS STANDARD

Probe is designed not only for your driving enjoyment, but for your safety and the safety of your passengers.

Probe's "operating safety" features — the suspension, steering and braking systems, for example — can help you avoid an accident (see discussion on page 12). And there are the "occupant safety" features designed to protect you in the event of an accident. Especially important are the standard driver and front passenger air bags (important as the air bags are, however, they're intended only to supplement your lap and shoulder safety belts, so be sure always to buckle up).



The available Group 4 includes a remote keyless entry system. Two controllers are furnished.



A premium sound audio system with AM/FM compact disc radio is optional with all Probe models.



Left: The Probe GT interior in Saddle with optional leather seating surfaces. Driver seat power lumbar/seat back side bolster adjust and a leather-wrapped manual transaxle shift lever are GT standard features.



Top to bottom: Dual electric remote mirrors are included with Probe Preferred Equipment Packages 253A, 261A and 263A.

On the center panel console are heating/cooling, stereo system and other controls. This center stack is angled toward the driver, an important ergonomic feature.

50/50 split rear seat backs can be lowered individually, allowing for added cargo either with or without a third passenger.

PROBE SE



The initials stand for Sport Edition, and the dynamic look of the Probe SE underscores this appropriate nomenclature. It has the same sculpted front end treatment as the sleek GT model. It also has bodyside moldings that match the body color. Specially styled 15" alu-

minum wheels are matched with P205/55R15 87S BSW all-season radial tires and include a special sports suspension.

SE FEATURES

The Probe SE Preferred Equipment Package also offers a lot in the way of comfort and convenience items. Air conditioning. A rear window defroster. Dual

electric remote-control outside mirrors. Power side windows with a handy driver's side "express down" feature. Power door locks. Speed control. The premium sound audio system features an AM/FM stereo radio with digital clock, cassette tape player and power antenna.

SE *Probe SE, with its distinctive front fascia and special cast aluminum wheels, is shown in Vibrant White.*

PROBE

With its 4-wheel independent suspension system and 16-valve, DOHC 2.0-liter engine, Probe is an exciting performer. And it can generate a whole lot of driving fun.

Playing no small part in Probe's excellent overall performance is a beautifully sculpted aerodynamic shape that requires less horsepower to overcome the inhibiting force of air drag at cruising speeds. Also, air flow is redirected over the body in such a way as to increase downforce on the tires for better handling.

A WELL-EQUIPPED CAR

Probe sports a great list of standard features, such as body-contoured, reclining bucket seats with "memory" feature, the clarity of analog gauges, an electronic AM/FM stereo sound system and versatile 50/50 split fold-down rear seats, to mention a few.

And Probe comes equipped with standard driver and front passenger air bags (be sure always to buckle up your lap/shoulder safety belts). Four-wheel disc brakes with an anti-lock system are available as an option.

A unique combination of style and performance makes Ford Probe a sports coupe for those who take their driving fun quite seriously indeed.

Ford Probe in Seafoam Green Clearcoat Metallic. Some equipment shown may be optional.



PERFORMANCE

At the heart of Probe driving enjoyment are its responsive powerplants. The 2.0L I-4 is standard in Probe and Probe SE, and the 2.5L V-6 is under the hood of the spirited Probe GT.

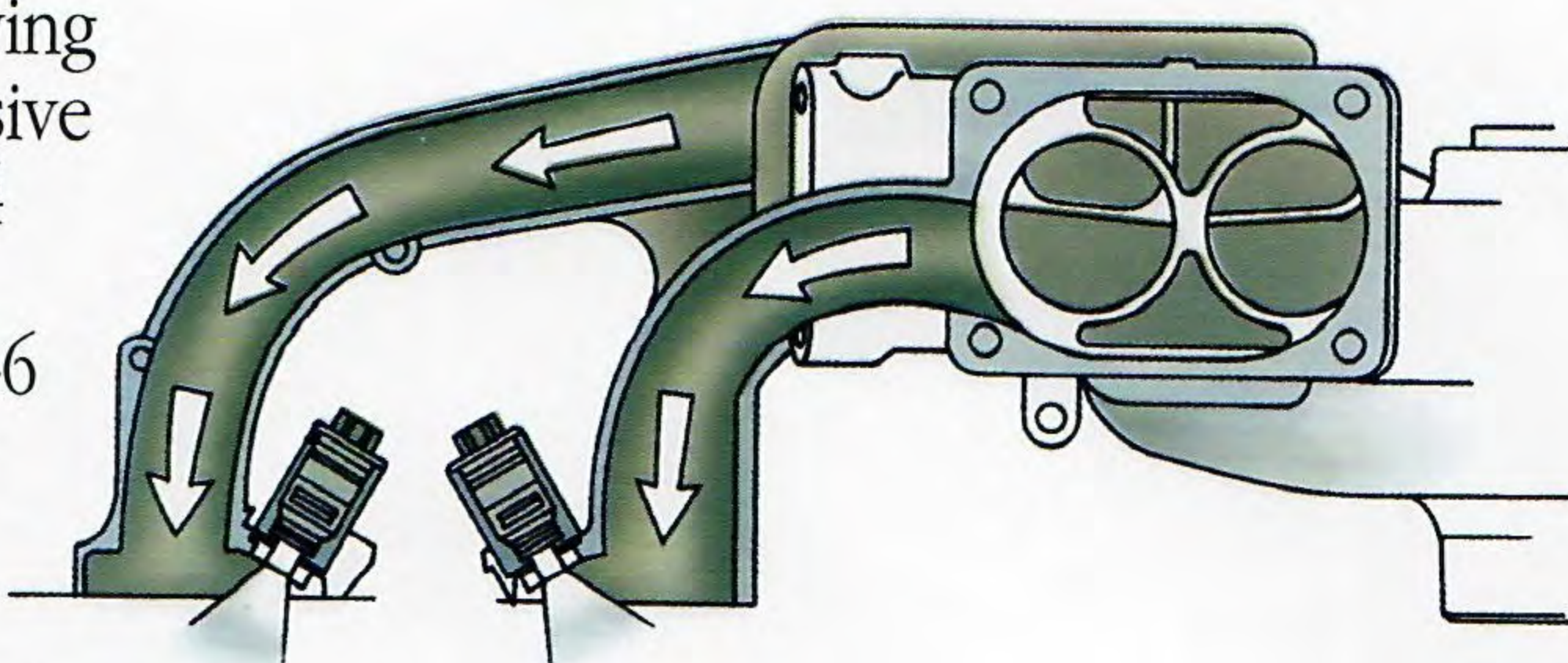
Though comparatively small in displacement, each of these sophisticated multi-valve engines delivers excellent all-around performance.

Especially impressive is the V-6 in the Probe GT, which is but 2.5 liters in size yet is surprisingly powerful. It has exceptional power-efficiency as well: a high ratio of power (164 SAE net horsepower) to displacement (just 153 cubic inches). That

adds up to more than one horsepower per cubic inch.

MULTI-VALVE DESIGN

Both Probe powerplants employ the multi-valve technology long embraced by designers of racing engines as one of the best ways to increase power output without



having to increase engine displacement. Each cylinder has four valves (two for intake and two for exhaust) and belt-driven twin overhead camshafts (one activating the intake valves and the other the exhaust valves). This arrangement packs the fuel/air mixture into each cylinder for efficient combustion and exhaust.

The basic objective in the multi-valve design is to extract optimum power from every drop of fuel and to deliver responsive power and torque over the full performance range — from accelerating off the line to passing at highway speed.

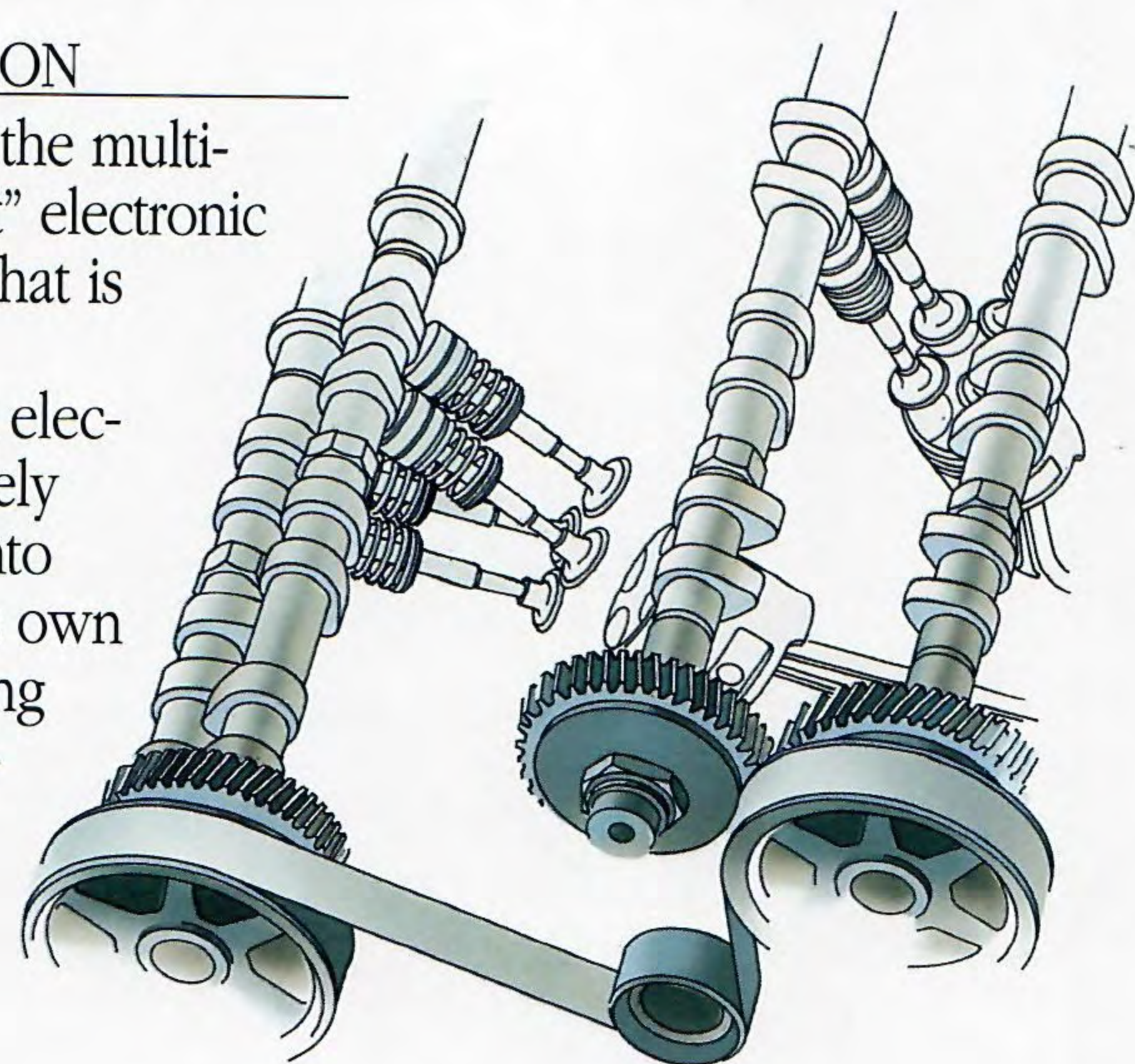
MULTI-PORT FUEL INJECTION

Integral to the success of the multi-valve design is a "multi-port" electronic fuel-injection (EFI) system that is controlled by a computer.

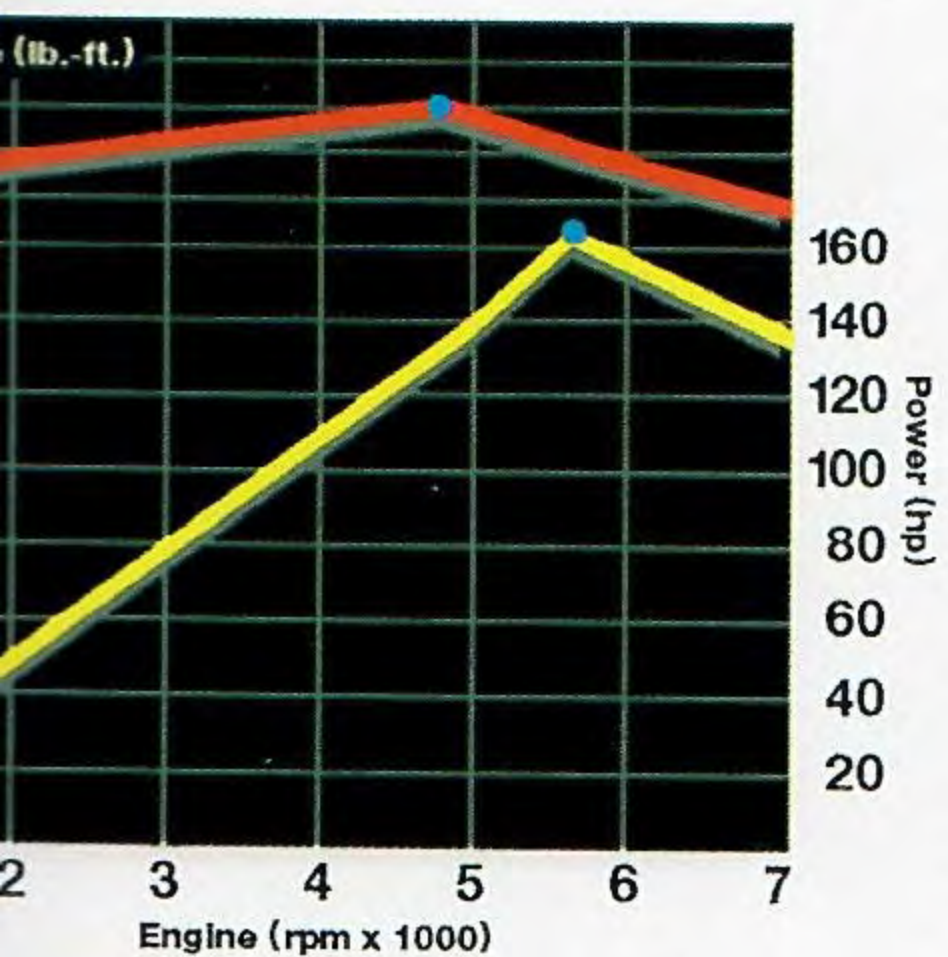
Multi-port EFI delivers an electronically controlled, precisely measured amount of fuel into each cylinder, which has its own injector. Precise fuel metering promotes clean, even burning of the fuel. And, especially important, it helps improve the engine's efficiency* while increasing power and response.

Left: Computer-controlled, multi-port electronic fuel injection provides precise fuel metering for efficiency and smooth operation (EPA mileage estimates unavailable at press time).

Below: Probe engines feature a design that uses four valves per cylinder (two for intake, two for exhaust), actuated by belt-driven dual overhead camshafts. The freer-breathing four valves (versus two) increase the flow and velocity of air into and out of the cylinder, promoting greater rapid-burn combustion and delivering higher power output. And the valves, each smaller and lighter, permit the use of low-tension springs, enabling the engine to reach higher rpm more quickly.



Probe GT's 24-valve, DOHC, multi-port fuel-injected 2.5-liter V-6 puts out 164 horsepower (SAE rating) @ 5,600 rpm and 160 lbs.-ft./torque @ 4,800 rpm.

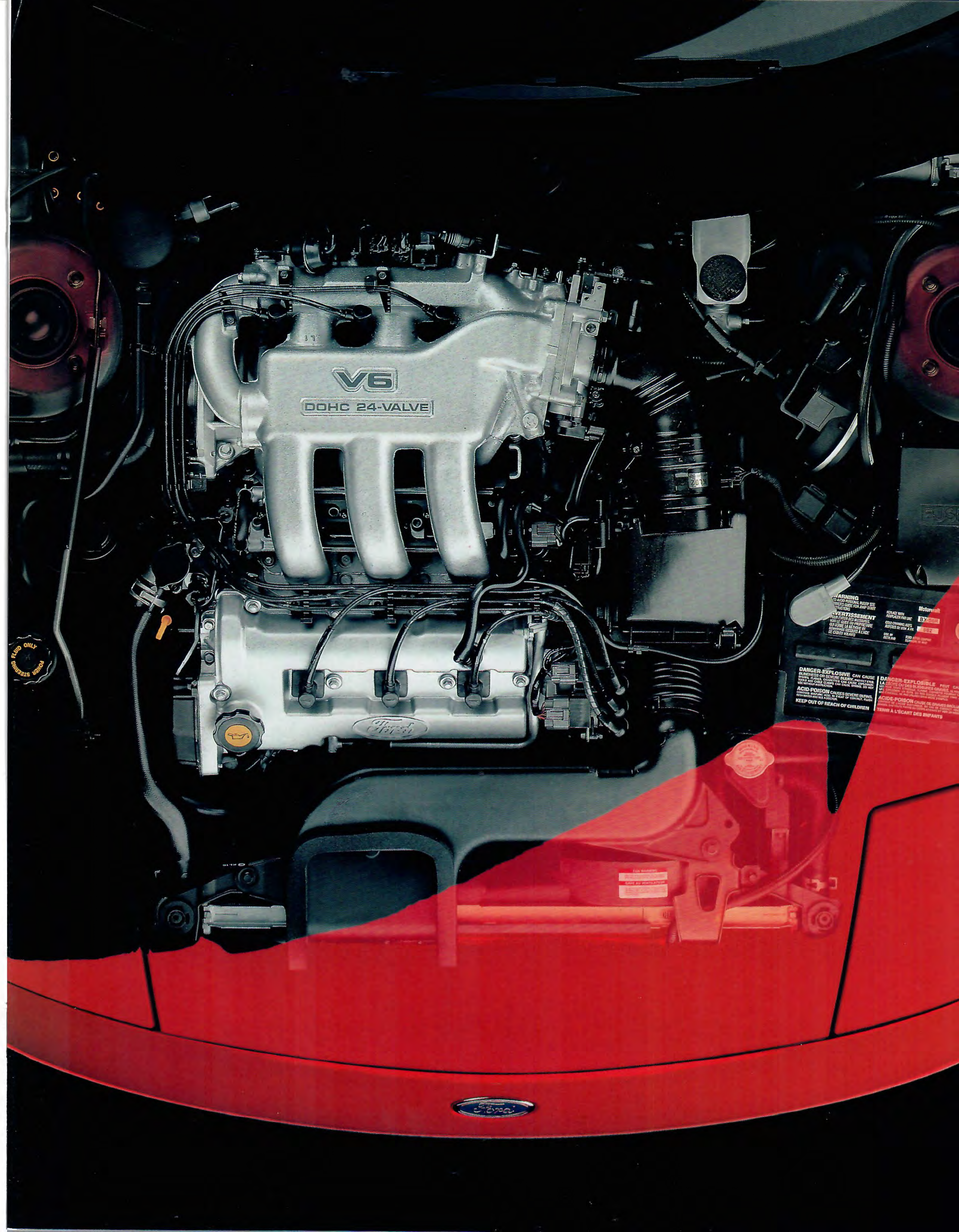


Above: The 2.5L V-6 engine is surprisingly powerful for its displacement with a high ratio of power (164 SAE net hp) to displacement (153 cubic inches). That's more than one horsepower per cubic inch.

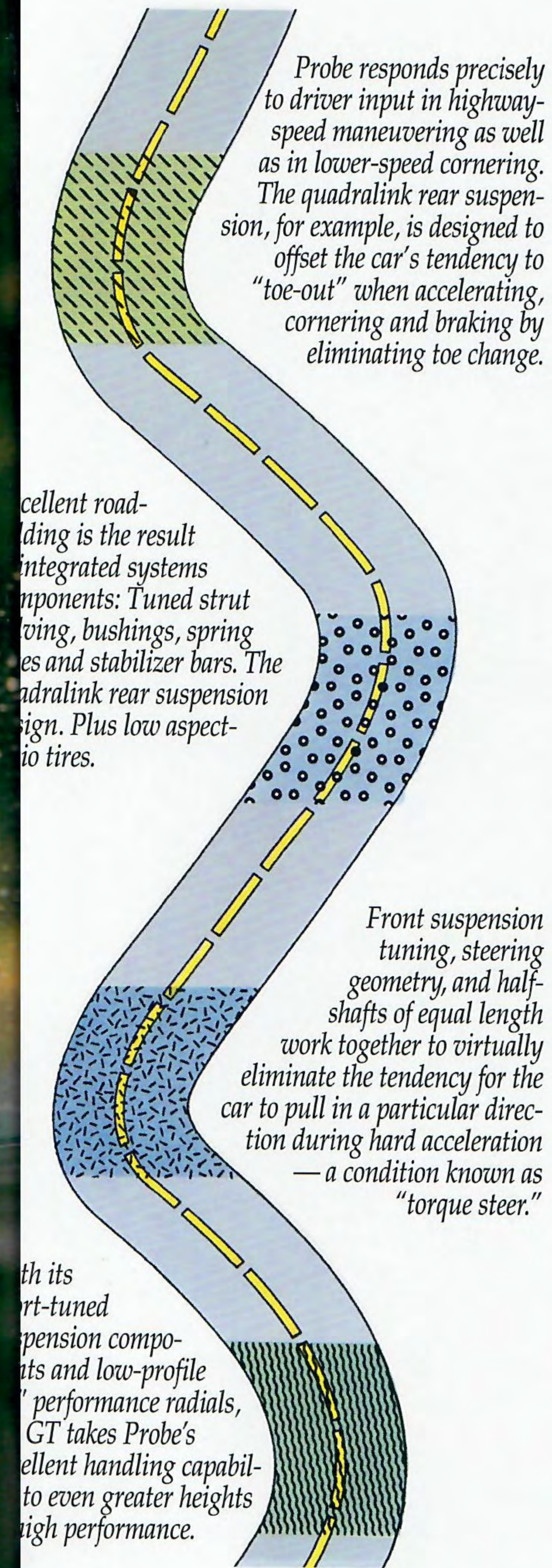


Right: GT features 16" directional cast aluminum wheels. Low-profile, wide-stance P225/50R16 91V radials deliver tight handling capability.

*EPA estimates were unavailable at press time. See your Ford Dealer for mileage information.



SAFETY & HANDLING



Probe is engineered to be driver-oriented in focus: Every aspect — power, handling, steering and braking — is viewed not as a distinct element, but rather as part of a total, integrated equation.

The 4-wheel independent suspension incorporates MacPherson struts and coil springs. The stabilizer bars, strut valving, spring rates and bushings are tuned for balanced ride quality and tight, solid handling.

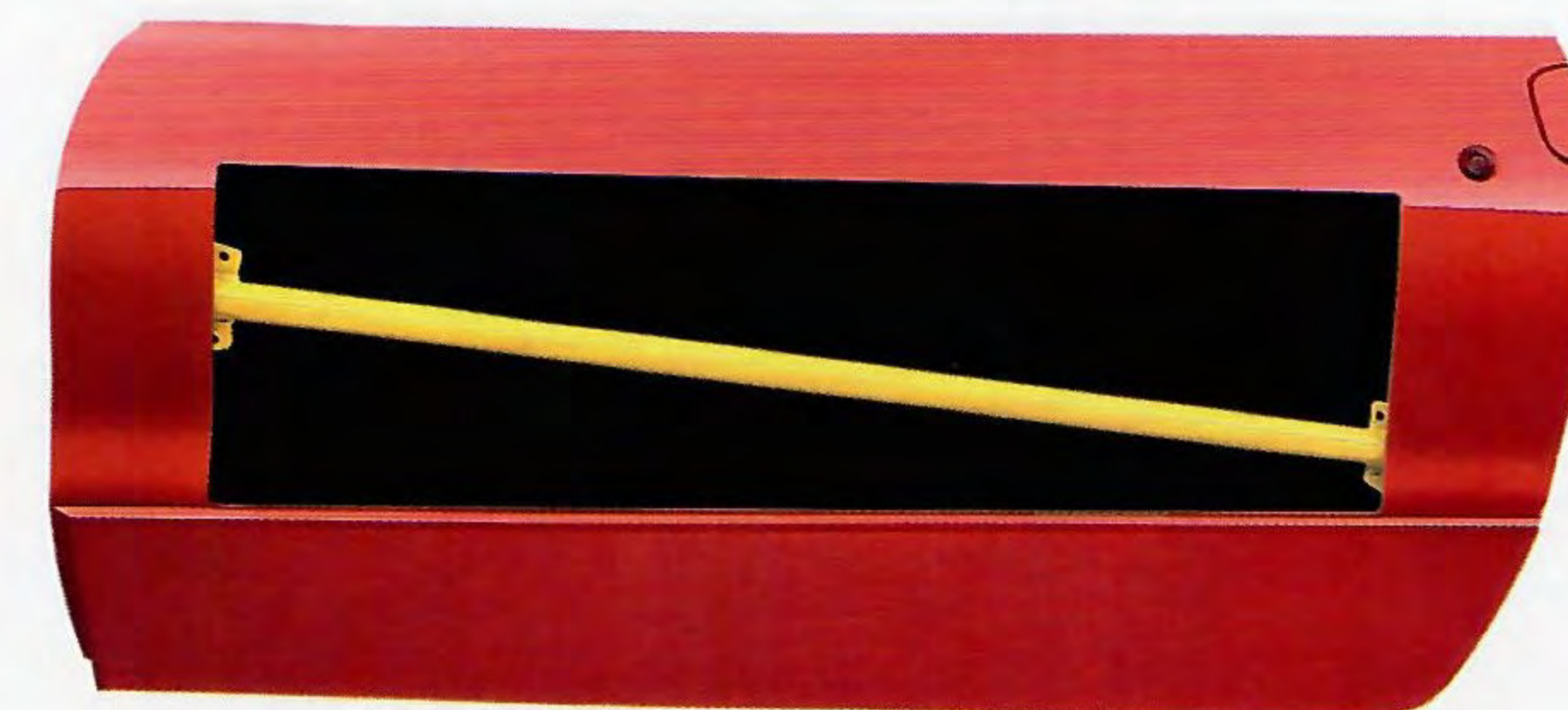
Probe has the traction of front-wheel drive. The rack-and-pinion power steering system is precise, and has a firm "on-center" feel.

RESPONSIVE BRAKING

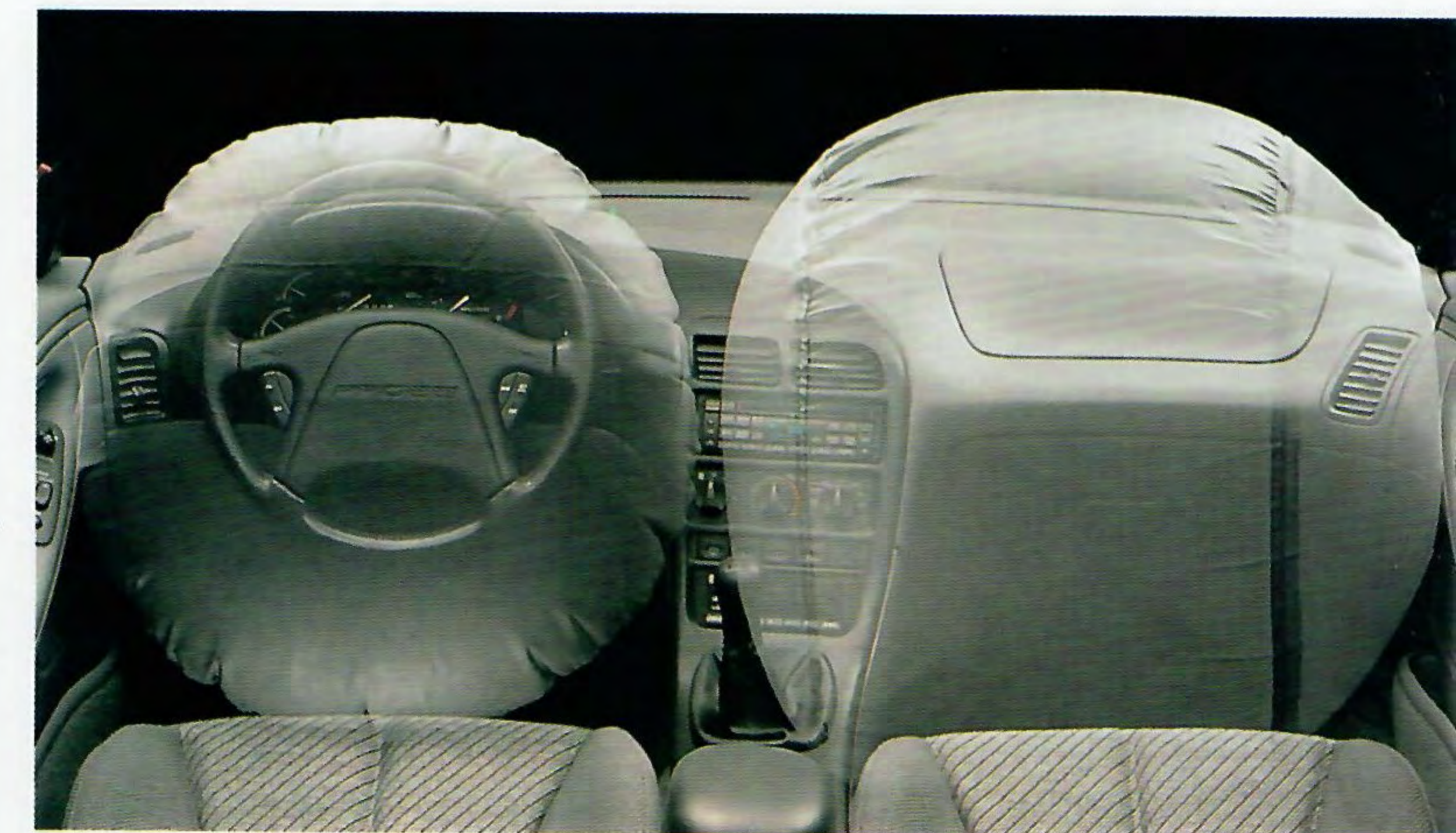
Probe's power front disc/rear drum brakes are responsive and resistant to fade. And for world-class stopping capability, there's the optional 4-wheel disc anti-lock brake system.

This system helps prevent the wheels from locking up in many hard braking situations or on slippery roads by applying and releasing the brakes at a rate of speed far exceeding that of human capability — up to 10 times per second while the brake pedal is firmly pressed. It's like a professional driver who skillfully "pumps" the brakes, only much faster.

Anti-lock braking helps provide greater steering control and smooth, straight stops under most driving conditions.



"Operating safety" features (steering, suspension and brake systems, for example) are engineered to help you avoid an accident. And there are "occupant safety" features (such as the driver and front passenger air bags) that are designed to provide protection in the event of an accident.



For added security, a remote keyless entry system with two controllers (shown on page 4) is part of the optional Group 4. An anti-theft system (above) is available with GT.

Left: All Probe models feature side door intrusion beams as standard equipment.

Probe and Probe SE have power-assisted front disc/rear drum brakes. The Probe GT comes with wheel discs (optional with Probe and SE).

Probe GT in Laser Red Clearcoat Metallic.

THE OWNERSHIP EXPERIENCE



We've gone to great lengths to make the experience of driving a new Ford Probe enjoyable. The experience of ownership, too. We stand behind your car with our 36-month/36,000-mile bumper-to-bumper limited warranty. And we look after *you* with our no-cost Roadside Assistance Program. You can expect nothing less from a customer-driven company.

ROADSIDE ASSISTANCE PROGRAM

Every new Ford includes the assurance of an emergency no-cost Roadside Assistance Program provided by Ford Auto Club, Inc. during the 3-year/36,000-mile bumper-to-bumper

warranty period. Help is just a toll-free phone call away, 24 hours a day, anywhere in the 50 United States should you need any towing assistance, fuel delivery, tire change, a jump start, or even help when you're locked out of your car. Ask your Ford Dealer for complete details on the Ford Roadside Assistance Program and also for a copy of the limited warranty.

BUMPER-TO-BUMPER COVERAGE

The 36-month/36,000-mile bumper-to-bumper coverage of Ford's new vehicle limited warranty covers the complete vehicle (except tires, battery,

service adjustments and other items covered under separate provisions) against defects in factory-supplied materials or workmanship. For complete information, see your dealer.



Ford Credit is a full service company that makes a wide variety of financing and leasing programs available to qualified buyers through the Ford Dealer of your choice. Through Ford Credit's financing or Red Carpet leasing, arrangements suited to your special needs can be made quickly and conveniently right at the dealership. Ask

your dealer for the facts on any of Ford Credit's financing or lease plans.

FORD CITIBANK CREDIT CARD

Using your Ford Citibank Visa® or MasterCard® could earn you hundreds, even thousands of dollars from Ford toward the purchase or lease of a new Ford, Lincoln or Mercury product. To apply or get more information, call 1-800-374-7777. Or visit a Ford or Lincoln-Mercury Dealer, or a branch office of Citibank.



Optional Ford Extended Service Plans can cover major components

on new Ford cars and light trucks for longer than the vehicle's basic warranty. Your dealer has full details.

DEALER-INSTALLED ACCESSORIES

The enjoyment of owning a new car begins before you take delivery, when you're selecting colors and features. Along with the items on pages 16-17, there are Ford-brand accessories available at your dealer. They meet or exceed our strict specifications, and are custom designed and manufactured to complement the style and quality of your Ford-built vehicle.

The 1995 Probe SE in Vibrant White. Some equipment shown may be optional.

FEATURES & OPTIONS

REFERRED EQUIPMENT PACKAGES

	Probe 251A	SE 253A	GT 261A	GT 263A
AM/FM stereo radio with cassette, digital clock	P	-	-	-
Premium sound audio system with AM/FM stereo radio with cassette, digital clock and power antenna	-	P	P	P
A/C-free air conditioning with tinted glass	P	P	P	P
Group 1: Rear window defroster; dual electric remote-control mirrors	O	P	P	P
Group 2: Tilt steering column; console with storage armrest and cupholder (standard with GT); interval wipers, remote fuel door and liftgate releases; speed control	O	P	P	P
Group 3: Power side windows with driver and passenger "express-down" feature, power door locks and door map pockets	-	P	O	P
Group 4: Illuminated entry system, dual illuminated visor mirrors, remote keyless entry system, fade-to-off dome lamp with map lights; Convenience lights: door/liftgate ajar light, low fuel and low washer fluid lights, glove box light; battery saver; headlamp warning chime	-	O	O	P
SE Appearance Package Includes GT front fascia (without fog lamps), 15" aluminum wheels, P205/55R15 87S BSW tires, sport suspension, Sport Edition SE nomenclature	-	P	-	-
Color-keyed bodyside moldings	O	P	P	P
Front color-keyed floor mats	-	O	P	P
Rear wiper/washer	-	-	O	P
Power driver's seat	-	-	-	P
Rear spoiler (see your dealer for availability)	O	O	O	P
Anti-lock braking system (includes 4-wheel disc brakes on Probe and Probe SE)	O	O	O	P
EXTERIOR FEATURES				
Concealed halogen headlamps	S	S	S	S
Flush door handles	S	S	S	S
Wraparound quarter windows with concealed center and rear pillars and flush glass	S	S	S	S
Tinted rear window and quarter window glass	S	S	S	S
Functional root drip molding	S	S	S	S
Lower bodyside cladding	-	-	S	S
Unique front and rear fascias	-	-	S	S
Rectangular fog lamps	-	-	S	S
Wheel covers and P195/65R14 88S BSW tires	S	-	-	-
15" aluminum wheels and P205/55R15 BSW tires (includes sport suspension)	O	P	-	-
16" 5-spoke directional aluminum wheels and P225/50R16 91V BSW performance tires	-	-	S	S
15" 5-spoke chrome wheels and P225/50R16 91V BSW performance tires	-	-	O	O
Front license plate bracket	O	O	O	O
SAFETY AND SECURITY				
Driver and front passenger air bags	S	S	S	S
Point lap/shoulder safety belts front and rear; Child rear seat tether anchor	S	S	S	S
Anti-theft system	-	-	O	O

SEATING

	Probe 251A	SE 253A	GT 261A	GT 263A
Cloth bucket seats with integral headrests; recliners with "memory" feature	S	S	-	-
GT cloth bucket seats with driver-side power lumbar support and seat back side bolsters	-	-	S	S
Leather seating surfaces on front bucket seats only	-	-	-	O
50/50 fold-down rear seats	S	S	S	S

COMFORT AND CONVENIENCE

	Probe 251A	SE 253A	GT 261A	GT 263A
Electronic 4-speed automatic transaxle	O	O	O*	O*
Power sliding roof (includes dome lamp/map lights)	O	O	O	O
Cargo compartment light	S	S	S	S
Cargo area net	-	-	S	S
Performance instrument cluster with tachometer, fuel gauge, water temperature gauge, oil pressure gauge, voltmeter and trip odometer	S	S	S	S
Urethane soft-feel steering wheel	S	S	-	-
Leather-wrapped steering wheel	-	-	S	S
Leather shift knob (manual transaxle)	-	-	S	S
Full console with armrest and cupholders	O†	P	S	S
Door trim panels with integral armrests	S	S	S	S
Side window demisters	S	S	S	S
Engine block heater	O	O	O	O

SOUND SYSTEMS

	Probe 251A	SE 253A	GT 261A	GT 263A
Electronic AM/FM stereo radio, digital clock, 4 speakers	S	S	S	S
Premium sound audio system with AM/FM compact disc radio, digital clock, subwoofer speaker and power antenna	O	O	O	O

O = Optional feature S = Standard feature P = Part of Preferred Equipment Package
*Included in Group 2. †Requires anti-lock brakes.

PRODUCT CHANGES

Following publication of the catalog, certain changes in standard equipment, options, prices and the like, or product delays, may have occurred which would not be included in these pages. Your Ford Dealer is your best source for up-to-date information.
Ford Division reserves the right to change product specifications at any time without incurring obligations.

Left to right: 14" wheel covers (standard on Probe); 16" 5-spoke directional aluminum wheels (standard on GT); 15" aluminum wheels (included in SE Preferred Equipment Package, optional on Probe); 16" 5-spoke chrome wheels (optional on GT).



Engine, Probe and Probe SE

Type	I-4
Valves	16, DOHC
Displacement	2.0L (122 cu. in.)
Horsepower (SAE net)	118 @ 5,500 rpm
Torque (SAE net lbs.-ft.)	127 @ 4,500 rpm
Fuel system	Multi-port electronic fuel injection

Engine, Probe GT

Type	V-6
Valves	24, DOHC
Displacement	2.5L (153 cu. in.)
Horsepower (SAE net)	164 @ 5,600 rpm
Torque (SAE net lbs.-ft.)	160 @ 4,800 rpm
Fuel system	Multi-port electronic fuel injection

Transaxle

Type	5-speed manual overdrive (std.) Electronic 4-speed automatic (opt.)
------	------------------------------------------------------------------------

Body/Chassis

Drivetrain type	Front-wheel drive
Body type	Unitized with separate front subframe
Front suspension	Independent MacPherson struts with stabilizer bar (unique sport handling components in GT)
Rear suspension	Independent MacPherson struts with stabilizer bar (unique sport handling components in GT)

Body/Chassis, cont'd

Steering	Power rack-and-pinion, 17:1 overall ratio
Brakes	Power front disc/rear drum Power 4-wheel disc (GT) anti-lock system optional (includes 4-wheel disc brakes on Probe, SE)
Tires	P195/65R14 88S BSW all-season P225/50R16 91V BSW performance (GT)
Fuel capacity	15.5 gallons

Dimensions

	2-Door
Wheelbase	102.8"
Length	178.7 ⁽¹⁾
Height	51.6"
Width	69.8"
Front tread	59.8 ⁽²⁾
Rear tread	59.8 ⁽²⁾
Front head room	37.8"
Rear head room	34.8"
Front leg room	43.1"
Rear leg room	28.5"
Front shoulder room	52.0"
Rear shoulder room	53.9"
Cargo volume (cu. ft.)	18 ⁽³⁾
Passenger capacity	4

(1) 179.5" with SE and GT. (2) 59.4" with SE and GT. (3) With rear seat backs up.





Printed on recycled paper
10% post-consumer waste

