

PLYMOUTH



LASER

PATTERSON - CHRYSLER - PLYMOUTH
JEEP - EAGLE
1965 N. Ellsworth Ave.
Salem, Ohio 44460
216-337-3475

THE PLYMOUTH ADVANTAGE: PERFORMANCE ENGINEERING. THE 1992 LASERS CONTINUE THE PLYMOUTH TRADITION OF INNOVATION. LASER COMBINES POWER, SPORTINESS AND SAFETY FEATURES AT A PRICE THAT'S ABSOLUTELY IRRESISTIBLE. THE NEWLY REFINED AERODYNAMIC SHAPE IS SLEEK AND FUTURISTIC. UNDER THE HOOD BEATS THE PURE POWER OF AN AVAILABLE 2.0-LITER DOHC (DUAL OVER-HEAD CAM) 16-VALVE INTER-COOLED TURBOCHARGED MPI (MULTIPOINT FUEL INJECTION) ENGINE. STOPPING STABILITY ON SLIPPERY SURFACES IS GREATLY IMPROVED BY OPTIONAL ANTILOCK BRAKES. A NEW RS TURBO ALL-WHEEL-DRIVE MODEL WITH DOUBLE WISHBONE REAR SUSPENSION DELIVERS GREATER HANDLING AND PERFORMANCE. A WEALTH OF SAFETY FEATURES, DESCRIBED THROUGHOUT THIS BOOK, OFFER INCREASED SECURITY FOR DRIVER AND PASSENGERS. WHETHER YOU CHOOSE THE RS TURBO AWD, RS TURBO, RS OR BASE MODEL, PLYMOUTH LASER OWNS THE ROAD. YOU CAN TOO. ADVANTAGE: PLYMOUTH.



Laser RS Turbo AWD

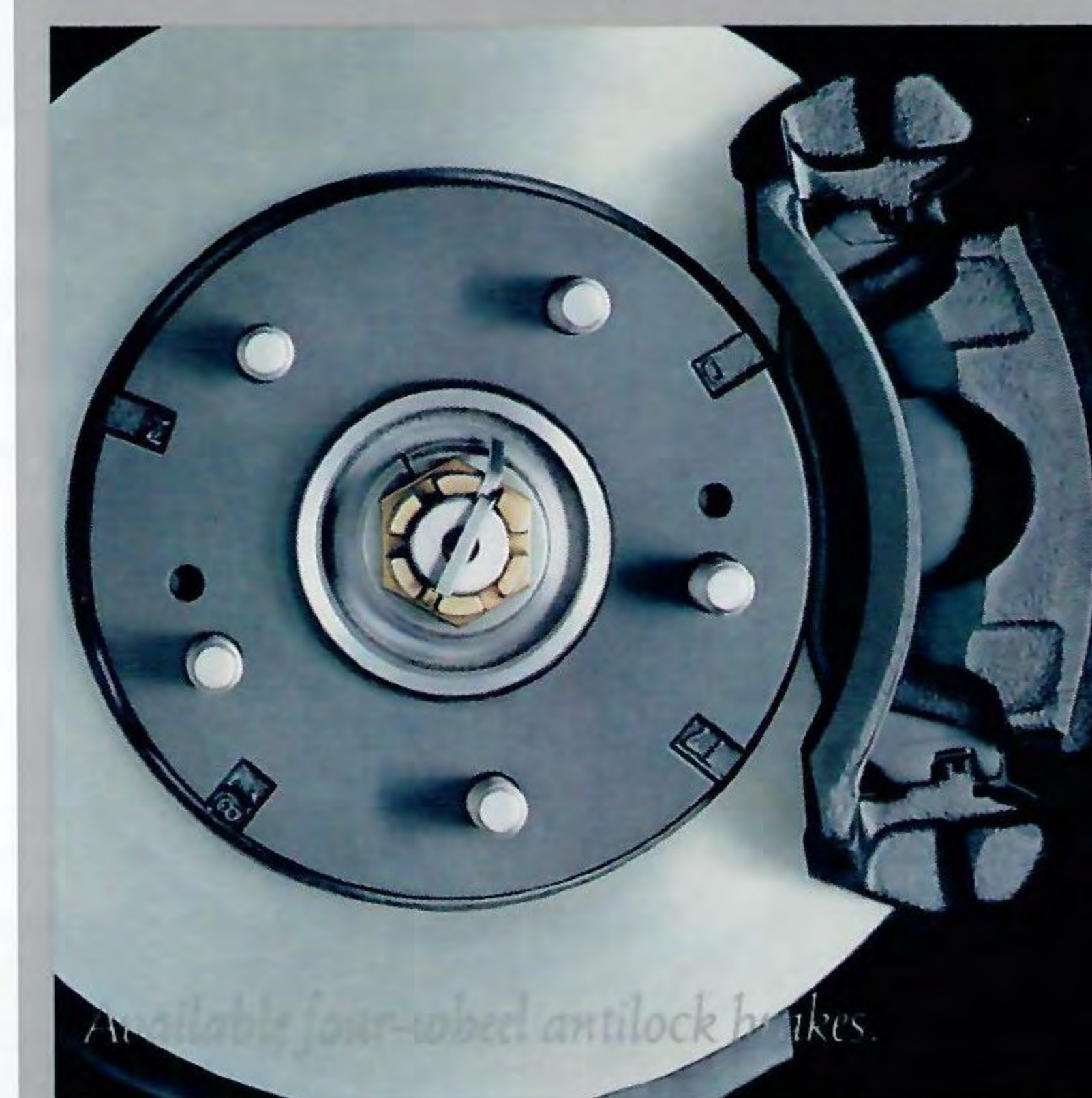


Laser RS



Laser

ADVANTAGE: SAFETY



Available four-wheel antilock brakes.



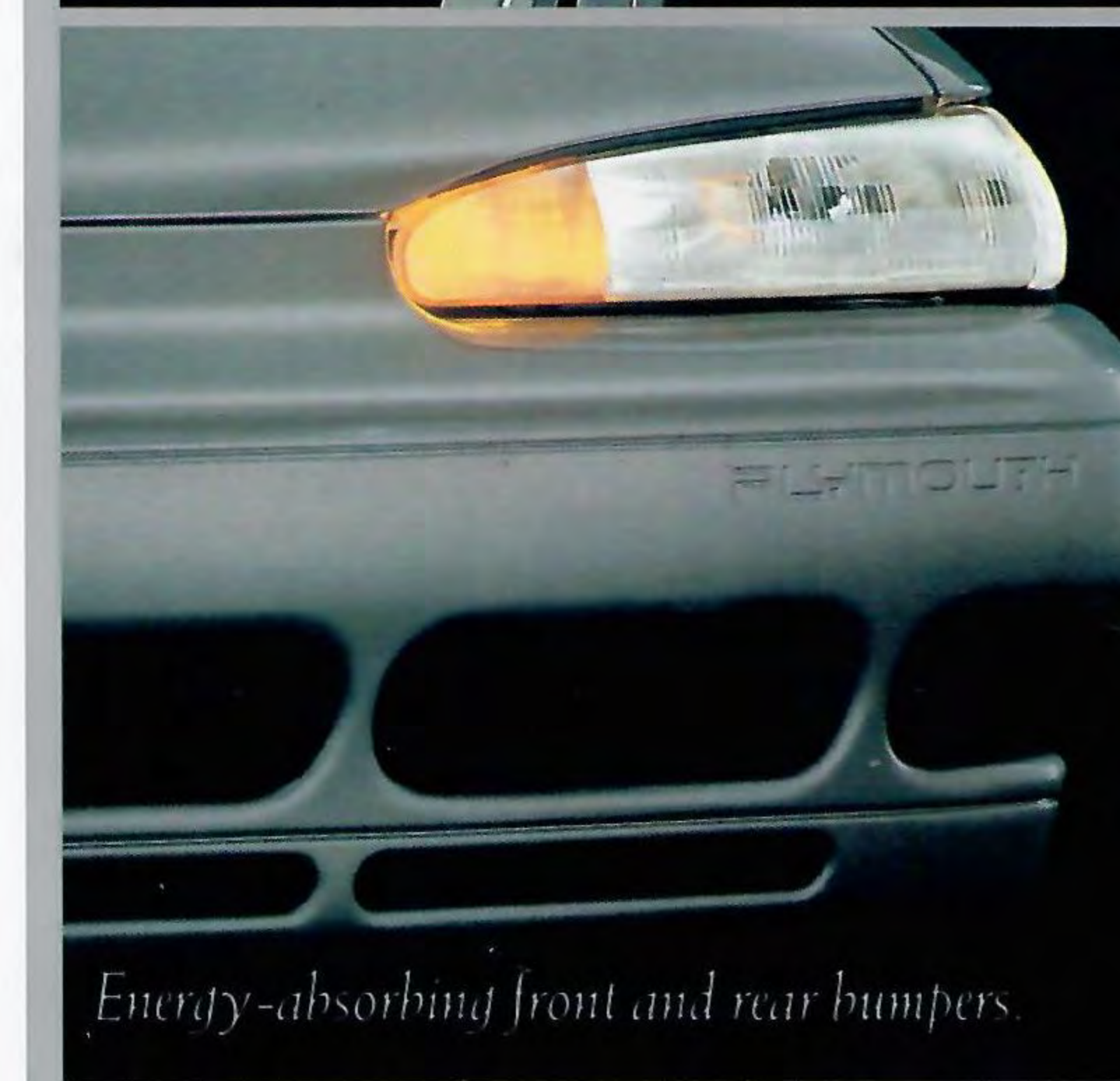
Standard front motorized passive restraint system with manual active lap belts.



Available dealer-installed security alarm system.

ALL WHEEL DRIVE

New All-Wheel-Drive availability.



Energy-absorbing front and rear bumpers.



*Available portable handheld cellular telephone.**

*See page 19 for additional information.



Laser RS Turbo, winner of *Car & Driver's* "10 Best" award three years in a row. (Jan. 1989, 1990 and 1991 issues.)



New styling refinements give Laser a smooth, sleek, sophisticated look. The new Laser RS Turbo AWD model distributes engine forces evenly to all four wheels for improved handling, acceleration and stability.



Optional flip-up/removable sunroof includes air deflector, sunshade and vinyl protective storage bag with cargo compartment tie-down straps.



Available liftgate wiper/washer keeps your rear window clean for better visibility.

SERIOUS FUN



Some of the equipment shown or described throughout this catalog is available at extra cost.

About this catalog. Since the time of printing, some of the information you'll find in this catalog may have been updated. Ask your dealer for details.

Plymouth Laser RS Turbo AWD, shown in Radiant Red Clear Coat.



Four-wheel antilock brakes help prevent wheel lockup. (Available on Laser RS, RS Turbo, and RS Turbo AWD.)



New Laser RS Turbo AWD model features a rear double wishbone design for superior handling and stability.



Four valves per cylinder offer high output and smooth performance on Laser RS, RS Turbo, and RS Turbo AWD.

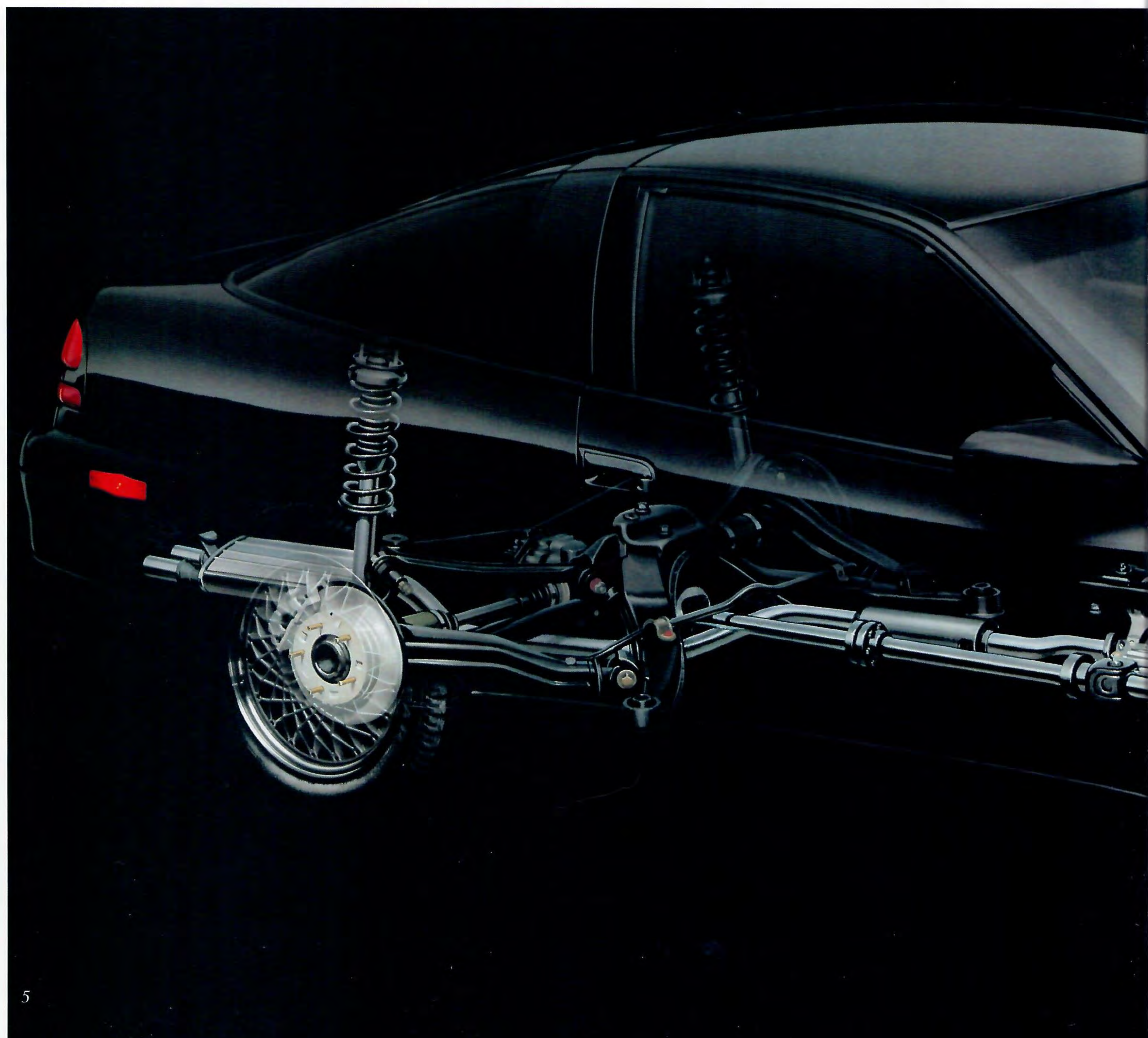


Laser's contemporary and aerodynamic shape has earned an impressive drag coefficient of 0.33. A new rear spoiler (available February 1992) is standard on Laser RS Turbo and RS Turbo AWD models.

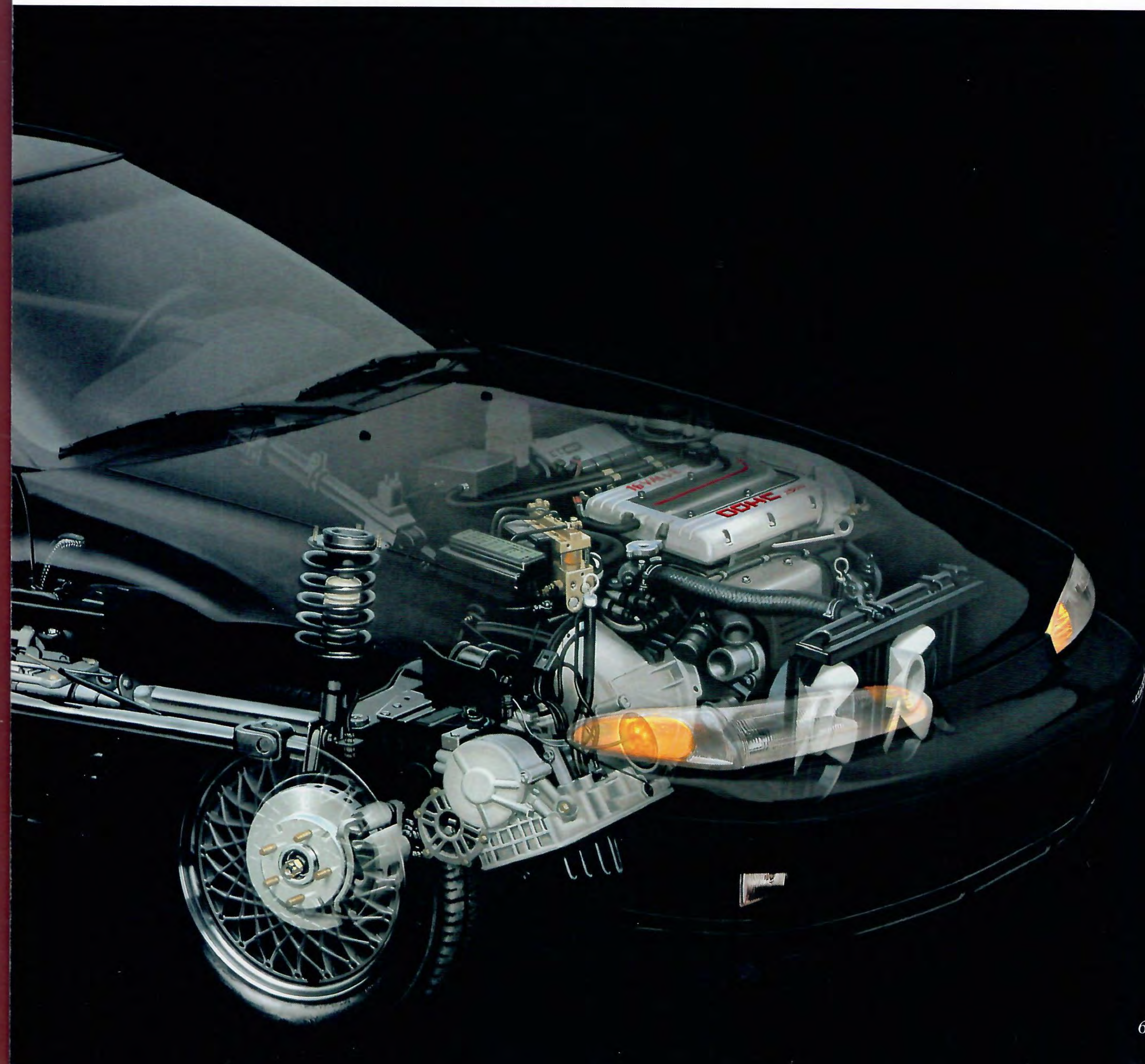


To ensure consistent high quality, Laser's advanced manufacturing process uses over 470 robots.

SUPERB PERFORMANCE



ADVANTAGE: PLYMOUTH





Convenient driver-side map pocket. (Available on Laser RS, RS Turbo, and RS Turbo AWD with power windows.)



Premium AM stereo*/FM stereo radio/cassette player with seven-band equalizer, and more. (See page 17 for package availability.)



Front motorized passive restraints with manual active lap belts and rear lap/shoulder belts hold occupants safely.



LASER RS TURBO'S COCKPIT DELIVERS CONFIDENT CONTROL. THE INTERIOR WELCOMES YOU WITH CLOTH HIGH-BACK BUCKET SEATS (SHOWN RIGHT IN DARK AGATE) AND ADJUSTABLE DRIVER-SIDE LUMBAR SUPPORT. INCLUDES LEATHER-WRAPPED SPORT STEERING WHEEL, AVAILABLE AM STEREO*/FM STEREO RADIO/CASSETTE PLAYER WITH COMPACT DISC PLAYER, AND MORE. ADVANTAGE: PLYMOUTH.

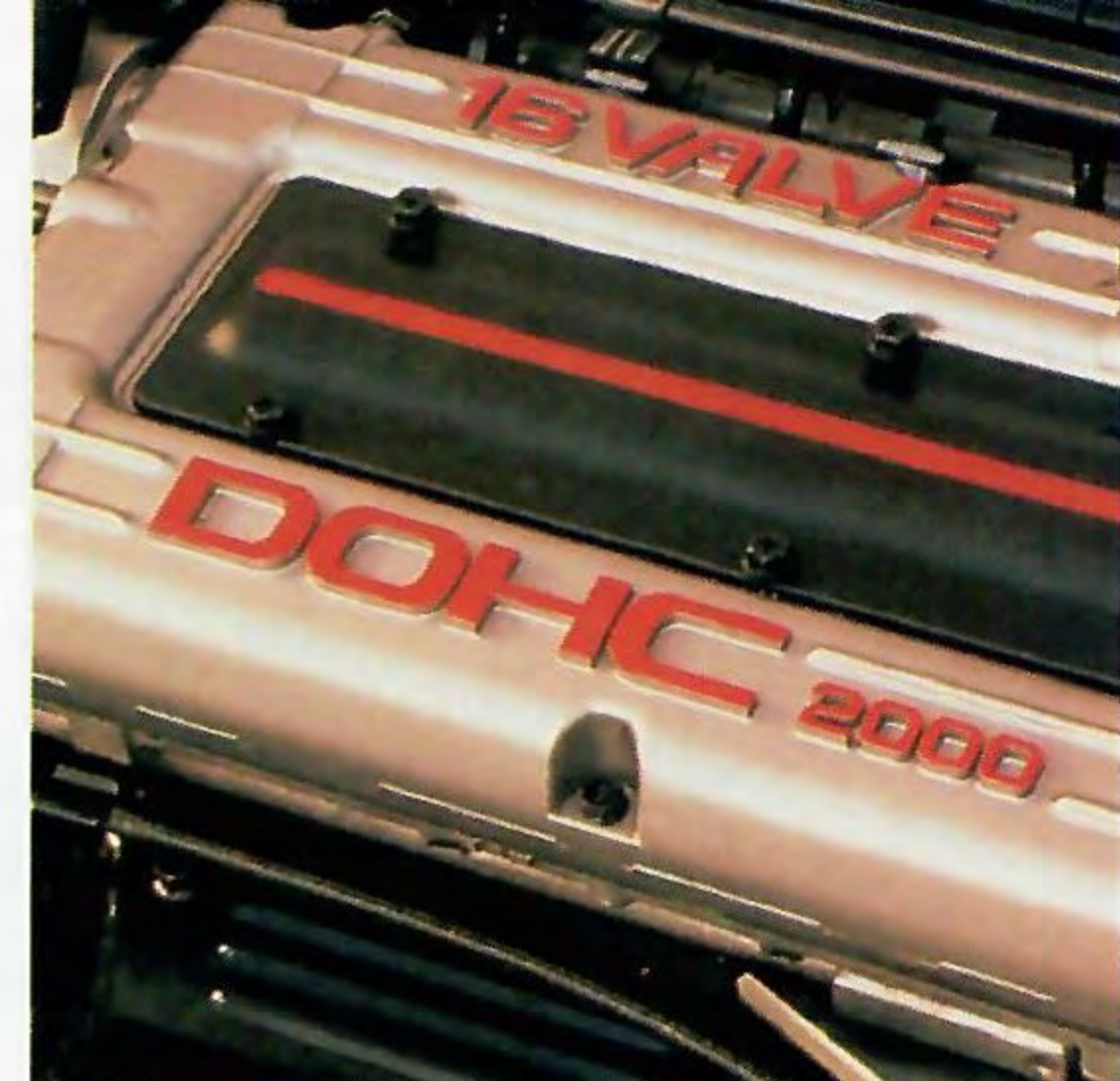
INSIDE MOVES



*Some AM stereo broadcasting may not be compatible with this radio.



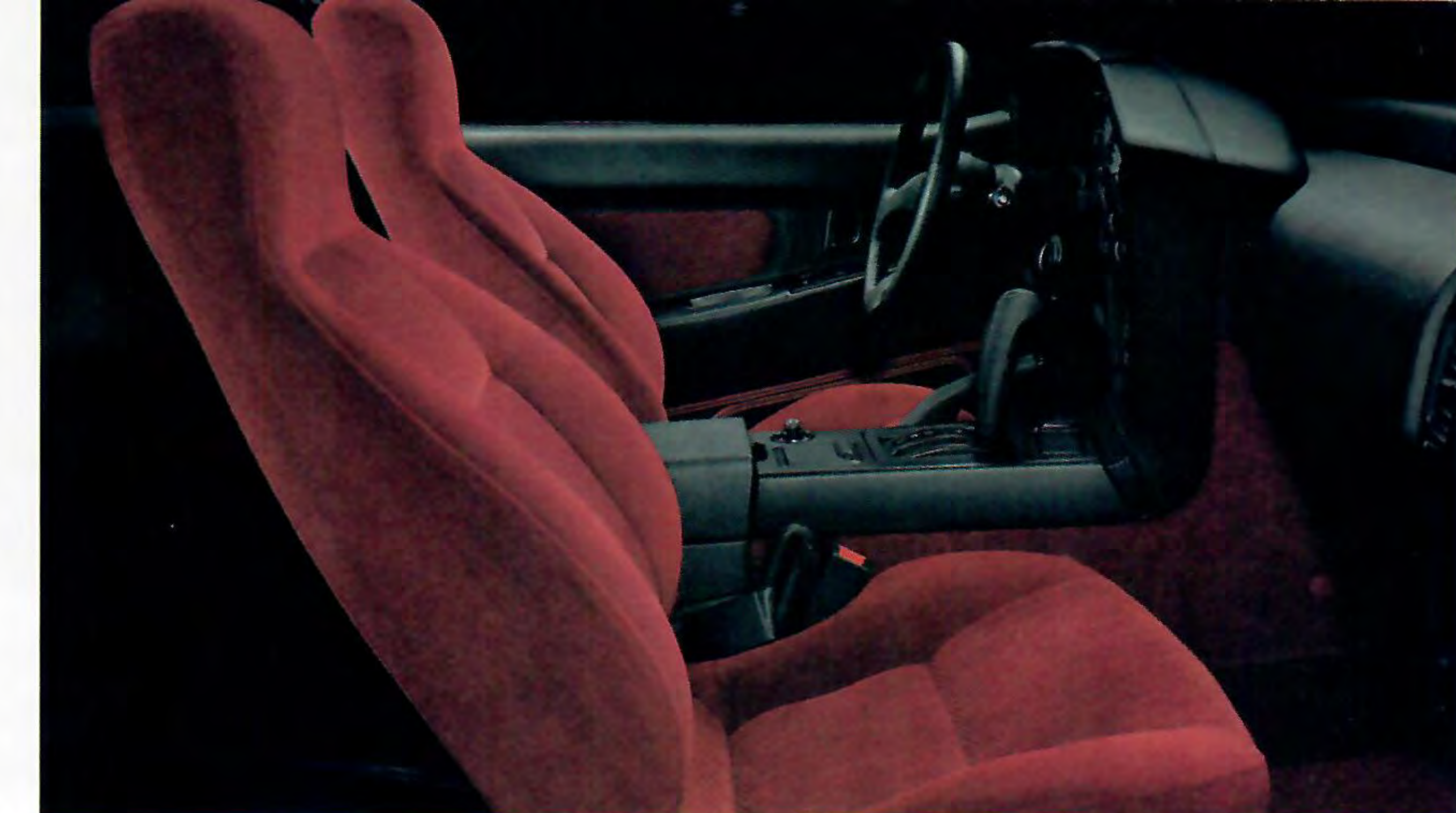
Laser RS Turbo attains 0-60 mph in just 6.8 seconds. (Independent USAC tests conducted February 1991.)



2.0-liter DOHC 16-valve inter-cooled turbocharged MPI engine delivers 190 horsepower with five-speed manual transaxle.



New "high-performance" five-speed manual overdrive transaxle. (Standard on Laser RS Turbo and RS Turbo AWD.)



PLYMOUTH LASER RS TURBO PERFORMANCE TECHNOLOGY INCLUDES DUAL OVERHEAD CAMS AND FOUR VALVES PER CYLINDER FOR OUTSTANDING SMOOTHNESS, EFFICIENCY AND POWER. PERFORMANCE-TUNED FRONT INDEPENDENT MACPHERSON-TYPE STRUTS COUPLED WITH TRAILING BEAM REAR SUSPENSION LET YOU MANEUVER THROUGH TURNS WITH PRECISE CONTROL. ADVANTAGE: PLYMOUTH. NEW FOR 1992, THE EYE-CATCHING CRIMSON RED INTERIOR (SHOWN ABOVE).

THINK FAST



Plymouth Laser RS Turbo, with new standard rear spoiler*, shown in Bright White Clear Coat. *Available February 1992.



Security alarm option provides a pocket-size remote door lock/unlock, panic button, and more. (Dealer-installed.)



Available four-speed automatic transaxle includes safety interlock feature. (Not available on Laser RS Turbo AWD.)



Split fold-down rear seats offer versatility and over 25 cubic feet of room when down. (Laser RS Turbo AWD, 22.4 cubic feet.)

POWER PLAY

NONSTOP ADVENTURE. PLYMOUTH LASER RS GIVES DRIVING ENTHUSIASTS AN AGGRESSIVE 2.0-LITER DOHC 16-VALVE MPI ENGINE, RACK-AND-PINION STEERING, FULL CENTER CONSOLE AND MORE. THE BASE LASER (SHOWN RIGHT) OFFERS A RESPONSIVE 1.8-LITER SOHC (SINGLE OVERHEAD CAM) MPI ENGINE AND FOUR-WHEEL DISC BRAKES. ALL LASERS HAVE A STANDARD STAINLESS STEEL EXHAUST SYSTEM FOR DURABILITY AND LONG LIFE. ADVANTAGE: PLYMOUTH.



Plymouth Laser RS, shown in Electric Blue Metallic Clear Coat.

SAFETY FEATURES

- Antitheft trunk lock and door lock inner guards
- Backup lights
- Brake fluid pressure loss warning light (also serves as indicator when parking brake is applied)
- Double ball-joint rearview mirror mount
- Dual braking system with separate brake fluid reservoirs in the master cylinder
- Dual outside rearview mirrors
- Electric windshield washers
- Energy-absorbing front and rear bumpers
- Energy-absorbing front seatbacks
- Energy-absorbing instrument panel and sun visors
- Energy-absorbing steering column
- Fade-resistant four-wheel disc brakes
- "Flash-to-Pass" optical horn
- Front seat head restraints
- Glare reduction measures for instrument panel, steering wheel, and windshield wipers
- Hazard warning flasher system
- Ignition and steering column lock
- Impact-actuated fuel supply shutdown relay
- Inside rearview mirror
- Interlocking door latches with driver manual override feature
- Key-left-in-ignition reminder
- Non-override passenger door lock
- Recessed inside door release handles
- Reinforced windshield header and roof
- Remote hatch release
- Resilient window crank knobs
- Safety-Rim wheels
- Seat belt reminder system
- Seatback latches on folding front seats
- Shatter-resistant glass
- Side door beams
- Side marker lights and reflectors
- Turn signals with lane-change feature
- Two-point motorized passive restraint system with color-keyed lap belt on driver and front passenger seats; three-point shoulder/lap belts for rear outboard passenger seats

COLORS

EXTERIOR	INTERIOR
Medium Quartz Metallic	Dark Agate Medium Quartz
Light Spectrum Blue Metallic	Dark Agate
Electric Blue Metallic	Dark Agate Medium Quartz
Bright White	Dark Agate Medium Quartz Crimson Red
Medium Red	Medium Quartz Crimson Red
Black	Dark Agate Medium Quartz
Radiant Red	Dark Agate Medium Quartz
Turquoise Metallic	Dark Agate Medium Quartz

Note: Clear Coat finish is standard on every 1992 Plymouth Laser.

SCHEDULED MAINTENANCE

Here is a partial list of Plymouth Laser's standard scheduled maintenance items (Turbo engine may vary). The complete list can be found in the Owner's Manual.

Laser with standard 1.8-liter engine.

Engine oil and filter change 7,500 miles or 12 months

Spark plug change each 30,000 miles

Air filter replacement each 30,000 miles

Engine coolant replacement each 30,000 miles or 2 years

For severe service maintenance schedule, refer to Owner's Manual.

MILEAGE*

23 EPA est. city mpg, 32 EPA est. hwy. mpg

*Mileage figures based on 1991 Laser base model with standard engine and 5-speed manual overdrive transaxle.

EXTERIOR COLORS



Medium Quartz Metallic



Light Spectrum Blue Metallic



Electric Blue Metallic



Bright White



Medium Red



Black



Radiant Red



Turquoise Metallic

NOTE: Due to printing limitations, the colors shown will vary slightly from actual hues. See your dealer for accurate color chips.

Chrysler Corporation Limited Warranty Protection

Every Chrysler Corporation vehicle comes with the protection of a Chrysler Corporation Limited Warranty. See your dealer for details.



MOPAR parts are engineered by Chrysler Corporation for use in your new Plymouth Laser. When replacement is necessary, be sure to specify MOPAR parts. Used by professional automotive technicians worldwide.

Chrysler Cellular Systems OKI® Telecom manufactures, services and is the warrantor of the Visorphone®, and Portable phone products that are available on selected Chrysler Corporation vehicles. See your dealer for a copy of the limited warranties. Restrictions apply.

®Visorphone is a registered trademark of Cartell, Inc.

Consider Leasing More consumers are considering leasing as an alternative to buying. Leasing a new Plymouth Laser usually involves a small security deposit and a first month's lease payment. Monthly payments frequently are less than financing a new car purchase. Ask your dealer for details.



Chrysler Credit Financing Chrysler Credit offers a variety of finance programs that can help make your new Plymouth Laser even more affordable. These flexible finance and lease programs can be tailored to suit your budget and your lifestyle. They include Advantage: Gold Key Lease, Gold Key Plus, College Graduate Plans, Retail Financing, and other special payment plans. Ask your salesperson for details.

Chrysler Purchase Assistance Program for the Physically Challenged

Cash reimbursements of up to \$500 are available for qualified adaptive driving devices on 1992 Chrysler Corporation cars and trucks. For further information, contact your dealer or the PHYSICALLY CHALLENGED RESOURCE CENTER at 1-800-255-9877.

All product illustrations and specifications are based upon current information at the time of publication approval. Although descriptions are believed correct, complete accuracy cannot be guaranteed. Chrysler Corporation reserves the right to make changes from time to time, without notice or obligation, in prices, specifications, colors and materials, and to change or discontinue models. See your dealer for the latest information.

Plymouth and MOPAR are registered trademarks, and Laser is a trademark of Chrysler Corporation.

Buckle up for safety.



ADVANTAGE: PLYMOUTH



The New Site For Car Brochures
DEZO'S GARAGE

